

CONTENDER

STEP UP TO THE PLATE



CONTENDER 400MM BASKET GLASSWASHER

DMG010

CONTENTS

I. GENERAL INFORMATION	3
2. PRODUCT DESCRIPTION	3
3. TECHNICAL INFORMATION	3
4. TRANSPORTATION =	4
5. UNPACKING	4
6. INSTALLATION	4
7. SAFETY INSTRUCTIONS	4
8. OPERATION	5
9. CLEANING & MAINTENANCE	5
10. TROUBLESHOOTING	6
II. SPARE PART LIST-EXPLODING DRAWING	7
12. ELECTRICAL CIRCUIT	10

GENERAL INFORMATION

BEFORE INSTALLING THE APPLIANCE, READ OPERATION AND MAINTENANCE INSTRUCTIONS CAREFULLY. WRONG INSTALLATION AND PART CHANGING MAY DAMAGE THE PRODUCT OR MAY CAUSE INJURY ON PEOPLE. THESE ARE NOT IN OUR COMPANY'S RESPONSIBILITY TO DAMAGE THE APPLIANCE INTENTIONALLY, NEGLIGENCE, DETRIMENTS BECAUSE OF DISOBEYING INSTRUCTIONS AND REGULATIONS, WRONG CONNECTIONS. UNAUTHORIZED INTERVENTION TO APPLIANCE INVALIDATES THE WARRANTY.

1. THIS INSTRUCTION MANUAL SHOULD BE KEPT IN A SAFE PLACE FOR FUTURE REFERENCE.
2. INSTALLATION SHOULD BE MADE IN ACCORDANCE WITH ORDINANCES AND SECURITY RULES OF THAT COUNTRY BY A QUALIFIED SERVICE PERSONNEL.
3. THIS APPLIANCE HAS TO BE USED BY TRAINED PERSON.
4. PLEASE TURN OFF THE APPLIANCE IMMEDIATELY IN THE EVENT OF MALFUNCTION OR FAILURE. THE APPLIANCE SHOULD BE REPAIRED ONLY BY AUTHORIZED SERVICE PERSONNEL. PLEASE DEMAND ORIGINAL SPARE PART.

PRODUCT DESCRIPTION

*THE PROFESSIONAL UNDERCOUNTER TYPE DISHWASHER, THAT PROVIDES HIGH EFFICIENCY HAS BEEN DESIGNED TO BE USED IN INDUSTRIAL KITCHENS.

PRODUCT CODE	DIMENSIONS (MM)	WEIGHT (KG)	PACKAGING DIMENSIONS (MM)
DMGOIO	480 X 580 X 720	43	500 X 630 X 870

TECHNICAL INFORMATION

CAPACITY (GLASS / HOUR)	1000
BASKET DIMENSION (MM)	400 X 400
TOTAL POWER (KW)	3.2
OPERATING VOLTAGE (V)	220
WATER PRESSURE (BAR)	2-4
WASHING TANK POWER (KW)	2.5
PROGRAM TIME (MIN)	3
CABLE (MM ²)	3X2.5
FUSE (A)	25

TRANSPORTATION

THIS APPLIANCE CAN NOT BE MOVED BY HAND FROM AREA TO AREA.IT MUST BE MOVED ON PALLET WITH FORKLIFT TRUCK.

UNPACKING

PLEASE UNPACK THE PACKAGE ACCORDING TO THE SECURITY CODES AND ORDINANCES OF CURRENT COUNTRY AND GET RID FROM THE PACK. PARTS WHICH CONTACTS WITH FOOD ARE PRODUCED BY STAINLESS STEEL.ALL PLASTIC PARTS ARE MARKED BY MATERIAL'S SYMBOL.

PLEASE CHECK THAT ALL THE PARTS OF APPLIANCE HAD COME COMPLETELY AND IF THEY ARE DAMAGED OR NOT DURING THE SHIPPIN.

INSTALLATION

PLEASE PLACE THE PRODUCT TO STRAIGHT AND STURDY GROUND,PLEASE TAKE NECESSARY STEPS AGAINST POSSIBILITY OF OVERTURN.

TECHNICIAN WHO WILL SERVE FOR INSTALLATION AND SERVICE FOR THE APPLIANCE MUST BE PROFESSIONAL ON THIS SUBJECT AND MUST HAVE INSTALLATION AND SERVICE LICENSES.

CONNECTION TO ELECTRIC POWER SUPPLY MUST BE DONE BY AUTHORIZED PERSON.

PLEASE BE SURE THAT THE VOLTAGE CONNECTED TO APPLIANCE MUST BE EQUAL WITH THE VOLTAGE WHICH IS ON APPLIANCE'S LABEL.

THIS APPLIANCE MUST BE CONNECTED TO AN EARTHED OUTLET IN ACCORDANCE WITH SAFETY RULES AND STANDARDS. APPLIANCE'S EARTHING MUST BE CONNECTED TO EARTHING LINE ON PANEL WHICH IS NEAREST TO ELECTRIC INSTALLATION. CONNECTION TO THE MAIN FUSE AND LEAK CURRENT FUSE MUST BE DONE IN ACCORDANCE WITH THE CURRENT REGULATIONS.

SAFETY INSTRUCTIONS

DO NOT USE THE APPLIANCE IN INSUFFICIENT LIGHTED PLACE.

DO NOT TOUCH THE MOVING ATTACHMENTS WHILE THE APPLIANCE OPERATES.

DO NOT INSTALL THE APPLIANCE IN THE PRESENCE OF FLAMMABLE OR EXPLOSIVE MATERIALS.

DO NOT OPERATE THE APPLIANCE WHEN THE MACHINE IS EMPTY.

DO NOT LOAD SO LESS OR MORE THAN APPLIANCE'S CAPACITY.

DO NOT ATTEMPT TO USE THE APPLIANCE WITHOUT SUITABLE PROTECTIVE EQUIPMENTS.

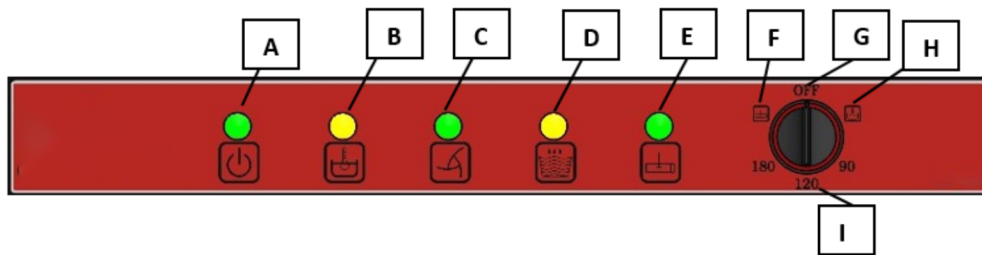
BECAUSE OF ANY REASON IF THERE IS A FIRE OR FLAME FLARE WHERE THE APPLIANCE IS USED,TURN OFF ALL GAS VALVES AND ELECTRIC CONTACTOR SWITCH QUICKLY AND USE FIRE EXTINGUISHER .NEVER USE WATER TO EXTINGUISH THE FIRE.

ALL THE DAMAGES BECAUSE OF NOT HAVING EARTHING CONNECTION WILL NOT BE ON WARRANTY.

DO NOT WASH THE DECORATED DISHES.PREVENT SILVER WARES TO CONTACT WITH THE OTHER METALS.

OPERATION

CONTROL PANEL



A : Appliance ON lamp
B : Water heated lamp
C : Washing lamp
D : Water getting /rinsing
E : Evacuation lamp

F : Evacuation position
G : Appliance OFF position
H : Water inlet
I : Washing program

OPERATING;

- CHANGE THE WATER THAT IS IN WATER TANK 3 TIMES IN A DAY.
- BEFORE PUTTING THE GLASSES IN TO THE APPLIANCE,MAKE PREWASH WITH COLD OR WARM WATER WITHOUT USING ANY DETERGENT.
- TURN ON WATER SOURCE VALVE.
- PLUG IN THE APPLIANCE.
- IN ORDER TO TAKE OFF ANY RESIDUE THAT REMAIN IN STORAGE OR PIPES,OPERATE THE APPLIANCE WHEN IT IS EMPTY.
- IN ORDER TO OPERATE THE APPLIANCE SWITCH TO 'WATER INLET' POSITION. WATER INLET LAMP SIGNALS.IT MEANS POWER IS GIVEN TO GLASSWASHER,WATER IS GIVEN AND HEATED.
- WHEN HEATING PROCESS COMPLETED, WATER HEATED LAMP SIGNALS.
- OPEN THE APPLIANCE'S LID AND PUT ENOUGH DETERGENT INTO THE STORAGE.
- PLACE THE DIRTY GLASSES TO THE BASKETS.
- CLOSE THE LID AND SWITCH TO WASHING PROGRAM.INVOLVED INDICATOR LAMP SIGNALS AND WASHING PROCESS STARTS.
- WASHING PROCESS; FOR HOT WATER AND WASHING WITH DETERGENT (MINIMUM 55°C) ,FOR RINSING WITH HOT WATER (MINIMUM 75°C).
- IN ORDER TO STOP WASHING,OPEN THE LID WHEN IT IS AT 'WASHING' POSITION.
- IN ORDER TO GO ON WASHING, CLOSE THE LID WHEN IT IS AT 'WASHING' POSITION.
- THE APPLIANCE'S INDICATOR LAMP SIGNALS TO COMPLETE WASHING PROCESS.OPEN THE LID AND TAKE OFF THE BASKET THAT INCLUDES WASHED GLASSES.

CLEANING & MAINTENANCE

CLEANING AND MAINTENANCE AFTER EVERY USE

- ALWAYS TURN OFF THE APPLIANCE AND DISCONNECT FROM THE POWER SUPPLY BEFORE CLEANING.
- CLEAN ALL SURFACES OF THE APPLIANCE WITH HOT SOAPY WATER AFTER EVERY USE.RINSE AND DRY WITH A WET CLOTH.
- CLEAN THE CONTROL PANEL WITH SOFT MOISTY CLOTH,IF NECESSARY USE INEFFECTIVE DETERGENT.
- DO NOT USE ABRASIVE CLEANING CHEMICALS AS THESE CAN LEAVE HARMFUL RESIDUES.
- DO NOT CLEAN THE APPLIANCE BY SPRAYING WATER DIRECTLY,OTHERWISE ELECTRIC MOTOR MAY GET DAMAGED.

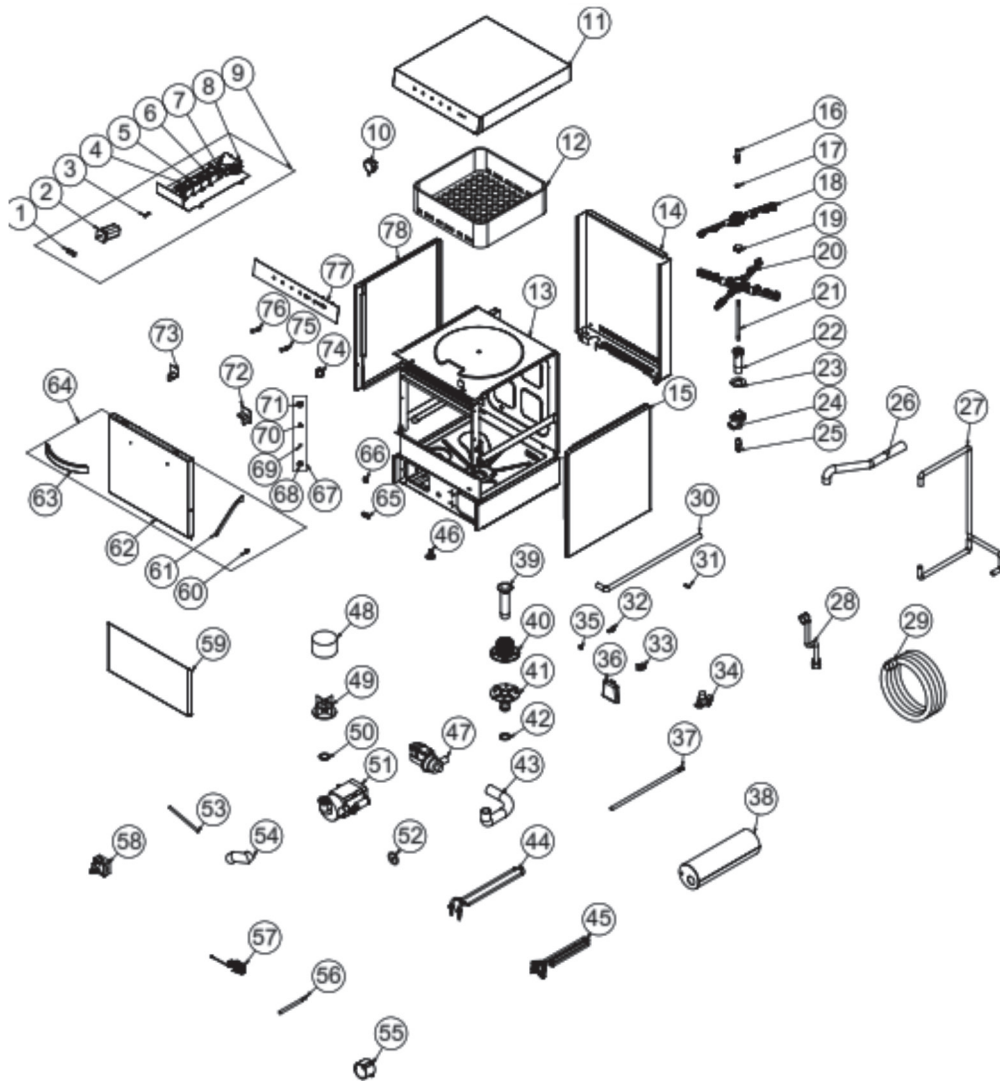
PERIODIC CLEANING AND MAINTENANCE

- MAINTENANCE SHOULD BE DONE BY QUALIFIED PERSON.
- CLEAN THE LIMES OF THE BURNER,INNER SURFACE OF THE WASHING TANK AND WATER PIPES ONCE OR TWICE IN A YEAR.
- CLEAN THE LIMES WITH USING RINSING AND WASHING NOZZLES ONCE IN A MONTH BY USING VINEGAR OR LIME REMOVER.
- CLEAN THE FILTERS IN THE APPLIANCE ONCE IN A WEEK.AFTER CLEANING BE SURE THAT THUMBSCREW IS COMPRESSED.
- CLEAN THE APPLIANCE'S FOUNTAINS ONCE IN 15 DAYS BY DETACHING IT.

TROUBLESHOOTING

<p>GLASSES ARE NOT WASHED WELL</p>	<ol style="list-style-type: none"> 1. CLEAN THE ABSORPTION FILTER IF IT IS DIRTY. 2. CHECK THE FOUNTAINS IF THEY ARE ACCUMULATED WITH RESIDUES OR NOT. 3. CHECK THE AMOUNT OF DETERGENT. 4. IF THE CHOSEN WASHING PROGRAM IS TOO LESS, REPEAT THE PROGRAM. 5. BE SURE THAT THE DISHES ARE PLACED CORRECTLY ON BASKETS.
<p>GLASSES ARE NOT DRIED WELL</p>	<ol style="list-style-type: none"> 1. IF THERE IS POLISHER OR NOT, IF NOT ADD SOME. 2. CHECK THE AMOUNT OF POLISHER.
<p>MIST OVER ON CUPS</p>	<ol style="list-style-type: none"> 1. AFTER WASHING PROCESS, TAKE THE CUPS FROM BASKETS.
<p>CORROSION ON CUPS</p>	<ol style="list-style-type: none"> 1. ONLY USE PRODUCTS THAT ARE NOT FOAMING FOR THE PROFESSIONAL DISHWASHERS.
<p>TOO MUCH FOAM AT STORAGE</p>	<ol style="list-style-type: none"> 1. CHECK THE AMOUNT OF DETERGENT . 2. IF FOAMING DETERGENT IS USED,POUR IT AND RINSE THE STORAGE TILL THE FOAMS ARE LOST. 3. DO NOT WASH WITH COLD WATER, WAIT FOR THE WARMED LAMP
<p>WASHING OR RINSING HANDLES ARE TURNING SLOWLY</p>	<ol style="list-style-type: none"> 1. TAKE OFF WASHING HANDLES AND CLEAN THEM. 2. CLEAN THE WASHING PUMP ABSORBING FILTER. 3. CHECK THE RINSE WATER PRESSURE
<p>VISCIDITY AND SPOTS ON CUPS</p>	<ol style="list-style-type: none"> 1. REDUCE THE AMOUNT OF POLISHER.
<ul style="list-style-type: none"> • IF DISHWASHING IS NOT DONE AT SUITABLE QUALITY • IF ANY FUNCTION OF SECURITY DOESN'T WORK <p>DO NOT USE THE APPLIANCE.</p>	

SPARE PART LIST-EXPLODING DRAWING

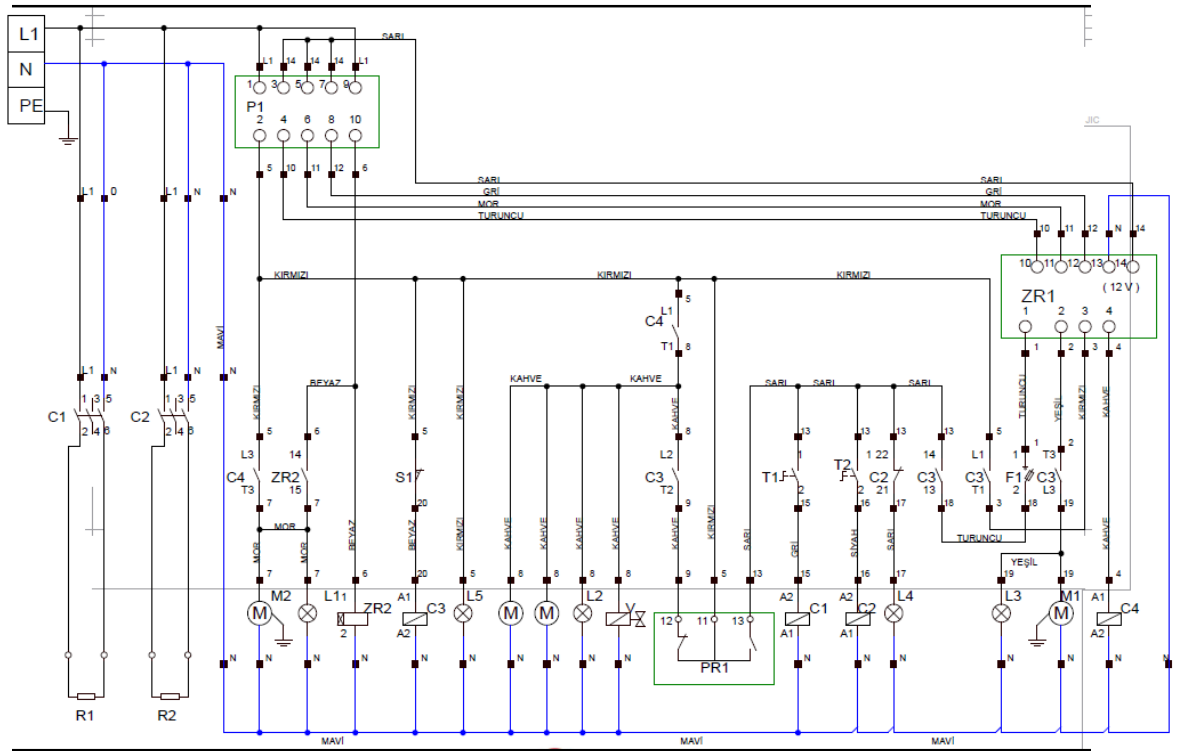


NO	PRODUCT NAME	
I	HORIZONTAL SENSOR	
2	SWITCH	
3	GLASS FUSE 5A	
4	LCIK090IM7 CONTACTOR	
5	CONTACTOR LCIK09IOM	
6	LCIKI2IOM7 CONTACTOR	
7	EVACUATION TIME RELAY	
8	WASH TIME RELAY	
9	ELECTRICAL PANEL GROUP	
10	PROCESTAT FLOAT	
II	TOP COVER SHEET	

12	BASKET	
13	CHASSIS	
14	BACK COVER SHEET	
15	LEFT SIDE SHEET	
16	SPINNING SPINDLE	
17	DETERGENT SEAL	
18	UPPER SPIN	
19	SPRAY SCREW	
20	BOTTOM SPIN	
21	SPRAY PIPE	
22	FOUNTAIN ARM	
23	SPRAY BOTTOM SHEET	
24	LOWER SPRAY ELBOW	
25	INLET FITTING	
26	VALVE HOSE	
27	RINSE HOSE	
28	HOSE 150CM	
29	WASTE WATER HOSE	
30	POLISHING PUMP HOSE	
31	RINSE PORT	
32	DETERGENT ENTRY PLASTIC	
33	AIR TRAP LOCATION	
34	VALVE (14 LT)	
35	DETERGENT SEAL	
36	AIR TRAP	
37	OUTPUT PIPE	
38	BOILER TANK	
39	DRAIN WEDGE	
40	FILTER COVER	
41	DISCHARGE WEDGE LOCATION	
42	FILTER GASKET	
43	BOILER HOSE	
44	TANK RESISTANCE 230V-2500W	
45	BOILER RESISTANCE-220V-2000W	
46	FOOT	
47	DRAIN PUMP	
48	FILTER	

49	FILTER LOCATION	
50	FILTER GASKET	
51	WASHING MOTOR	
52	ORING	
53	5/8 SILICONE HOSE	
54	WASHING PUMP HOSE	
55	RESISTANCE COVER	
56	THERMOSTAT PIPE	
57	THERMOSTAT 0-90°C	
58	POLISHING PUMP	
59	BOTTOM COVER SHEET	
60	SLEEVE PART	
61	TOP COVER HANDLE	
62	COVER OUTER SHEET	
63	COVER HANDLE	
64	COVER	
65	MAGNET LOCATION	
66	MAGNET	
67	COVER LOCK	
68	LOCK KIT SPRING PLACE	
69	BALL	
70	COVER LOCK SPRING	
71	LOCK BODY	
72	CORNER PLASTIC RIGHT	
73	CORNER PLASTIC LEFT	
74	SWITCH BUTTON	
75	GREEN WARNING LAMP	
76	YELLOW WARNING LAMP	
77	PANEL LABEL	
78	RIGHT SIDE SHEET	

ELECTRICAL CIRCUIT



PI	5 PROGRESSIVE COMMUTATOR
SI	MAGNETIC DOOR SENSOR
C1	BOİLER CONTACTOR 230V
C2	WASHİNG CONTACTOR 230V
C3	LİD CONTACTOR 230V
C4	RİNSİNG CONTACTOR 230V
PRI	PROSSESTAT
L1	START LAMP
L2	RİNSİNG LAMP
L3	WATER IS HEATED LAMP
L4	WASHİNG LAMP
L5	EVACUATION LAMP
ZR1	5 CYCLE- CYCLE RELAY (İTER RR-5TG)
ZR2	0-240 SEC. CYCLE RELAY
V	SOLENOID VALVE 230V
FI	ZR1 FUSE 500MA

T1	BOILER THERMOSTAT (30-90°C)
T2	WASHING THERMOSTAT (30-90°C)
M1	WASHING MOTOR 0,55 KW 230V
M2	EVACUATION MOTOR 0,44 W 230V
RI	BOILER RESISTANCE 3000W
R2	WASHING RESISTANCE 2500W
TRI	WASHING MOTOR SAFETY RELAY (4.2.A.)
TR2	EVACUATION HOSE SAFETY THERMIC (4.2.A.)
FI	LEAKAGE CURRENT SAFETY FUSE 32 A
M	DETERGENT PUMPS (220 V.)



STEP UP TO THE PLATE