

**CONTENDER**

**STEP UP TO THE PLATE**



**CONTENDER PRO500 UNDERCOUNTER DISHWASHER**

**DMB004**

# CONTENTS

I. GENERAL INFORMATION .....	3
2. PRODUCT DESCRIPTION .....	3
3. TECHNICAL INFORMATION .....	3
4. TRANSPORTATION ..... = .....	4
5. UNPACKING .....	4
6. INSTALLATION .....	4
7. SAFETY INSTRUCTIONS .....	4
8. OPERATION .....	5
9. CLEANING & MAINTENANCE .....	5
10. TROUBLESHOOTING .....	6
II. SPARE PART LIST-EXPLODING DRAWING .....	7
12. ELECTRICAL CIRCUIT .....	10

# GENERAL INFORMATION

BEFORE INSTALLING THE APPLIANCE, READ OPERATION AND MAINTENANCE INSTRUCTIONS CAREFULLY. WRONG INSTALLATION AND PART CHANGING MAY DAMAGE THE PRODUCT OR MAY CAUSE INJURY ON PEOPLE. THESE ARE NOT IN OUR COMPANY'S RESPONSIBILITY TO DAMAGE THE APPLIANCE INTENTIONALLY, NEGLIGENCE, DETRIMENTS BECAUSE OF DISOBEYING INSTRUCTIONS AND REGULATIONS, WRONG CONNECTIONS. UNAUTHORIZED INTERVENTION TO APPLIANCE INVALIDATES THE WARRANTY.

1. THIS INSTRUCTION MANUAL SHOULD BE KEPT IN A SAFE PLACE FOR FUTURE REFERENCE.
2. INSTALLATION SHOULD BE MADE IN ACCORDANCE WITH ORDINANCES AND SECURITY RULES OF THAT COUNTRY BY A QUALIFIED SERVICE PERSONNEL.
3. THIS APPLIANCE HAS TO BE USED BY TRAINED PERSON.
4. PLEASE TURN OFF THE APPLIANCE IMMEDIATELY IN THE EVENT OF MALFUNCTION OR FAILURE. THE APPLIANCE SHOULD BE REPAIRED ONLY BY AUTHORIZED SERVICE PERSONNEL. PLEASE DEMAND ORIGINAL SPARE PART.

# PRODUCT DESCRIPTION

\*THE PROFESSIONAL UNDERCOUNTER TYPE DISHWASHER ,THAT PROVIDES HIGH EFFICIENCY HAS BEEN DESIGNED TO BE USED IN INDUSTRIAL KITCHENS.

PRODUCT CODE	DIMENSIONS (MM)	WEIGHT (KG)	PACKAGING DIMENSIONS (MM)
DMB004	590 X 700 X 820	67	725 X 650 X 970

# TECHNICAL INFORMATION

CAPACITY (PLATE/ HOUR)	500
WATER CONSUMPTION (LT/PIECE.)	2,5
TOTAL POWER (KW)	3.55
MOTOR POWER (KW)	0,55
OPERATING VOLTAGE (V)	220-230
WATER PRESSURE ( BAR )	2-4
WASHING TANK POWER (KW)	2.5
RINSING TANK POWER (KW)	3
CABLE (MM <sup>2</sup> )	3X2.5
FUSE (A)	25
MAX.PLATE DIAMETER (Ø MM)	320
PROGRAM NUMBER (°C)	3

# TRANSPORTATION

**\*THIS APPLIANCE CAN NOT BE MOVED BY HAND FROM AREA TO AREA.IT MUST BE MOVED ON PALLET WITH FORKLIFT TRUCK.**

# UNPACKING

**PLEASE UNPACK THE PACKAGE ACCORDING TO THE SECURITY CODES AND ORDINANCES OF CURRENT COUNTRY AND GET RID FROM THE PACK. PARTS WHICH CONTACTS WITH FOOD ARE PRODUCED BY STAINLESS STEEL.ALL PLASTIC PARTS ARE MARKED BY MATERIAL'S SYMBOL.**

**PLEASE CHECK THAT ALL THE PARTS OF APPLIANCE HAD COME COMPLETELY AND IF THEY ARE DAMAGED OR NOT DURING THE SHIPPIN.**

# INSTALLATION

**PLEASE PLACE THE PRODUCT TO STRAIGHT AND STURDY GROUND,PLEASE TAKE NECESSARY STEPS AGAINST POSSIBILITY OF OVERTURN.**

**TECHNICIAN WHO WILL SERVE FOR INSTALLATION AND SERVICE FOR THE APPLIANCE MUST BE PROFESSIONAL ON THIS SUBJECT AND MUST HAVE INSTALLATION AND SERVICE LICENSES.**

**CONNECTION TO ELECTRIC POWER SUPPLY MUST BE DONE BY AUTHORIZED PERSON.**

**PLEASE BE SURE THAT THE VOLTAGE CONNECTED TO APPLIANCE MUST BE EQUAL WITH THE VOLTAGE WHICH IS ON APPLIANCE'S LABEL.**

**THIS APPLIANCE MUST BE CONNECTED TO AN EARTHED OUTLET IN ACCORDANCE WITH SAFETY RULES AND STANDARDS. APPLIANCE'S EARTHING MUST BE CONNECTED TO EARTHING LINE ON PANEL WHICH IS NEAREST TO ELECTRIC INSTALLATION. CONNECTION TO THE MAIN FUSE AND LEAK CURRENT FUSE MUST BE DONE IN ACCORDANCE WITH THE CURRENT REGULATIONS.**

# SAFETY INSTRUCTIONS

**DO NOT USE THE APPLIANCE IN INSUFFICIENT LIGHTED PLACE.**

**DO NOT TOUCH THE MOVING ATTACHMENTS WHILE THE APPLIANCE OPERATES.**

**DO NOT INSTALL THE APPLIANCE IN THE PRESENCE OF FLAMMABLE OR EXPLOSIVE MATERIALS.**

**DO NOT OPERATE THE APPLIANCE WHEN THE MACHINE IS EMPTY.**

**DO NOT LOAD SO LESS OR MORE THAN APPLIANCE'S CAPACITY.**

**DO NOT ATTEMPT TO USE THE APPLIANCE WITHOUT SUITABLE PROTECTIVE EQUIPMENTS.**

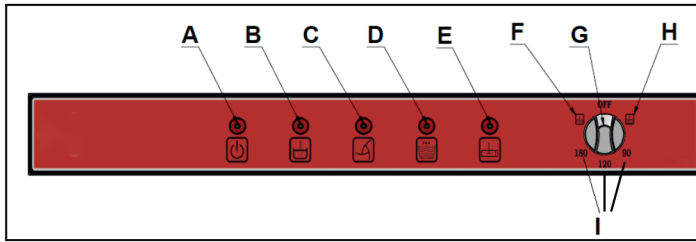
**BECAUSE OF ANY REASON IF THERE IS A FIRE OR FLAME FLARE WHERE THE APPLIANCE IS USED,TURN OFF ALL GAS VALVES AND ELECTRIC CONTACTOR SWITCH QUICKLY AND USE FIRE EXTINGUISHER .NEVER USE WATER TO EXTINGUISH THE FIRE.**

**ALL THE DAMAGES BECAUSE OF NOT HAVING EARTHING CONNECTION WILL NOT BE ON WARRANTY.**

**DO NOT WASH THE DECORATED DISHES.PREVENT SILVER WARES TO CONTACT WITH THE OTHER METALS.**

# OPERATION

## CONTROL PANEL



- A : Appliance ON lamp
- B : Water heated lamp
- C : Washing lamp
- D : Water getting /rinsing
- E : Evacuation lamp
- F : Evacuation position
- G : Appliance OFF position
- H : Water inlet
- I : Washing program

## OPERATING;

- CHANGE THE WATER THAT IS IN WATER TANK 3 TIMES IN A DAY.
- BEFORE PUTTING THE DISHES IN TO THE APPLIANCE,MAKE PREWASH WITH COLD OR WARM WATER WITHOUT USING ANY DETERGENT.
- TURN ON THE WATER SOURCE VALVE AND PLUG IN THE APPLIANCE.
- IN ORDER TO TAKE OFF ANY RESIDUE THAT REMAIN IN STORAGE OR PIPES,OPERATE THE APPLIANCE WHEN IT IS EMPTY.
- WHEN THE APPLIANCE IS AT OFF POSITION,GET "WATER INLET" BY SWITCHING TO RIGHT.IF "WATER HEATED LAMP" SIGNALS ,IT INDICATES THAT THE POWER IS GIVEN TO THE DISHWASHER,WATER IS GIVEN AND HEATED.
- OPEN THE APPLIANCE'S LID AND PUT ENOUGH DETERGENT INTO THE STORAGE.(IF DETERGENT PUMP IS NOT CONNECTED ).
- PLACE THE DIRTY DISHES ON BASKETS.
- CLOSE THE LID AND CHOOSE THE SUITABLE WASHING PROGRAM.CONNECTED INDICATOR LAMP SIGNALS AND WASHING STARTS.
- WASHING PROCESS; FOR HOT WATER AND WASHING WITH DETERGENT (MINIMUM 55°C) ,FOR RINSING WITH HOT WATER AND POLISHER (MINIMUM 75°C).
- AFTER WASHING PROCESS,THE APPLIANCE WILL START THE AUTOMATIC RINSING PROGRAM.
- AT THE END OF PROGRAM,OPEN THE LID AND TAKE OFF WASHED BASKET.PLACE ANOTHER BASKET TO BE WASHED.THE MACHINE WILL DO WASHING AND RINSING PROCESS AT CHOSEN PROGRAM.

# CLEANING & MAINTENANCE

## CLEANING AND MAINTENANCE AFTER EVERY USE

- ALWAYS TURN OFF THE APPLIANCE AND DISCONNECT FROM THE POWER SUPPLY BEFORE CLEANING.
- EVACUATE THE WATER BY TAKING OFF THE STOPPLE AND SWITCHING TO EVACUATION POSITION AFTER EVERY USE.
- CLEAN ALL SURFACES OF THE APPLIANCE WITH HOT SOAPY WATER AFTER EVERY USE.RINSE AND DRY WITH A WET CLOTH.
- CLEAN THE CONTROL PANEL WITH SOFT MOISTY CLOTH,IF NECESSARY USE INEFFECTIVE DETERGENT.
- DO NOT USE ABRASIVE CLEANING CHEMICALS AS THESE CAN LEAVE HARMFUL RESIDUES.
- DO NOT CLEAN THE APPLIANCE BY SPRAYING WATER DIRECTLY,OTHERWISE ELECTRIC MOTOR MAY GET DAMAGED.

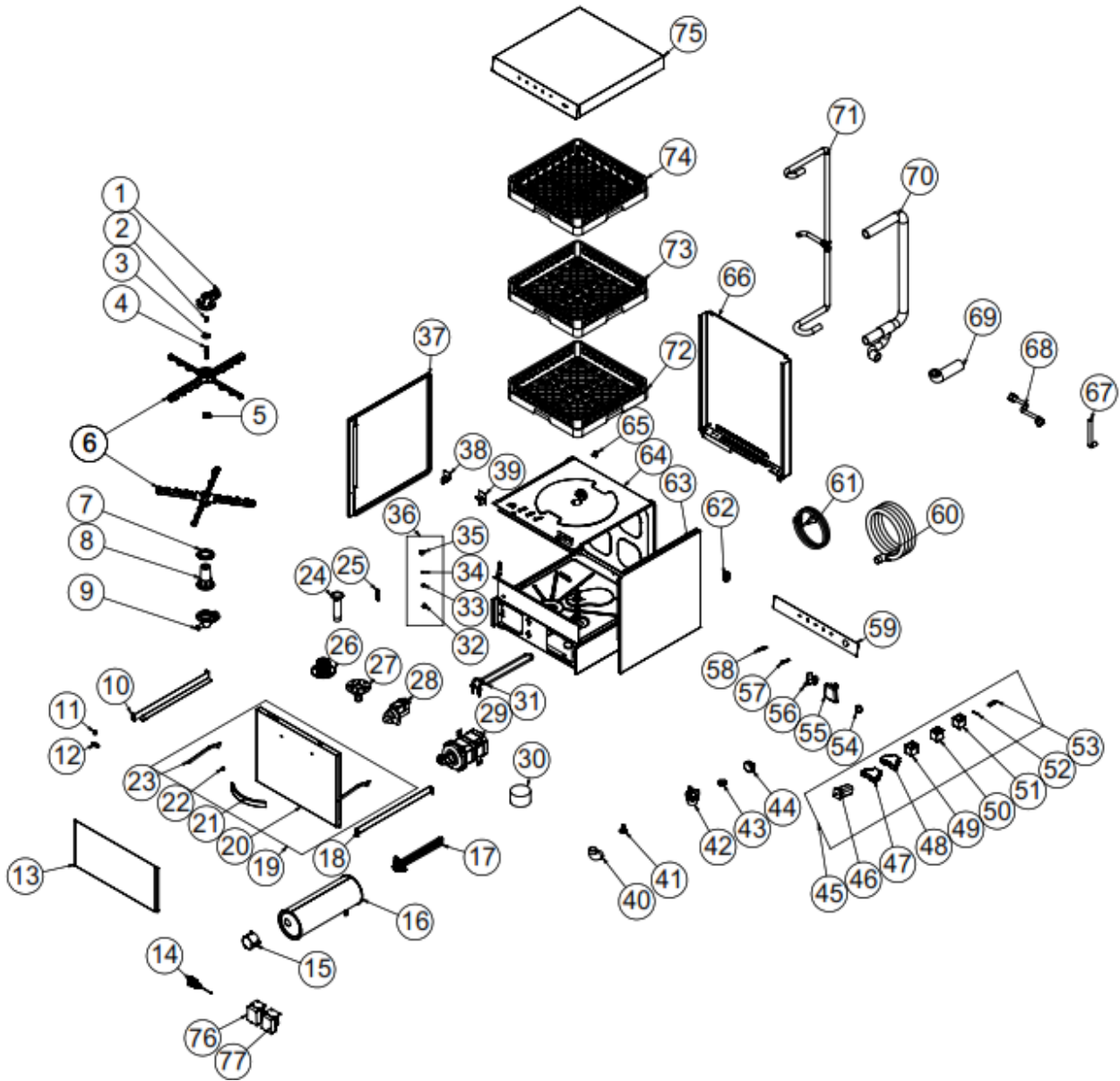
## PERIODIC CLEANING AND MAINTENANCE

- MAINTENANCE SHOULD BE DONE BY QUALIFIED PERSON.
- CLEAN THE LIMES OF THE BURNER,INNER SURFACE OF THE WASHING TANK AND WATER PIPES ONCE OR TWICE IN A YEAR.
- CLEAN THE LIMES WITH USING RINSING AND WASHING NOZZLES ONCE IN A MONTH BY USING VINEGAR OR LIME REMOVER.
- CLEAN THE FILTERS IN THE APPLIANCE ONCE IN A WEEK.AFTER CLEANING BE SURE THAT THUMBSCREW IS COMPRESSED.
- CLEAN THE APPLIANCE'S FOUNTAINS ONCE IN 15 DAYS BY DETACHING IT.
- CLEAN THE APPLIANCE'S EVACUATION STOPPLE AND EVACUATION HOSES ONCE IN 15 DAYS.

# TROUBLESHOOTING

THE APPLIANCE DOESN'T WASH WELL	<ol style="list-style-type: none"> <li>1. CLEAN THE ABSORBING FILTER IF IT IS DIRTY.</li> <li>2. CHECK THE WASHING NOZZLES IF THEY ARE ACCUMULATED WITH RESIDUES OR NOT.</li> <li>3. CHECK THE AMOUNT OF DETERGENT.</li> <li>4. IF CHOSEN WASHING PROGRAM IS TOO LESS, REPEAT THE PROGRAM.</li> <li>5. CHECK IF THE PLATES ARE PLACED TO THE BASKETS CORRECTLY.</li> </ol>
CUPS AND PLATES ARE NOT DRIED WELL	<ol style="list-style-type: none"> <li>1. IF THERE IS POLISHER OR NOT, IF NOT ADD SOME.</li> <li>2. CHECK THE AMOUNT OF POLISHER.</li> </ol>
MIST OVER ON CUPS	<ol style="list-style-type: none"> <li>1. AFTER WASHING PROCESS, TAKE THE CUPS FROM BASKETS.</li> </ol>
CORROSION ON CUPS	<ol style="list-style-type: none"> <li>1. ONLY USE PRODUCTS THAT ARE NOT FOAMING FOR THE PROFESSIONAL DISHWASHERS.</li> </ol>
TOO MUCH FOAM AT STORAGE	<ol style="list-style-type: none"> <li>1. CHECK THE AMOUNT OF DETERGENT .</li> <li>2. IF FOAMING DETERGENT IS USED, POUR IT AND RINSE THE STORAGE TILL THE FOAMS ARE LOST.</li> <li>3. DO NOT WASH WITH COLD WATER, WAIT FOR THE WARMED LAMP</li> </ol>
WASHING OR RINSING HANDLES ARE TURNING SLOWLY	<ol style="list-style-type: none"> <li>1. TAKE OFF WASHING HANDLES AND CLEAN THEM.</li> <li>2. CLEAN THE WASHING PUMP ABSORBING FILTER.</li> <li>3. CHECK THE RINSE WATER PRESSURE</li> </ol>
VISCIDITY AND SPOTS ON CUPS	<ol style="list-style-type: none"> <li>1. REDUCE THE AMOUNT OF POLISHER.</li> </ol>
<ul style="list-style-type: none"> <li>• IF DISHWASHING IS NOT DONE AT SUITABLE QUALITY</li> <li>• IF ANY FUNCTION OF SECURITY DOESN'T WORK</li> </ul> <p>DO NOT USE THE APPLIANCE.</p>	

# SPARE PART LIST-EXPLODING DRAWING



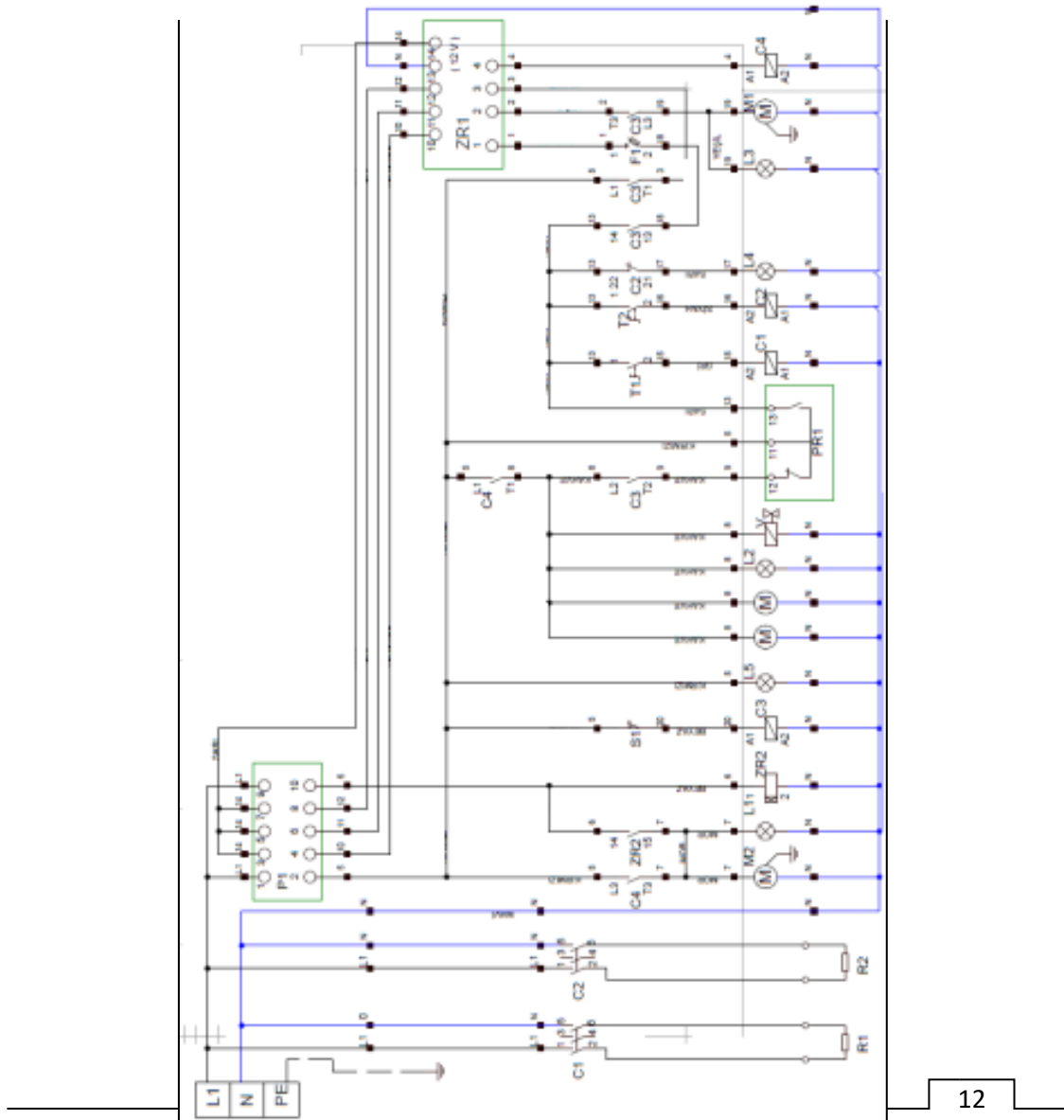
NO	PRODUCT NAME	
1	HOSE UPPER ELBOW	
2	CENTER BUSH	
3	PRESSURE PLASTIC	
4	SPINNING SPINDLE	
5	SPRAY SCREW	
6	FOUNTAIN	
7	SPRAY GASKET	
8	LOWER FOUNTAIN CENTER	
9	HOSE LOWER ELBOW	

10	RIGHT SLIDE SHEET	
11	MAGNET	
12	MAGNET LOCATION	
13	BOTTOM COVER SHEET	
14	THERMOSTAT 0-90°C	
15	RESISTANCE COVER	
16	BOILER TANK	
17	BOILER RESISTANCE 220V-5000W	
18	LEFT SLIDE SHEET	
19	COVER	
20	COVER OUTER SHEET	
21	COVER HANDLE	
22	SLEEVE PART	
23	TOP COVER HANDLE	
24	DRAIN WEDGE	
25	WEDGE PLASTIC	
26	FILTER COVER	
27	DISCHARGE WEDGE LOCATION	
28	DRAIN PUMP	
29	WASHING MOTOR	
30	FILTER	
31	TANK RESISTANCE 230V-2500W	
32	LOCK KIT SPRING PLACE	
33	COVER LOCK SPRING	
34	BALL	
35	LOCK BODY	
36	COVER LOCK	
37	RIGHT SIDE SHEET	
38	CORNER PLASTIC RIGHT	
39	CORNER PLASTIC LEFT	
40	WASHING PUMP HOSE	
41	FOOT	
42	FILTER LOCATION	
43	FILTER NUT	
44	PROCESTAT FLOAT	
45	ELECTRICAL PANEL GROUP	
46	SWITCH	



47	EVACUATION TIME RELAY	
48	WASH TIME RELAY	
49	LCIKO9OIM7 CONTACTOR	
50	CONTACTOR LCIKO9IOM	
51	LCIKI2IOM7 CONTACTOR	
52	GLASS FUSE 5A	
53	HORIZONTAL SENSOR	
54	SWITCH BUTTON	
55	AIR TRAP	
56	VALVE (14 LT)	
57	GREEN WARNING LAMP	
58	YELLOW WARNING LAMP	
59	PANEL LABEL	
60	WASTE WATER HOSE	
61	3*2.5 MM CABLE	
62	PG-16 CABLE FITTING	
63	LEFT SIDE SHEET	
64	CHASSIS	
65	DETERGENT ENTRY PLASTIC	
66	BACK COVER SHEET	
67	VALVE HOSE	
68	HOSE 150CM	
69	PUMP HOSE	
70	WATER INLET HOSE	
71	SPRAY DISTRIBUTION HOSE	
72	PLATE BASKET	
73	SPOON FORK BASKET	
74	GLASS BASKET	
75	TOP COVER SHEET	
76	DETERGENT PUMP	
77	POLISHING PUMP	

# ELECTRICAL CIRCUIT



12

PI	5 PROGRESSIVE COMMUTATOR
SI	MAGNETIC DOOR SENSOR
C1	BOILER CONTACTOR 220V
C2	WASHING CONTACTOR 220V
C3	LID CONTACTOR 220V
C4	RINSING CONTACTOR 220V
L1	EVACUATION LAMP
L2	RINSING LAMP
L3	WASHING LAMP

<b>L4</b>	<b>WATER IS HEATED LAMP</b>
<b>L5</b>	<b>START LAMP</b>
<b>T1</b>	<b>BOILER THERMOSTAT (30-90°C)</b>
<b>T2</b>	<b>WASHING THERMOSTAT (30-90°C)</b>
<b>ZR1</b>	<b>5 CYCLE- CYCLE RELAY (INTER RR-5TG)</b>
<b>ZR2</b>	<b>0-240 SEC. CYCLE RELAY</b>
<b>PRI</b>	<b>PROSSESTAT</b>
<b>M</b>	<b>DETERGENT PUMPS</b>
<b>M1</b>	<b>WASHING MOTOR 0,55 KW 230V</b>
<b>M2</b>	<b>EVACUATION MOTOR 0,44 W 230V</b>
<b>R1</b>	<b>BOILER RESISTANCE 3000W</b>
<b>R2</b>	<b>WASHING RESISTANCE 2500W</b>
<b>F1</b>	<b>LEAKAGE CURRENT SAFETY FUSE</b>
<b>F2</b>	<b>ZR1 FUSE 500MA</b>
<b>V</b>	<b>SOLENOID VALVE 220V</b>
<b>TRI</b>	<b>WASHING MOTOR SAFETY RELAY</b>
<b>TR2</b>	<b>EVACUATION HOSE SAFETY THERMIC</b>



**STEP UP TO THE PLATE**