

## USER MANUAL

# **BOTTLE COOLERS**

RRGO24 - Commercial Single Door Bottle Cooler

RRGO20 – Commercial Hinged Double Door Bottle Cooler

RRGO21 - Commercial Sliding Double Door Bottle Cooler

RRGO22 - Commercial Hinged Triple Door Bottle Cooler

RRGO23 - Commercial Sliding Triple Door Bottle Cooler

**Gastro-line**

# CONTENTS

1. PORTAGE AND INSTALLATION .....	3
2. PREPARATION.....	3
3. CAUTION/WARNING.....	4
4. STORAGE OF PRODUCT .....	4
5. SETTING AND ADJUSTMENT OF TEMPERATURE.....	4
6. MAINTENANCE .....	5
7. ATTENTION/WARNING .....	5
8. NORMAL OPERATION .....	6
9. INSTALLATION OF THE SHELF AND IT'S CLIPS .....	6
10. FRONT PANEL OPERATION.....	6
11. TROUBLESHOOTING.....	7
12. TECHNICAL SERVICE INFORMATION .....	7



**PLEASE READ THIS USER'S MANUAL THOROUGHLY BEFORE USING. KEEP THIS MANUAL HANDY FOR FURTHER REFERENCE.**

## **1. PORTAGE AND INSTALLATION**

1. When carrying the unit, keep the unit vertical, the angle of inclination between sides of the unit and horizontal plane should never be less than 50°, otherwise damage will be caused to the compressor and affect normal operation of the unit;
2. After unpacking the unit, remove the packing materials and place the unit on a sturdy, level floor, near a 13amp power socket;
3. Be sure to leave at least 20 cm of distance between the back of the unit and wall for ventilation and leave enough room for the door(s) to open at an angle of 160°
4. Keep the unit away from heat sources and avoid direct sunlight;
5. Never place the unit in a location where water or with high moisture can penetrate. E.g. under a sink.

## **2. PREPARATION**

1. Connection to power: The unit must be connected to the socket via the supplied fused 13amp, (BS1363), plug. The unit will accept a single phase A.C supply of between 187v to 242v. Do not use multi socket adaptors when installing the unit. Follow the rule of one plug per socket!
2. Operation test: Close the door(s) and connect the unit to the power supply. 30 minutes after power on, the temperature inside cabinet will lower, this means the unit is operating normally.

### **3. CAUTION/WARNING**



1. Do not fit any other plug to the power cord not complying with BS1363;
2. Do not damage the power cord and the plug;
3. Never splash water directly on the unit;
4. Prohibition of storage of explosive or hazardous goods, such as ether, gas, bonding agents, fireworks, etc.
5. Prohibition of spray of inflammables such as paints, coating materials, etc, near the unit. Otherwise it could cause a fire.
6. You should not re-plug the unit into the power supply or start the compressor within 5 minutes after disconnection of power.
7. Do not make any modifications to this unit.
8. This unit is not suitable for storage of pharmaceutical products.
9. Keep the door key in a location where children cannot gain access.

### **4. STORAGE OF PRODUCT**

1. Do not put large amounts of product into the unit at one time. You should leave some space around the goods to let cold air inside the cabinet circulate. Keep bottled produce away from the walls of the interior cabinet, to prevent freezing.
2. The shelving can be adjusted to suit different sized products.
3. Do not put warm food into the unit. This must be pre-cooled to room ambient. Keep warm product out of the cooled space, and the doors closed. This will conserve energy and prolong service life of the compressor.

### **5. SETTING AND ADJUSTMENT OF TEMPERATURE**

Please see the attachment instruction form.

## 6. MAINTENANCE

**Disconnect the power supply before attempting any maintenance on the unit!**

1. This cooler's condenser must be cleaned every four months. Remove the back panel, and gently brush the condenser in the direction of the fins. Be careful not to bend the fins. Finish with a vacuum cleaner and clear any dust from around the condenser tray.
2. Keep the door gasket clean, the door gasket can be removed for cleaning and can be remounted again. Putting a little talcum powder on the magnetic surface of the door gasket will prolong its service life.
3. Bulb replacement When the bulb is burnt out, first remove the left side cover of the light-box take out the light logo panel replace with a new bulb, insert the light logo panel, then replace the left side cover; If the inner light fails, unscrew the screw on the lampshade, overturn the lampshade, and replace the bulb. Replace the lampshade, and tighten the screw.
4. If the power supply cord is damaged. It must be replaced by the manufacturer, it's service agent, or a similar qualified person in order to avoid a shock or fire hazard.

## 7. ATTENTION/WARNING

1. The unit is not suitable for storage of blood, pharmaceutical products and biological products. If you have demand in this field, please contact our dealer for purchase of our medical series of products.
2. Don't touch temperature sensor inside the cabinet when accessing the inside of the unit, otherwise it may influence the operating performance of the thermostat, and the system will increase it's energy consumption.
3. Do not put weights on the top of the unit.
4. The drainage hole on the bottom of the unit is used for drainage of condensate collected in the cabinet. Please ensure the hole cover is tight after drainage of water, otherwise it may influence cooling effect of the unit, because of warm air leakage into the cabinet.
5. If problems occur, please ask a professional person to service the unit.



You should not dismantle the unit without prior authorization.

## 8. NORMAL OPERATION


1. You may sometimes hear a quiet sound of water flowing in the unit. This is normal and is the sound of refrigerant flowing inside the pipe.
2. Compressor, condenser and the parts of the unit near the door are warm or hot.
3. In a humid place, there is dew on the casing of the door. It can be dried with a dry cloth.

## 9. INSTALLATION OF THE SHELF AND IT'S CLIPS

Place the shelf support clips into the pilasters (4 shelf support clips per shelf). Indexing holes are provide on the pilasters in evenly spaced intervals to assist you in positioning the support clips at the same height.



## 10. FRONT PANEL OPERATION

1. Set temperature: Press **SET** button, the set temperature is displayed; Press **▲** or **▼** button to modify and store the displayed value, Press **SET** button to exit the adjustment and display the cold-room temperature.
2. Lamp control: Press  button, lamp will turn on/off.
3. Turn ON/OFF the controller: Push **▼** key and hold for 6s, the controller is OFF and display "---" ,push **▼** key again, the controller is ON.

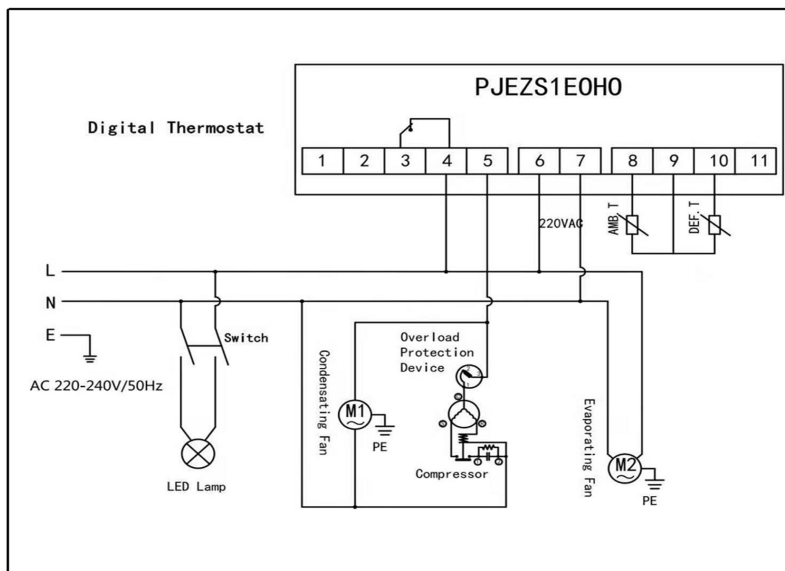


# 11. TROUBLESHOOTING

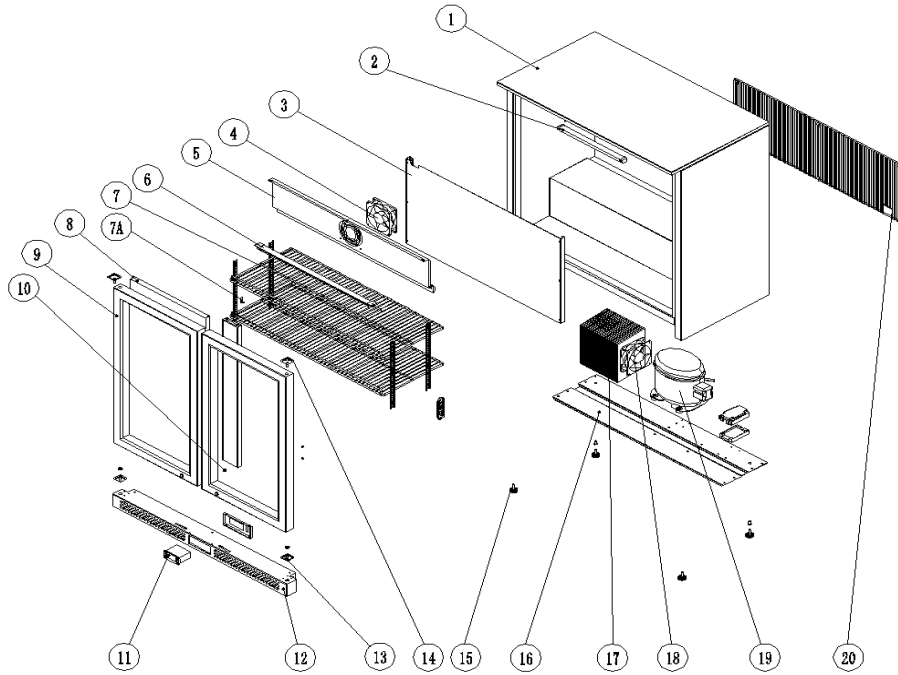
PROBLEM	POSSIBLE CAUSES	HOW TO SOLVE
The unit does not operate	Bad connection of plug or fuse burnt out	Unplug the plug and re-connect the plug to power supply or check and replace the fuse
Abnormal operation of the compressor or it has a buzzing sound	The power voltage is out of rated range	Disconnect the power supply immediately and reconnect with it after normal voltage is restored. It is necessary to have a voltage stabilizer in case of poor power supply.
Compressor operates too long and no frost on the surface of the evaporator	Refrigeration system is at fault (leakage or blocked)	Sent the unit to service department for repair
There is frost or ice on the walls of the inner cabinet and too low internal temperature. The compressor operates without stopping.	The thermostat does not work	Ask the service department for a repair
The internal temperature is too high and the compressor operates without stop	Bad heat dissipation and ventilation of condenser	Improve ventilation Clean condenser
	Too much warm food was put in at one time	Take out some food
	Door open frequently or door has been left open	Decrease number and duration of door openings.
Noise level high	The unit is not level	Level unit with the adjustable legs
	The fastener of the unit is loose	
	Pipes touching near the compressor	

# 12. TECHNICAL SERVICE INFORMATION

Electric Connection Diagram



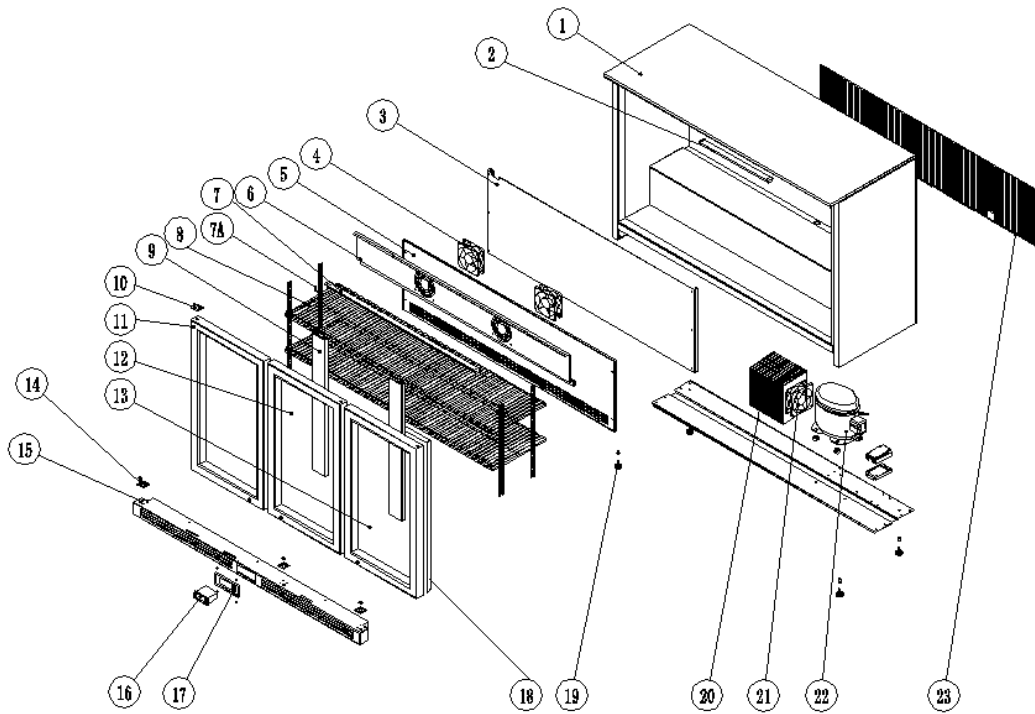
## Explore view and part list: RRG020 & RRG021



No in explode view	Description	Service Part No
1	Box	GN220HP001
2	Lamp plastic cover	GN220HP020
3	Evaporator plate	GN220HP002
4	Fan	GN126HP004
5	Fixed block	GN220HP004
6	Led lamp	GN220HP005
7	Wire shelf	GN220HP006
7A	Shelf support clip	GN126HP021
8	Door gasket	GN220HP021
9	Left glass door	GN220P007/GN220P001
10	Right glass door	GN220P018/GN220P002
11	Thermostat	GN126HP010
12	Lower decorative board	GN220HP009
13	Lower hinge	GN220HP010/BSC210P005
14	Upper hinge	GN220HP011/BSC210P006
15	Adjustment foot	GN126HP013
16	Compressor base	GN220HP013
17	Condenser	GN126HP019
18	Condensing fan	GN126HP020
19	Compressor	GN220HP016
20	Meshes	GN220HP017

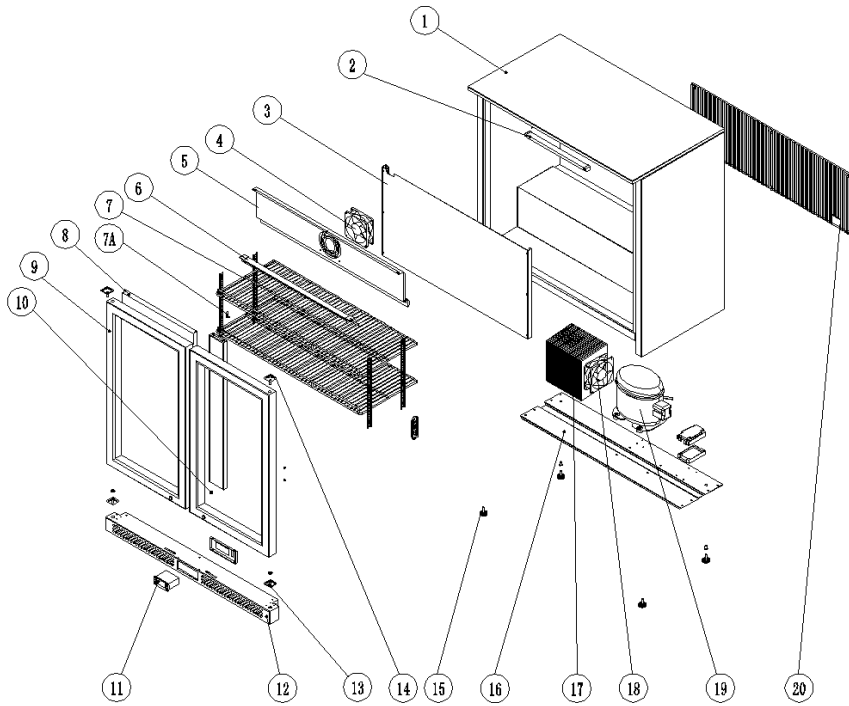


## Explore view and part list: RRG023 & RRG024



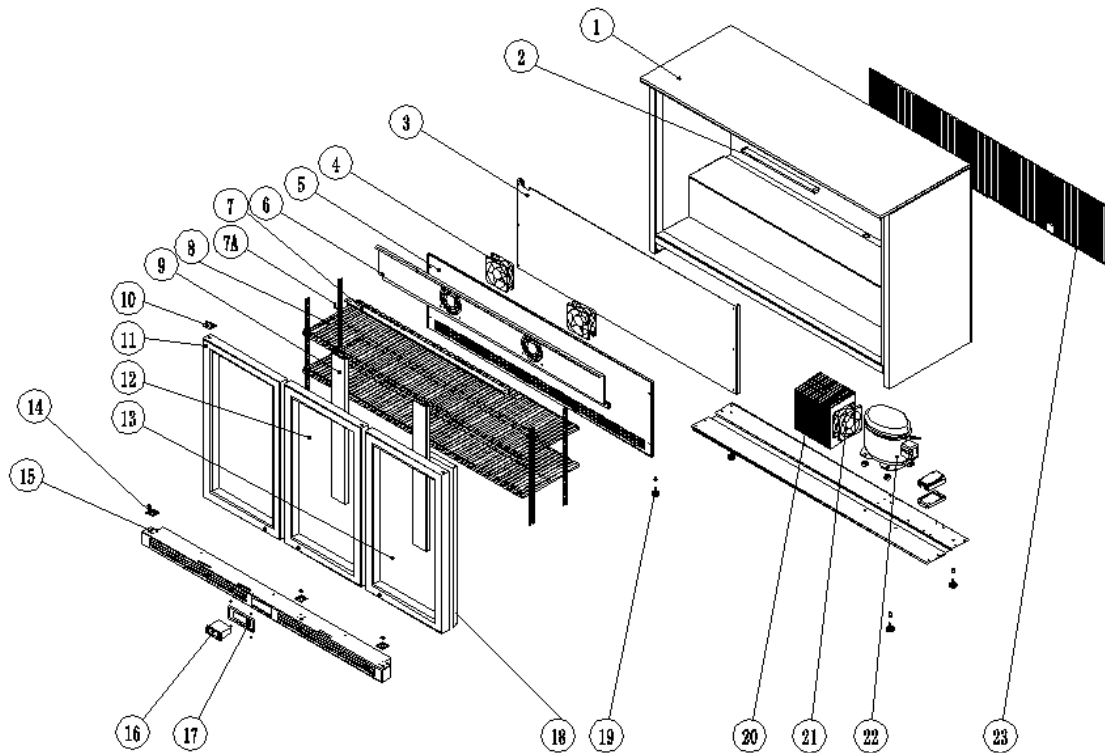
No in explode view	Description	Service Part No
1	Box	GN320HP001
2	Lamp plastic cover	GN320HP023
3	Evaporator plate	GN320HP002
4	Fan	GN126HP004
5	Air duct board	GN320HP004
6	Fixed block	GN320HP005
7	Led lamp	GN320HP006
7A	Shelf support clip	GN126HP021
8	Wire shelf	GN320HP007
9	Middle support plate	GN32HP008
10	Upper hinge	BSC220HP006
11	Left glass door	GN320HP009/ BSC220HP001
12	Middle glass door	GN320HP010/ BSC220HP002
13	Right glass door	GN320HP020/ BSC220P002
14	Lower hinge	BSC220HP005
15	Lower decorative board	GN320HP012
16	Thermostat	BSC126HP010
17	Thermostat cover	BSC126HP012
18	Door gasket	GN320HP024
19	Adjustment foot	BSC126HP013
20	Condenser	BSC126HP019
21	Condensing fan	BSC126HP020
22	Compressor	GN320HP018
23	Meshes	GN320HP019

## Explore view and part list: RRG020



No in explode view	Description	Service Part No
1	Box	GN220SP001
2	Lamp plastic cover	GN220SP020
3	Evaporator plate	GN220SP002
4	Fan	GN126HP004
5	Fixed block	GN220SP004
6	Led lamp	GN220SP005
7	Wire shelf	GN220HP006
7A	Shelf support clip	GN126HP021
8	Door gasket	GN220SP021
9	Left glass door	GN220SP002
10	Right glass door	GN220SP003
11	Thermostat	GN126HP010
12	Lower decorative board	GN220SP009
13	Lower hinge	GN220SP005
14	Upper hinge	GN220SP006
15	Adjustment foot	BSC126HP013
16	Compressor base	GNS220P013
17	Condenser	GN126HP019
18	Condensing fan	BSC126HP020
19	Compressor	GN220HP016
20	Meshes	GN220HP017

## Explore view and part list: RRG022



No in explode view	Description	Service Part No
1	Box	GN320HP001
2	Lamp plastic cover	GN320HP023
3	Evaporator plate	GN320HP002
4	Fan	GN126HP004
5	Air duct board	GN320HP004
6	Fixed block	GN320HP005
7	Led lamp	GN320HP006
7A	Shelf support clip	GN126HP021
8	Wire shelf	GN320HP007
9	Middle support plate	GN32HP008
10	Upper hinge	BSC220HP006
11	Left glass door	GN320SP009
12	Middle glass door	GN320SP010
13	Right glass door	GN320SP020
14	Lower hinge	BSC220HP005
15	Lower decorative board	GN320HP012
16	Thermostat	BSC126HP010
17	Thermostat cover	BSC126HP012
18	Door gasket	GN320HP024
19	Adjustment foot	BSC126HP013
20	Condenser	BSC126HP019
21	Condensing fan	BSC126HP020
22	Compressor	GN320HP018
23	Meshes	GN320HP019

ORRGO24 - Commercial Single Door Bottle Cooler  
RRGO20 - Commercial Hinged Double Door Bottle Cooler  
RRGO21 - Commercial Sliding Double Door Bottle Cooler  
RRGO22 - Commercial Hinged Triple Door Bottle Cooler  
RRGO23 - Commercial Sliding Triple Door Bottle Cooler

**Gastro-line**

Distributed by RG Distributors Ltd, Unit 7 Jade Business Park, Spring Road, Seaham, SR7 9DR. • Tel: 0333 358 3678

