

# INSTRUCTION MANUAL

# CONTENDER

STEP UP TO THE PLATE



## GLASS DRYER AND POLISHER

DMG011 | DMG012

# CONTENTS

1. GENERAL INFORMATION .....	3
2. SAFETY AND WARRANTY .....	3
3. TECHNICAL SPECIFICATIONS .....	4
4. INSTALLATION .....	4
5. OPERATION .....	5
6. MAINTENANCE .....	6
7. TROUBLESHOOTING .....	6
8. ELECTRICAL SCHEMATICS .....	6
9. PARTS BREAKDOWN .....	7

# I. GENERAL INFORMATION

BEFORE OPERATING ANY EQUIPMENT, ALWAYS READ AND FAMILIARISE YOURSELF WITH ALL OPERATION AND SAFETY INSTRUCTIONS.

E-CATERING WOULD LIKE TO THANK YOU FOR PURCHASING THIS MACHINE. IT'S OF THE UTMOST IMPORTANCE TO SAVE THESE INSTRUCTIONS FOR FUTURE REFERENCE. ALSO SAVE THE ORIGINAL BOX AND PACKAGING FOR SHIPPING THE EQUIPMENT IF SERVICING OR RETURNING OF THE MACHINE IS REQUIRED.

# 2. SAFETY AND WARRANTY



WHEN USING ELECTRICAL APPLIANCES, BASIC SAFETY PRECAUTIONS SHOULD ALWAYS BE FOLLOWED, INCLUDING THE FOLLOWING:

- READ ALL INFORMATION BEFORE USE.
- FOR COMMERCIAL USE ONLY.
- DO NOT TOUCH HOT SURFACES.
- PROTECT AGAINST ELECTRICAL SHOCK BY KEEPING ALL CORDS, PLUGS, AND OTHER ELECTRICAL COMPONENTS AWAY FROM WATER OR OTHER LIQUIDS.
- UNPLUG THIS UNIT WHEN NOT IN USE AND BEFORE CLEANING.
- ALLOW THE UNIT TO COOL BEFORE PUTTING ON OR TAKING OFF PARTS.
- DO NOT OPERATE THIS OR ANY APPLIANCE WITH A DAMAGED ELECTRICAL CORD OR PLUG.
- DO NOT OPERATE THIS OR ANY APPLIANCE AFTER IT HAS MALFUNCTIONED OR BEEN DAMAGED IN ANY WAY.
- DO NOT USE OUTDOORS.
- DO NOT PLACE ON OR NEAR A HOT GAS OR ELECTRIC BURNER.
- DISCONNECT THE UNIT BY TURNING THE TEMPERATURE AND TIMER CONTROL TO "OFF", THEN REMOVING THE ELECTRICAL PLUG FROM THE WALL OUTLET.
- DO NOT USE APPLIANCE FOR ANY APPLICATION OTHER THAN DESIGN USE.
- DO NOT ALLOW THIS GLASS POLISHER TO TOUCH OR BE COVERED BY FLAMMABLE MATERIAL, SUCH AS CURTAINS, DRAPERIES, WALLS, ETC., WHEN IN OPERATION.
- DO NOT CLEAN WITH METAL SCOURING PADS AS PIECES CAN BREAK OFF AND TOUCH ELECTRICAL COMPONENTS, HEIGHTENING THE RISK OF ELECTRICAL SHOCK.
- DO NOT COVER INTERIOR OF THIS UNIT WITH METAL FOIL AS IT MAY CAUSE THE OVEN TO OVERHEAT.
- DO NOT PLACE SHARP OR SHARP CORNER OBJECTS AROUND THE PRODUCT TO AVOID SCRATCHING THE SURFACE.
- TURN THE APPLIANCE OFF BY TURNING CONTROL KNOB TO THE "OFF" POSITION.
- NOTE THAT THE USE OF ACCESSORIES NOT RECOMMENDED BY THE MANUFACTURER MAY RESULT IN INJURY.
- CHILDREN MUST BE SUPERVISED BEFORE USING THIS PRODUCT.
- THIS APPLIANCE CAN BE USED BY CHILDREN AGED FROM 8 YEARS OLD AND ABOVE AND PERSONS WITH REDUCED PHYSICAL, SENSORY OR MENTAL CAPABILITIES OR LACK OF EXPERIENCE AND KNOWLEDGE IF THEY HAVE BEEN GIVEN SUPERVISION OR INSTRUCTION CONCERNING USE OF THE APPLIANCE IN A SAFE WAY AND UNDERSTAND THE HAZARDS INVOLVED. CHILDREN SHALL NOT PLAY WITH THE APPLIANCE. CLEANING AND USER MAINTENANCE SHALL NOT BE MADE BY CHILDREN WITHOUT SUPERVISION.
- WHEN USING THE APPLIANCE IN SHOPS, SNACK BARS, HOTELS ETC., CHECK THE VOLTAGE AND OUTLET TO MAKE SURE THE APPLIANCE IS CORRECTLY CONNECTED WITH POWER.
- PLACE UNIT ON A FLAT SURFACE THAT IS WELL VENTILATED.



**PLEASE NOTE:** UNAUTHORISED MAINTENANCE WILL VOID THE WARRANTY. THE WARRANTY COVERS ELECTRICAL AND PART FAILURES, NOT IMPROPER USE.



**WARNING:** THE PACKAGING COMPONENTS ARE CLASSIFIED AS NORMAL SOLID URBAN WASTE AND CAN THEREFORE BE DISPOSED OF WITHOUT DIFFICULTY. IN ANY CASE, FOR SUITABLE RECYCLING, WE SUGGEST DISPOSING OF THE PRODUCTS SEPARATELY (DIFFERENTIATED WASTE) ACCORDING TO THE CURRENT NORMS.

### 3. TECHNICAL SPECIFICATIONS

MODEL	DMG011	DMG012
		
VOLTAGE	220-240V	220-240V
POWER:	1200W	2400W
CASING MATERIAL	SS304	SS304
BRUSH MATERIAL	FIBRE	FIBRE
NUMBER OF BRUSHES	5	8
NO. OF CUPS PER HR	UP TO 330	UP TO 660
SIZE: (MM)	330L X 330W X 500H	550L X 330W X 500H
HOT AIR TEMPERATURE:	60 DEGREE C	60 DEGREE C

### 4. INSTALLATION

BEFORE USING YOUR GLASS POLISHER, PLEASE FOLLOW THESE SIMPLE INSTRUCTIONS. FAILING TO DO SO MAY CAUSE INJURY TO THE USER AND DAMAGE THE MACHINE:

1. INSTALL THE MACHINE ON A FLAT SURFACE OF A SINK AND MAKE SURE THE MACHINE IS UPRIGHT AND STABLE.
2. ATTACH AIR BLOWER ONTO THE BASE WITH SCREW PROVIDED, MAKE SURE THE OUTLET IS CENTERED.
3. ASSEMBLE THE BRUSHES AND CHECK THAT THEY ARE SECURELY IN PLACE. THE BRUSH IS MADE OF MICROFIBER, DURING THE WORKING PROCESS, THE HOT AIR COMING OUT FROM AIR BLOWER TO KEEP BRUSHES DRY FOR MAINTAIN A GOOD POLISHER EFFECT, WET BRUSHES DO NOT DRY AND POLISH THE CUP. ALWAYS KEEP THE BRUSH AS DRY IS ESSENTIAL. AT BUSY TIME, IF THE BRUSH CANNOT BE DRIED IN TIME, PLEASE STOP WORKING FOR 20 MINUTES AND LEAVE THE MACHINE WORKING SO THAT THE BRUSH CAN BE DRIED IN HOT AIR.



**WARNING:** PLUG THE UNIT INTO GROUNDED OUTLETS ONLY THAT MATCH THE UNIT'S VOLTAGE AND FREQUENCY LISTED ON THE MOTOR!



**WARNING:** CHECK THE ELECTRIC CORD AND PLUG TO MAKE SURE IT IS CLEAN AND DRY BEFORE USING!



**WARNING:** THE SWITCH MUST NOT CONTACT THE WATER, KEEP IT DRY!

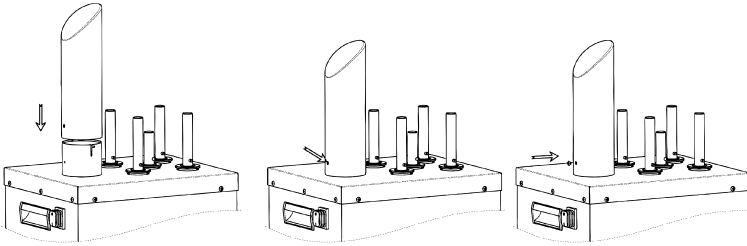


**CAUTION:** CHECK AND MAKE SURE THE BRUSHES ARE SECURELY IN PLACE BEFORE TURNING ON THE MACHINE!



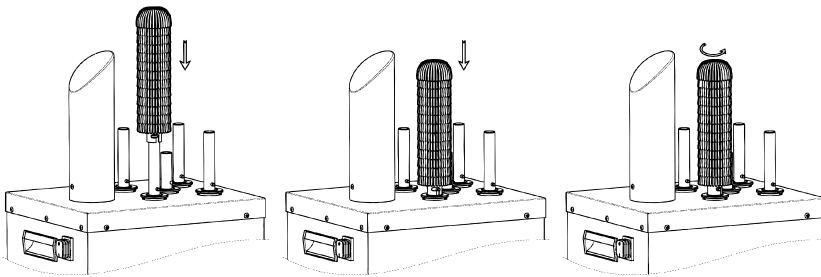
**CAUTION:** DO NOT USE THE MACHINE FOR ANY OTHER PURPOSE THAN ITS INTENDED DESIGN!

## ASSEMBLY INSTRUCTIONS OF THE AIR BLOWER



ASSEMBLE AIR BLOWER ONTO THE HOT-AIR PIPE BASE, ADJUST PROPER DIRECTION BY ROTATION, ALIGN THE OVAL HOLE ON THE AIR BLOWER WITH THE SCREW HOLE ON THE HOT-AIR PIPE, THEN TIGHTEN THE SCREWS.

## ASSEMBLY INSTRUCTIONS OF THE BRUSHES



ASSEMBLE BRUSHES ONTO DRIVE SHAFT BASE, ROTATE ANTI-CLOCKWISE TO MAKE THE NOTCH ON THE BRUSH HANDLE LOCK INTO THE TRANSVERSE PIN OF DRIVE SHAFT. **NOTE:** THE SHORT BRUSH SHOULD BE INSERTED ONTO CENTER POST.

# 5. OPERATION

FOLLOW THE BELOW STEPS IN ORDER TO GET THE DESIRED RESULTS:

1. PLUG IN THE MACHINE
2. SWITCH ON MACHINE
3. GRASP GLASS AT THE BASE AND INSERT ONTO CENTER BRUSH
4. DRY AND POLISH THE GLASS FOR APPROXIMATELY 12-13 SECONDS. **NOTE:** HOLDING THE GLASS WITH A SLIGHT-LEFT OR RIGHT SPIN TO GET BETTER RESULTS
5. REPEAT STEPS 3 AND 4 AS NECESSARY
6. SWITCH OFF THE MACHINE AND UNPLUG WHILE NOT IN USE

# 6. MAINTENANCE

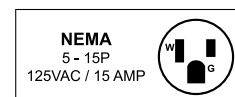
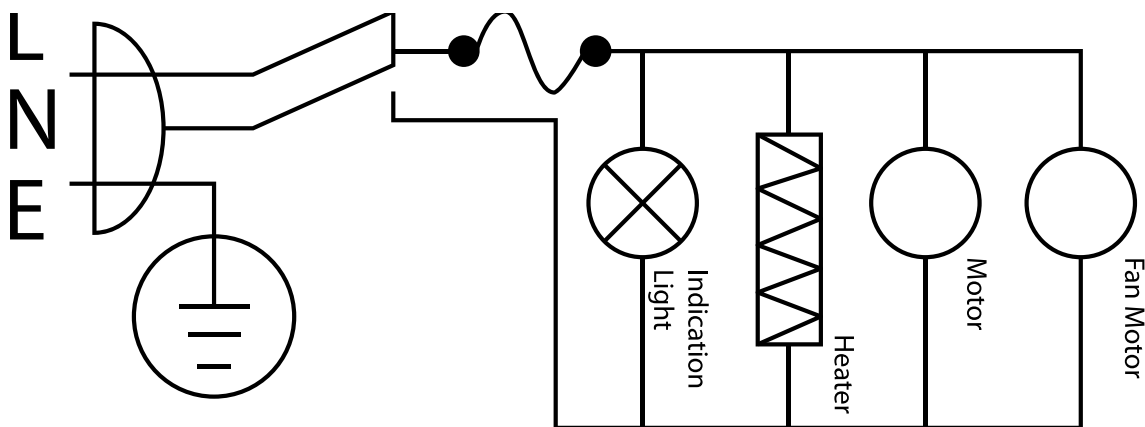
## CLEANING & MAINTAINING YOUR GLASS POLISHER

- TO CLEAN, ENSURE GLASS POLISHER IS OFF AND UNPLUG CORD FROM THE OUTLET.
- WAIT FOR THE GLASS POLISHER TO COOL DOWN.
- CLEAN EXTERNAL SURFACE OF GLASS POLISHER DAILY USING A DAMP CLOTH OR SPONGE. DO NOT IMMERSE THE WHOLE UNIT INTO WATER OR WASHING IT IN RUNNING WATER AS THIS WILL CAUSE SERIOUS DAMAGE TO THE UNIT.
- WHEN CLOSING FOR THE DAY, OPERATE THE MACHINE FOR 20 MINUTES TO DRY THE BRUSHES AS WILL ENSURE THE USE EFFICIENCY IN NEXT WORKING CYCLE.

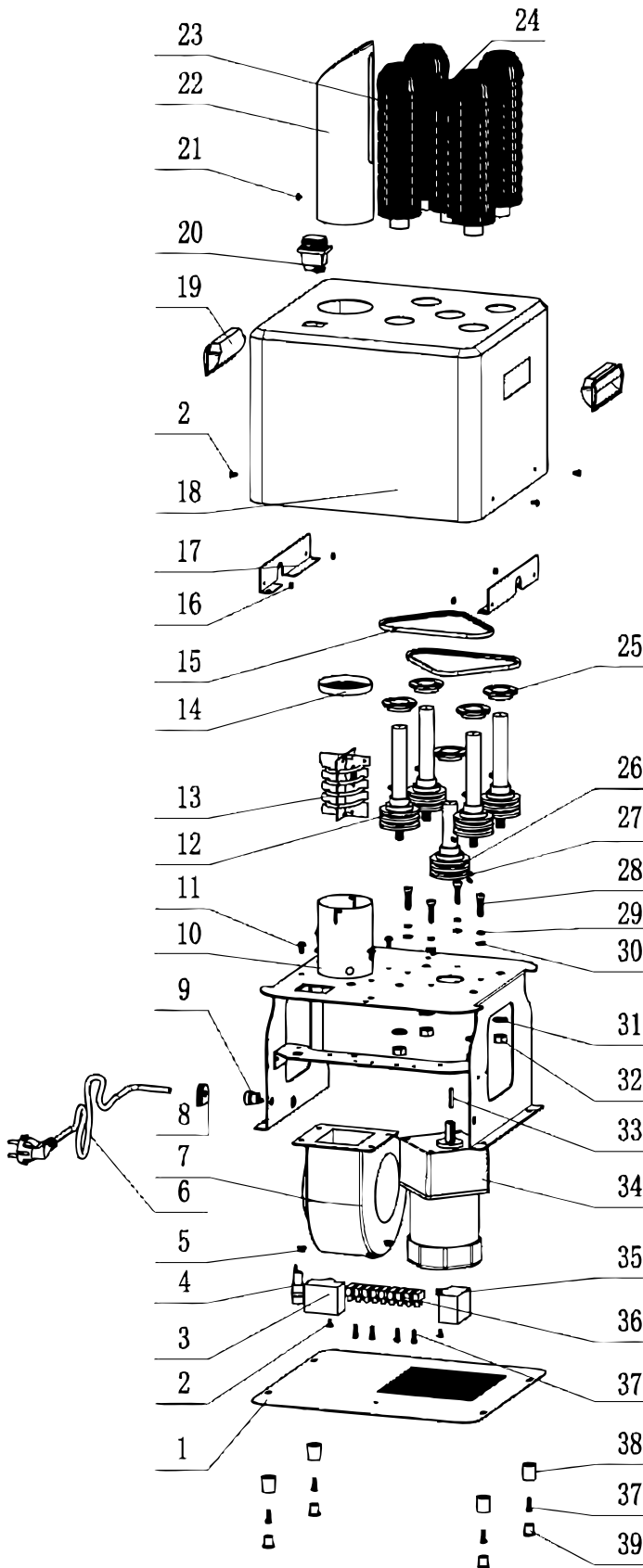
# 7. TROUBLESHOOTING

PROBLEMS	POSSIBLE SOLUTION
THE GLASS POLISHER DOES NOT WORK AFTER BEING SWITCHED ON.	<ul style="list-style-type: none"> <li>- MAKE SURE GLASS POLISHER IS PLUGGED IN CORRECTLY.</li> <li>- BE SURE IT IS SWITCHED ON.</li> <li>- CONTACT SERVICE PROVIDER.</li> </ul>
THERE IS A VERY LOUD NOISE WHEN THE GLASS WASHER IS IN USE.	<ul style="list-style-type: none"> <li>- DO NOT ATTEMPT TO DISMANTLE THE GLASS WASHER.</li> <li>- CHECK THE BRUSH IS SECURELY IN PLACE.</li> <li>- CONTACT SERVICE PROVIDER RIGHT AWAY TO EXAMINE THE MOTOR AND INSIDE GEARS.</li> </ul>
THE BRUSH SPIN CYCLE IS SLOW AND THE GLASSES ARE NOT POLISHED PROPERLY.	<ul style="list-style-type: none"> <li>- CHECK TO SEE IF SOMETHING IS JAMMED INSIDE THE BRUSHES.</li> <li>- CONTACT SERVICE PROVIDER RIGHT AWAY TO EXAMINE THE MOTOR AND INSIDE GEARS.</li> </ul>
THE BRUSHES ARE LOOSE OR FRACTURED.	<ul style="list-style-type: none"> <li>- CHECK THE BRUSH IS SECURELY IN PLACE AND HOLDER IS IN CORRECT POSITION.</li> <li>- REPLACE THE OLD BRUSHES REGULARLY.</li> </ul>

# 8. ELECTRICAL SCHEMATICS



# 9. PARTS BREAKDOWN



Item No.	Description	Position
68861	Bottom Plate Assembly for 44516	1
68862	M4x8 Large Flat Head Screw for 44516	2
68863	Capacitor 1 for 44516	3
68864	Fuse for 44516	4
68865	M5 Hex Flange Nut for 44516	5
68876	Power Cord for 44516	6
68877	Fan Motor for 44516	7
68878	Power Cord Fixture for 44516	8
68879	Wire Buckle for 44516	9
68880	Frame Bracket Assembly for 44516	10
68881	M5x12 Round Head Screw for 44516	11
68882	Shaft Assembly for 44516	12
68883	Heating Element for 44516	13

Item No.	Description	Position
68884	Heating Element Pressure Ring for 44516	14
68885	Belt for 44516	15
68886	M4 Hex Screw Nut for 44516	16
68887	Shell Support Bar for 44516	17
68888	Shell for 44516	18
68889	Handle for 44516	19
68890	Power Switch for 44516	20
68891	M4x4 Flat Head Screw for 44516	21
68892	Hot Air Pipe for 44516	22
68893	Long Brush for 44516	23
68894	Short Brush for 44516	24
68895	Shaft Cover (Optional) for 44516	25
68896	Drive Shaft for 44516	26

Item No.	Description	Position
68897	M4x10 Hexagon Stud for 44516	27
68898	M6x20 Hexagon Screw for 44516	28
68899	Ø6 Spring Pad for 44516	29
68900	Ø6 Flat Pad for 44516	30
68901	Ø10 Non-Slip Pad for 44516	31
68902	M10 Lock-Proof Hex Nut for 44516	32
68903	Joint Block for 44516	33
68904	Motor for 44516	34
68905	Capacitor 2 for 44516	35
68906	Terminal for 44516	36
68907	M4x16 Round Screw for 44516	37
68908	Foot for 44516	38
68909	Foot Pad for 44516	39



**STEP UP TO THE PLATE**