

CONTENDER

STEP UP TO THE PLATE



CONTENDER DOUGH ROLLER - PIZZA FORMER

VGDO06 · VGDO07 · VGDO08 · VGDO11 · VGDO12

CONTENTS

SERIAL NO	3
RATING PLATE	3
GENERAL INFORMATION	3
IMPORTANCE OF MANUAL	3
WARRANTY	3
INFORMATION REGARDING NOISE	4
SAFETY PRECAUTIONS	4
MACHINE FEATURES	5
INSTALLATION	5
USER PRECAUTIONS	5
INSTALLATION METHOD	5
ELECTRICAL CONNECTION	5
START-UP	6
CONTROL DEVICES	6
USE AND OPERATION	7
REGULATION OF THICKNESS	7
SMALL BALANCE REGULATION	7
MACHINE USE	8
USE FOR DISC FORMATION	9
USE FOR RECTANGLE FORMATION	9
MAINTENANCE	9
CLEANING	10
SHAFT AND ROLLER LUBRICATION	10
TROUBLESHOOTING	10
DEMOLITION AND DISPOSAL	10
WIRING DIAGRAMS.....	11
TECHNICAL DATA.....	22

SERIAL NO. RATING PLATE

THE IDENTIFICATION LABEL CONSISTS IN A GREY SCREEN-PRINTED LABEL ATTACHED TO THE BACK OF THE ROLLING MACHINE. THE FOLLOWING DATA IS CLEARLY AND INDELIBLY MARKED ON THE PLATE:

- NAME OF MANUFACTURER; -
- ELECTRICAL POWER (KW/A);
- MODEL;
- WORDING "MADE IN ITALY";
- SERIAL NO. ;
- VOLTAGE AND ELECTRICAL FREQUENCY (VOLT/HZ);
- YEAR OF MANUFACTURE
- WEIGHT OF ROLLING MACHINE

GENERAL INFORMATION



BEFORE USING THE ROLLING MACHINE IN QUESTION, IT IS MANDATORY TO READ AND UNDERSTAND THIS MANUAL IN ALL ITS PARTS.



THIS MANUAL MUST ALWAYS BE AVAILABLE TO "AUTHORISED OPERATORS" AND BE KEPT NEAR THE ROLLING MACHINE IN A SAFE AND PROTECTED LOCATION.



THE MANUFACTURER DECLINES ALL RESPONSIBILITY FOR ANY DAMAGE TO PERSONS, ANIMALS AND PROPERTY CAUSED BY NON-OBSERVANCE OF THE RULES DESCRIBED IN THIS MANUAL.



THIS MANUAL IS AN INTEGRAL PART OF THE ROLLING MACHINE AND MUST BE STORED UNTIL THE FINAL DISPOSAL OF THE MACHINE ITSELF.



"AUTHORISED OPERATORS" MUST ONLY PERFORM OPERATIONS ON THE ROLLING MACHINE THAT FALL UNDER THEIR SPECIFIC RESPONSIBILITY.

WARRANTY

THE WARRANTY IS VALID FOR ONE YEAR WITH EFFECT FROM THE DATE OF THE TAX INVOICE ISSUED AT THE TIME OF PURCHASE. WITHIN THIS PERIOD, PARTS THAT HAVE BEEN INSPECTED AND UNEQUIVOCALLY CONFIRMED TO HAVE MANUFACTURING DEFECTS, EXCEPT FOR ELECTRICAL AND WEAR COMPONENTS, SHALL BE REPLACED OR REPAIRED FREE OF CHARGE AND ONLY EX-WORKS AT OUR FACILITIES.

SHIPPING AND LABOUR COSTS ARE NOT COVERED BY THE WARRANTY.

THE WARRANTY SHALL EXPIRE IN CASES WHERE IT IS CONFIRMED THAT THE DAMAGE WAS CAUSED BY: TRANSPORT, POOR OR INSUFFICIENT MAINTENANCE, OPERATOR INCOMPETENCY, TAMPERING, REPAIRS MADE BY UNAUTHORISED PERSONNEL, FAILURE TO OBSERVE THE INSTRUCTIONS OF THE MANUAL.

RECOURSE AGAINST THE MANUFACTURER SHALL BE EXCLUDED FOR DIRECT OR INDIRECT DAMAGE IN THE EVENT MACHINE DOWNTIME CAUSES: FAILURE, WAITING FOR REPAIRS OR IN ANY CASE IS ATTRIBUTABLE TO THE NON-PHYSICAL PRESENCE OF THE EQUIPMENT.



TAMPERING WITH AND/OR THE REPLACEMENT OF PARTS WITH NON-ORIGINAL SPARES SHALL INVALIDATE THE WARRANTY AND RELEASE THE MANUFACTURER OF ALL LIABILITY.

INFORMATION REGARDING NOISE

THE A-WEIGHTED SOUND PRESSURE LEVEL MEASURED ON AN IDENTICAL SAMPLE MACHINE WAS CONSTANT AND LESS THAN 70 DB (A)

SAFETY PRECAUTIONS

THE MACHINE, ALBEIT COMPLIANT WITH SAFETY REQUIREMENTS LAID DOWN BY ELECTRICAL, MECHANICAL AND HYGIENIC STANDARDS OF REFERENCE, MAY CONSTITUTE A HAZARD IF:

- USED FOR SCOPES AND IN CONDITIONS OTHER THAN THOSE INTENDED BY THE MANUFACTURER.
- THE ROLLER PROTECTIONS ARE TAMPERED WITH.
- INSTRUCTIONS ARE NOT FOLLOWED REGARDING: INSTALLATION - START-UP - USE - MAINTENANCE.

BEFORE USING THE EQUIPMENT, IT IS MANDATORY TO INSTALL THE PROVIDED ROLLER SAFETY PROTECTIONS AS PER THE ATTACHED INSTRUCTIONS. THE PLASTIC SAFETY PROTECTIONS ARE DESIGNED TO PROTECT THE OPERATOR AGAINST CRUSHING AND THE MANUFACTURER DECLINES EVERY RESPONSIBILITY ARISING FROM THE NON-INSTALLATION OF SAFETY PROTECTIONS.

ATTENTION

IN ORDER TO PREVENT HAZARDOUS CONDITIONS AND/OR POSSIBLE INJURY CAUSED BY: ELECTRICAL CURRENTS, MECHANICAL PARTS, FIRE OR CAUSES OF A HYGIENIC NATURE, THE FOLLOWING SAFETY PRECAUTIONS MUST BE FOLLOWED.

- A OPERATOR WORKSTATIONS MUST BE KEPT CLEAN AND TIDY. DISORDER GENERATES THE RISK OF ACCIDENTS.
- B EVALUATE ENVIRONMENTAL CONDITIONS. DO NOT USE THE MACHINE IN HUMID, WET CONDITIONS OR IN THE CASE OF INSUFFICIENT LIGHTING, NEAR FLAMMABLE LIQUIDS OR GASES.
- C KEEP CHILDREN AND UNAUTHORISED PERSONS AWAY. DO NOT ALLOW THEM TO APPROACH THE MACHINE OR THE WORKSTATION.
- D USE THE MACHINE ONLY WITH THE RATED POWER AND ONLY FOR ITS INTENDED USE. THE MACHINE WILL WORK BETTER AND MORE SAFELY IF IT IS NOT OVERLOADED.
- E WEAR APPROPRIATE CLOTHING. DO NOT WEAR LOOSE CLOTHING OR HANGING ACCESSORIES THAT MAY GET CAUGHT IN MOVING PARTS. USE NON-SLIP SHOES. FOR HYGIENIC AND SAFETY REASONS, USE A HAIR NET AND HAND GLOVES.
- F PROTECT THE POWER CORD. DO NOT PULL ON THE CORD TO DETACH THE PLUG FROM ITS SOCKET; DO NOT EXPOSE THE CORD TO HIGH TEMPERATURES, AVOID CONTACT WITH SHARP CORNERS, WATER OR SOLVENTS.
- G AVOID UNSAFE POSITIONS. TRY AND FIND THE MOST SUITABLE POSITION THAT GUARANTEES CONSTANT BALANCE.
- H ALWAYS PAY MAXIMUM ATTENTION. OBSERVE YOUR WORK. NEVER USE THE MACHINE WHEN DISTRACTED.
- I DETACH THE PLUG FROM THE SOCKET. AFTER EACH USE, BEFORE PERFORMING CLEANING OR MAINTENANCE OPERATIONS OR MOVING THE MACHINE.
- L UNSECURED EXTENSION CORDS. THESE MUST NOT BE USED.
- M CHECK THAT THE MACHINE IS NOT DAMAGED. BEFORE USING THE MACHINE, CAREFULLY CHECK THE EFFICIENCY OF THE SAFETY DEVICES. CHECK THAT MOVING PARTS ARE NOT BLOCKED, THAT THERE ARE NO DAMAGED PARTS, THAT ALL PARTS HAVE BEEN PROPERLY ASSEMBLED AND THAT ALL CONDITIONS THAT MAY INFLUENCE THE REGULAR OPERATION OF THE MACHINE ARE OPTIMAL.
- N HAVE THE MACHINE REPAIRED BY QUALIFIED PERSONNEL. REPAIRS MUST BE CARRIED OUT ONLY BY QUALIFIED PERSONNEL USING ORIGINAL SPARE PARTS. FAILURE TO FOLLOW THESE PRECAUTIONS MAY CONSTITUTE A HAZARD TO THE USER.
- O LABELS ARE SAFETY DEVICES, AND THEREFORE MUST ALWAYS BE PERFECTLY LEGIBLE. SHOULD THEY BECOME DAMAGED AND ILLEGIBLE, THEY MUST BE REPLACED.

MACHINE FEATURES

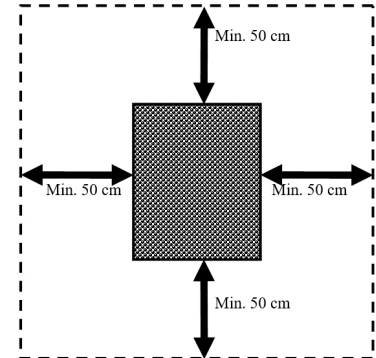
THE ROLLING MACHINE HAS BEEN DESIGNED AND DEVELOPED EXCLUSIVELY FOR FOOD-GRADE USE FOR THE COLD ROLLING OF DOUGH FOR BREAD-MAKING AND DESSERTS, FOR THE PURPOSE OF FACILITATING THE FORMATION OF DISCS FOR THE PREPARATION OF: PIZZAS, BREAD, FOCACCIA, CAKES, ETC., WITHOUT ALTERING THE FUNDAMENTAL PROPERTIES OF THE DOUGH.

INSTALLATION

USER PRECAUTIONS

THE ENVIRONMENTAL CONDITIONS OF THE LOCATION WHERE THE MACHINE IS INSTALLED MUST HAVE THE FOLLOWING CHARACTERISTICS:

- BE DRY
- WATER-BASED SOURCES OF HEAT LOCATED AT A SUITABLE DISTANCE
- SUITABLE VENTILATION AND LIGHTING COMPLIANT WITH OCCUPATIONAL STANDARDS.



THE SUPPORTING SURFACE MUST BE HORIZONTAL AND THERE MUST BE NO OBSTACLES OF ANY NATURE IN THE IMMEDIATE VICINITY OF THE MACHINE THAT MAY AFFECT ITS NORMAL VENTILATION.

IMPORTANT

IN ACCORDANCE WITH CURRENT REGULATIONS, THE ELECTRICAL SYSTEM MUST BE EQUIPPED WITH AN AUTOMATIC DIFFERENTIAL SWITCH HAVING CHARACTERISTICS SUITED TO THOSE OF THE MACHINE, IN WHICH THE CONTACT OPENING CLEARANCE IS AT LEAST 3 MM; AN EFFICIENT GROUNDING SYSTEM IS ALSO INDISPENSABLE.

CHECK THAT THE MAINS VOLTAGE AND FREQUENCY OF THE SYSTEM ARE COMPATIBLE WITH THE VALUES IN BOTH THE TECHNICAL FEATURES AND THE RATING PLATE ON THE BACK OF THE MACHINE.

INSTALLATION METHOD

IMPORTANT

ALL INSTALLATION AND MAINTENANCE OPERATIONS MUST BE CARRIED OUT BY CARRIED OUT BY QUALIFIED AND AUTHORISED PERSONNEL. THE SUPPLIER WILL NOT ACCEPT RESPONSIBILITY RESULTING FROM INCORRECT INSTALLATION OR TAMPERING.

THE MACHINE IS SUPPLIED IN CLOSED PACKAGING. AFTER REMOVING THE PACKAGING FROM THE MACHINE, PROCEED AS FOLLOWS:

- PLACE THE MACHINE IN ITS INTENDED LOCATION.
- REMOVE THE PROTECTIVE FILM WITHOUT USING TOOLS THAT MAY DAMAGE THE SURFACES.

NOTE

ALL PARTS OF THE PACKAGING MUST BE DISPOSED OF IN ACCORDANCE WITH REGULATIONS IN FORCE.

ELECTRICAL CONNECTION

THE MACHINE MUST BE CONNECTED TO THE ELECTRICAL MAINS BY WAY OF A POWER CORD FITTED WITH A PLUG. THE MAINS SOCKET MUST BE EASY TO ACCESS AND MUST NOT NEED TO BE MOVED. THE DISTANCE BETWEEN THE MACHINE AND THE SOCKET MUST BE SUCH AS TO AVOID ANY TENSIONING OF THE POWER CORD; MOREOVER THE CORD MUST NEVER BE STUCK UNDER THE FEET OF THE MACHINE.

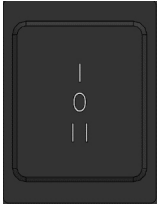
IMPORTANT

IT IS MANDATORY FOR THE SYSTEM TO HAVE A GROUNDING SYSTEM AND DIFFERENTIAL SWITCH IN ACCORDANCE WITH LEGISLATION IN FORCE.

START UP

CONTROL DEVICES

THE MACHINE IS EQUIPPED WITH THE FOLLOWING CONTROL DEVICES:



SWITCH I-O-2
POSITION I - MACHINE STARTED
POSITION O - MACHINE OFF
POSITION 2 - PEDAL OPERATION



TOUCH & GO CONTROL UNIT (FOR TOUCH & GO MODELS ONLY)
TIME SET - SELECTION OF OPERATING TIMES
STOP - MANUAL STOPPAGE OF ROLLERS



OPTIONAL PEDAL (STANDARD FOR RP)
PRESS - START ROLLERS
RELEASE - STOP ROLLERS

AFTER INSERTING THE POWER CORD INTO THE MAINS SOCKET, THE MACHINE IS READY FOR OPERATIONAL TESTING.

OPERATIONAL TEST VGDO07, VGDO08, VGDO06, VGDOI, VGDOI2:

TO START: PRESS THE SWITCH INTO POSITION I, THE MACHINE WILL START.

TO STOP: PRESS THE SWITCH INTO POSITION O, THE MACHINE WILL STOP.

OPERATIONAL TEST VGDO09, VGDOI, TOUCH & GO MODELS:

TO START: PRESS THE SWITCH ON THE SIDE INTO POSITION I. PRESS THE BLACK "SET TIME" BUTTON ON THE CONTROL UNIT TO SET THE OPERATING TIME FROM 10 TO 35 SECONDS; THE MACHINE IS READY FOR THE OPERATING STAGE.

THE ROLLERS WILL START AUTOMATICALLY WHEN THE DOUGH COMES INTO CONTACT WITH THE UPPER CHUTE.

TO STOP: THE ROLLERS STOP AUTOMATICALLY WHEN THE PREVIOUSLY SET TIME EXPIRES, OR WHEN THE "STOP" KEY IS PRESSED. MOVE THE SWITCH INTO POSITION "O" TO COMPLETELY TURN THE MACHINE OFF.

OPERATIONAL TEST OPTIONAL PEDAL (STANDARD IN RP):

PEDAL START: WHEN THE SWITCH IS PRESSED INTO POSITION 2, THE MACHINE WILL NOT START BUT WILL GO INTO STANDBY. WHEN THE PEDAL CONTROL IS LIGHTLY PRESSED, THE ROLLERS WILL START TO TURN AND THE MACHINE IS READY FOR USE.

PEDAL STOP: WHEN THE OPERATOR LIFTS THEIR FOOT OFF THE PEDAL, THE MACHINE STOPS. MOVE THE SWITCH INTO POSITION "O" TO COMPLETELY TURN THE MACHINE OFF.

FINALLY, RUN THE MACHINE ON EMPTY FOR ONE MINUTE, CHECK THAT IT OPERATES REGULARLY.

USE AND OPERATION

IMPORTANT: ALL ADJUSTMENTS MUST BE MADE WITH THE MACHINE AT A STANDSTILL.

THE RECOMMENDED ADJUSTMENTS ARE OF A PURELY INDICATIVE NATURE GIVEN THAT ADJUSTMENTS MUST BE DEFINED BY WAY OF TRIAL AND ERROR IN CONSIDERATION OF THE FOLLOWING VARIABLES: CHARACTERISTICS OF DOUGH, WEIGHT, THICKNESS, SIZE AND FORM OF THE DISC. THE MACHINE IS SUPPLIED WITH GENERAL ADJUSTMENTS SUITABLE FOR MEDIUM-WEIGHT PIZZAS.

REGULATION OF THICKNESS

TO SATISFY INDIVIDUAL NEEDS, THE MACHINE ALLOWS DIFFERENT DOUGH THICKNESSES BY TURNING THE KNOB, WHICH IS RELEASED BY PULLING ON THE BLACK POMMEL.

THE THICKNESS IS ADJUSTED DEPENDING ON THE DIRECTION OF ROTATION OF THE POMMEL:

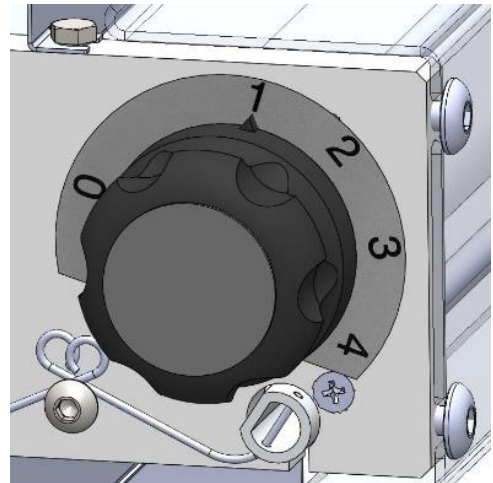
- MINIMUM THICKNESS: TURN IN AN ANTI-CLOCKWISE DIRECTION.
- MAXIMUM THICKNESS: TURN IN A CLOCKWISE DIRECTION.

FOR BEST RESULTS IT IS RECOMMENDED TO DIFFERENTIATE THE ADJUSTMENTS: E.G.: UPPER ROLLER OPENING 3.5 MM, LOWER ROLLER OPENING 2 MM.

NOTE: TO AVOID ANY INDENTATION OF THE DOUGH, PASS IT THROUGH THE ROLLERS ONCE ONLY. FORM REGULATION FOR ROLLING MACHINES.

FOR BEST DISC FORM THE SENSITIVITY OF THE BALANCE MUST BE ADJUSTED TO SUIT VARIATIONS IN THE WEIGHT OF THE DOUGH SO THAT ITS POSITION CAN BE CHANGED FROM VERTICAL TO PERFECTLY HORIZONTAL BEFORE ENTERING THE LOWER ROLLERS.

NOTE: MAKE SURE THE SMALL BALANCE, WHEN NOT BEING USED, IS ALWAYS IN THE HIGH POSITION.



SMALL BALANCE REGULATION

THIS ADJUSTMENT ALLOWS THE DOUGH ROTATION SPEED TO BE VARIED. BY TURNING THE LOCK SCREW IT IS POSSIBLE TO CHANGE THE POSITION OF THE COUNTERWEIGHT AND CONSEQUENTLY THE SENSITIVITY DEPENDING ON ITS POSITIONING IN ONE OF THE HOLES IN THE SMALL BALANCE.

MAXIMUM SENSITIVITY:

- POSITION THE COUNTERWEIGHT INSIDE THE HOLE;
- RECOMMENDED FOR LOW WEIGHTS.

MEDIUM SENSITIVITY:

- POSITION THE COUNTERWEIGHT AT THE CENTRE OF THE HOLE;
- RECOMMENDED FOR MEDIUM WEIGHTS.

MINIMUM SENSITIVITY:

- POSITION THE COUNTERWEIGHT OUTSIDE THE HOLE;
- RECOMMENDED FOR HIGH WEIGHTS.

AT THE END OF REGULATION, BLOCK THE COUNTERWEIGHT BY RE-TIGHTENING THE SCREW.

MACHINE USE

BEFORE STARTING EACH OPERATING CYCLE, CHECK THAT THE MACHINE IS PERFECTLY CLEAN, IN PARTICULAR THE SURFACES THAT COME INTO CONTACT WITH THE DOUGH. IF CLEANING IS NECESSARY, PROCEED IN ACCORDANCE WITH THE METHODS DESCRIBED IN THE



ATTENTION: DURING THE OPERATING STAGE IT IS STRICTLY PROHIBITED TO REMOVE THE SAFETY PROTECTIONS DUE TO THE PRESENCE OF MOVING PARTS THAT MAY CAUSE HANDS TO BE CRUSHED.

MODELS: VGDO07, VGDO08, VGDO06, VGDOII, VGDOI2

TO START: PRESS THE SWITCH INTO POSITION I, THE MACHINE WILL PLACE THE TWO PAIRS OF ROLLERS IN MOVEMENT AND IS READY FOR THE OPERATING STAGE. BEFORE INTRODUCING THE LIGHTLY FLOURED AND PREVIOUSLY PROOFED (AT LEAST 6-8 HOURS) BALL OF DOUGH INTO THE OPENING OF THE PROTECTION, SLIGHTLY SQUASH PART OF THE EDGE OF THE BALL TO FACILITATE ITS ENTRY INTO THE PAIR OF UPPER ROLLERS. WHEN THE DOUGH EXITS THE ROLLERS, ITS THICKNESS WILL BE SLIGHTLY REDUCED AND IT WILL HAVE AN OVAL SHAPE. THEN AS IT SLIDES ONTO THE BALANCE, IT WILL BE ROTATED IN A DIAGONAL DIRECTION BY ABOUT 90°, READY FOR THE NEXT PASSAGE THROUGH THE LOWER ROLLERS, FROM WHICH IT WILL EXIT IN A ROUGH DISC SHAPE, WHICH WILL THEN NEED TO BE PERFECTED BY HAND.

TO STOP: PRESS THE SWITCH INTO POSITION O.

MODELS: VGDO09, VGDOIO, TOUCH & GO

TO START: PRESS THE SWITCH ON THE SIDE INTO POSITION I
PRESS THE BLACK "SET TIME" BUTTON ON THE CONTROL UNIT TO SET THE OPERATING TIME FROM 10 TO 35 SECONDS; THE MACHINE IS READY FOR THE OPERATING STAGE.

BEFORE INTRODUCING THE LIGHTLY FLOURED AND PREVIOUSLY PROOFED (AT LEAST 6-8 HOURS) BALL OF DOUGH INTO THE OPENING OF THE PROTECTION, SLIGHTLY SQUASH PART OF THE EDGE OF THE BALL TO FACILITATE ITS ENTRY INTO THE PAIR OF UPPER ROLLERS.

THE ROLLERS WILL START AUTOMATICALLY WHEN THE DOUGH COMES INTO CONTACT WITH THE UPPER CHUTE.

WHEN THE DOUGH EXITS THE ROLLERS, ITS THICKNESS WILL BE SLIGHTLY REDUCED AND IT WILL HAVE AN OVAL SHAPE. THEN AS IT SLIDES ONTO THE BALANCE, IT WILL BE ROTATED IN A DIAGONAL DIRECTION BY ABOUT 90°, READY FOR THE NEXT PASSAGE THROUGH THE LOWER ROLLERS, FROM WHICH IT WILL EXIT IN A ROUGH DISC SHAPE, WHICH WILL THEN NEED TO BE PERFECTED BY HAND. THE ROLLERS WILL AUTOMATICALLY STOP TURNING AT THE END OF THE PREVIOUSLY SET TIME, OR WHEN THE "STOP" KEY IS PRESSED.

TO STOP: PRESS THE SWITCH ON THE SIDE INTO POSITION O.

USE OF PEDAL CONTROL

THE PEDAL CONTROL IS SUPPLIED ONLY IF REQUESTED BY THE CLIENT.
ITS START/STOP SCOPE, SUPPLEMENTAL TO THE FRONT CONTROLS, ALLOWS THE MACHINE TO BE KEPT RUNNING ONLY FOR THE TIME STRICTLY NECESSARY FOR ITS USE. THIS CONTROL IS CONNECTED TO THE MACHINE BY INSERTING THE PLUG AT THE END OF THE PEDAL POWER CORD INTO THE SOCKET ON THE SIDE OF THE MACHINE ITSELF.

TO START: WHEN THE SWITCH IS PRESSED INTO POSITION 2, THE MACHINE WILL NOT START BUT WILL GO INTO STANDBY. WHEN THE PEDAL CONTROL IS LIGHTLY PRESSED, THE ROLLERS WILL START TO TURN AND THE MACHINE IS READY FOR USE.

TO STOP: WHEN THE OPERATOR LIFTS THEIR FOOT OFF THE PEDAL, THE MACHINE STOPS.

MODEL: VGDO06

FUNCTIONS AND USE OF PEDAL CONTROL. THE PEDAL CONTROL PERFORMS SUPPLEMENTAL FUNCTIONS TO THE FRONT CONTROLS IN ADDITION TO ALLOWING OPERATION OF THE ROLLERS IN JOG MODE AND ONLY FOR THE TIME STRICTLY NECESSARY FOR ITS USE. THIS CONTROL IS CONNECTED TO THE MACHINE BY INSERTING THE PLUG AT THE END OF THE PEDAL POWER CORD INTO THE SOCKET ON THE SIDE OF THE MACHINE ITSELF.

MODEL: VGDOI, VGDOI2

FUNCTIONS AND USE OF PEDAL CONTROL. THE OPERATION IS THE SAME AS THE PREVIOUS MACHINES BUT THE ROLLER PAIR IS SINGLE.

USE FOR DISC FORMATION

AFTER MANUALLY TURNING THE MACHINE ON BY PRESSING THE SWITCH INTO POSITION 1, OR WITH THE PEDAL CONTROL IN POSITION 2, THE OPERATING STAGE CAN BEGIN.

BEFORE INTRODUCING THE LIGHTLY FLOURED AND PREVIOUSLY PROOFED (AT LEAST 6-8 HOURS) BALL OF DOUGH INTO THE OPENING OF THE PROTECTION, SLIGHTLY SQUASH PART OF THE EDGE OF THE BALL TO FACILITATE ITS ENTRY INTO THE PAIR OF UPPER ROLLERS, IN WHICH THE DOUGH THICKNESS WILL BE SLIGHTLY REDUCED, ASSUMING AN OVAL SHAPE.

WHEN THIS STEP IS ABOUT TO CONCLUDE, GUIDE THE DOUGH'S DESCENT USING YOUR HAND, MOVING IT FORWARD STEP BY STEP UNTIL IT IS COMPLETELY OUT, AFTER WHICH THE ROLLERS WILL STOP. TURN THE DOUGH IN A DIAGONAL DIRECTION BY ABOUT 90°, PREPARING IT FOR THE NEXT PASSAGE THROUGH THE PAIR OF LOWER ROLLERS, FROM WHICH IT WILL EXIT IN A ROUGH DISC SHAPE, WHICH WILL THEN NEED TO BE PERFECTED BY HAND.

USE FOR RECTANGLE FORMATION

PLACE A CLEAN, SUITABLY SIZED TRAY UNDER THE MACHINE, COMPATIBLE WITH THE WIDTH OF THE SUPPORTING FEET.

TURN THE MACHINE ON, START THE ROLLERS, THEN INTRODUCE THE LIGHTLY FLOURED AND PREVIOUSLY PROOFED (AT LEAST 6-8 HOURS) DOUGH INTO THE OPENING OF THE PROTECTION, SLIGHTLY SQUASHING PART OF THE EDGE OF THE BALL TO FACILITATE ITS ENTRY INTO THE PAIR OF ROLLERS, IN WHICH THE DOUGH THICKNESS WILL BE SLIGHTLY REDUCED.

AFTER ITS EXIT, FOR MEDIUM AND HIGH WEIGHTS, IT IS ESSENTIAL TO PROCEED IN JOG MODE, MANUALLY WIDENING THE DOUGH IN PREPARATION FOR ITS SUBSEQUENT PASSAGE THROUGH THE ROLLERS FROM WHICH THE FORMED DOUGH WILL BE LAID IN THE TRAY.

IMPORTANT: TURN THE MACHINE OFF AT THE END OF THE OPERATING STAGE.

MAINTENANCE

ATTENTION: BEFORE PERFORMING ANY TYPE OF MAINTENANCE WORKS, INCLUDING CLEANING, ADOPT THE FOLLOWING PRECAUTIONS:

- MAKE SURE THE EQUIPMENT IS DISCONNECTED FROM THE ELECTRICAL MAINS (DETACH THE PLUG FROM THE POWER SOCKET), MAKING SURE THE POWER SUPPLY CANNOT BE ACCIDENTALLY REACTIVATED;
- MAKE SURE THE EQUIPMENT HAS COMPLETELY COOLED;
- USE THE PERSONAL PROTECTIVE EQUIPMENT REQUIRED BY REGULATIONS IN FORCE;
- ALWAYS OPERATE USING APPROPRIATE TOOLS;
- AT THE END OF MAINTENANCE / REPAIR / CLEANING OPERATIONS, BEFORE PLACING THE EQUIPMENT BACK INTO OPERATION, REINSTALL ALL PROTECTIONS AND SAFETY DEVICES;

CLEANING

ATTENTION: UNDER NO CIRCUMSTANCES MAY NON-FOOD-GRADE ABRASIVE OR CORROSIVE CHEMICAL PRODUCTS BE USED. IT IS STRICTLY PROHIBITED TO USE JETS OF WATER, VARIOUS TOOLS, ROUGH OR ABRASIVE MEANS, SUCH AS STEEL SCOURERS, SPONGES, ETC., WHICH MAY DAMAGE THE SURFACES AND IN PARTICULAR COMPROMISE THE HYGIENIC SAFETY.

CLEANING MUST BE CARRIED OUT AFTER EVERY USE IN COMPLIANCE WITH HYGIENIC REGULATIONS IN FORCE AND IN SUCH A WAY AS TO PROTECT THE FUNCTIONS OF THE MACHINE, PROCEEDING AS FOLLOWS:

- USING A SUITABLE BRUSH, FIRST REMOVE ANY FLOUR AND DOUGH RESIDUE;
- REMOVE THE SMALL BALANCE AND CHUTES FROM THEIR HOUSINGS;
- RELEASE THE SPRINGS AND SLIDE OUT THE DOUGH SCRAPERS;
- TURN THE ADJUSTMENT LEVERS SO THAT THE ROLLERS ARE IN THEIR MAXIMUM OPEN POSITION;
- THOROUGHLY CLEAN THE MACHINE AND ALL ITS PARTS, INCLUDING THE DISMANTLED COMPONENTS, USING A SPONGE OR CLOTH DAMPENED WITH WATER AND A NEUTRAL FOOD-GRADE DETERGENT;
- RINSE AS NEEDED TO REMOVE ALL TRACES OF THE DETERGENT;
- DRY WITH FOOD-GRADE PAPER TOWEL, THEN WIPE DOWN FIRST THE SURFACES IN CONTACT WITH THE DOUGH, THEN THE ENTIRE MACHINE WITH A SOFT AND CLEAN CLOTH DAMPENED WITH A SPECIFIC DISINFECTANT FOR FOOD-GRADE MACHINES.

SHAFT AND ROLLER LUBRICATION

THE SHAFTS AND ROLLERS MUST BE LUBRICATED ON AN ANNUAL BASIS. AFTER REMOVING THE PROTECTIONS, CHUTES, SPRINGS AND DOUGH SCRAPERS;

- REMOVE THE SCREWS AND DISMANTLE FIRST THE BACK PANEL AND THEN THE SUPPORTS;
- FINALLY, REMOVE THE ROLLERS AND JOINTS;
- THOROUGHLY CLEAN ALL PARTS WITH A SPONGE, WARM WATER AND FOOD-GRADE DETERGENT, RINSE AS NEEDED AND DRY WITH PAPER TOWEL;
- LUBRICATE BOTH THE SHAFTS AND THE HOLES OF THE ROLLERS USING A SUFFICIENT QUANTITY OF PARAFFIN OIL;
- REASSEMBLE AND SECURE ALL PARTS, CARRYING OUT THE STEPS IN THE REVERSE ORDER WITH RESPECT TO THEIR DISASSEMBLY.

ATTENTION: AT THE END OF MAINTENANCE / REPAIR / CLEANING OPERATIONS, BEFORE PLACING THE EQUIPMENT BACK INTO SERVICE, CHECK THAT ALL PARTS AND RELATIVE PROTECTIONS HAVE BEEN PROPERLY POSITIONED AND SECURED;

TROUBLESHOOTING

PROBLEM	CAUSE	SOLUTION
THE MACHINE WON'T START	<ol style="list-style-type: none">1. NO MAINS ELECTRICAL POWER2. THE PEDAL CONTROL IS CONNECTED TO THE MACHINE.	<ol style="list-style-type: none">1. CHECK: THE GENERAL CONTACTOR, SOCKET, PLUG AND POWER CORD.2. PRESS THE PEDAL CONTROLS

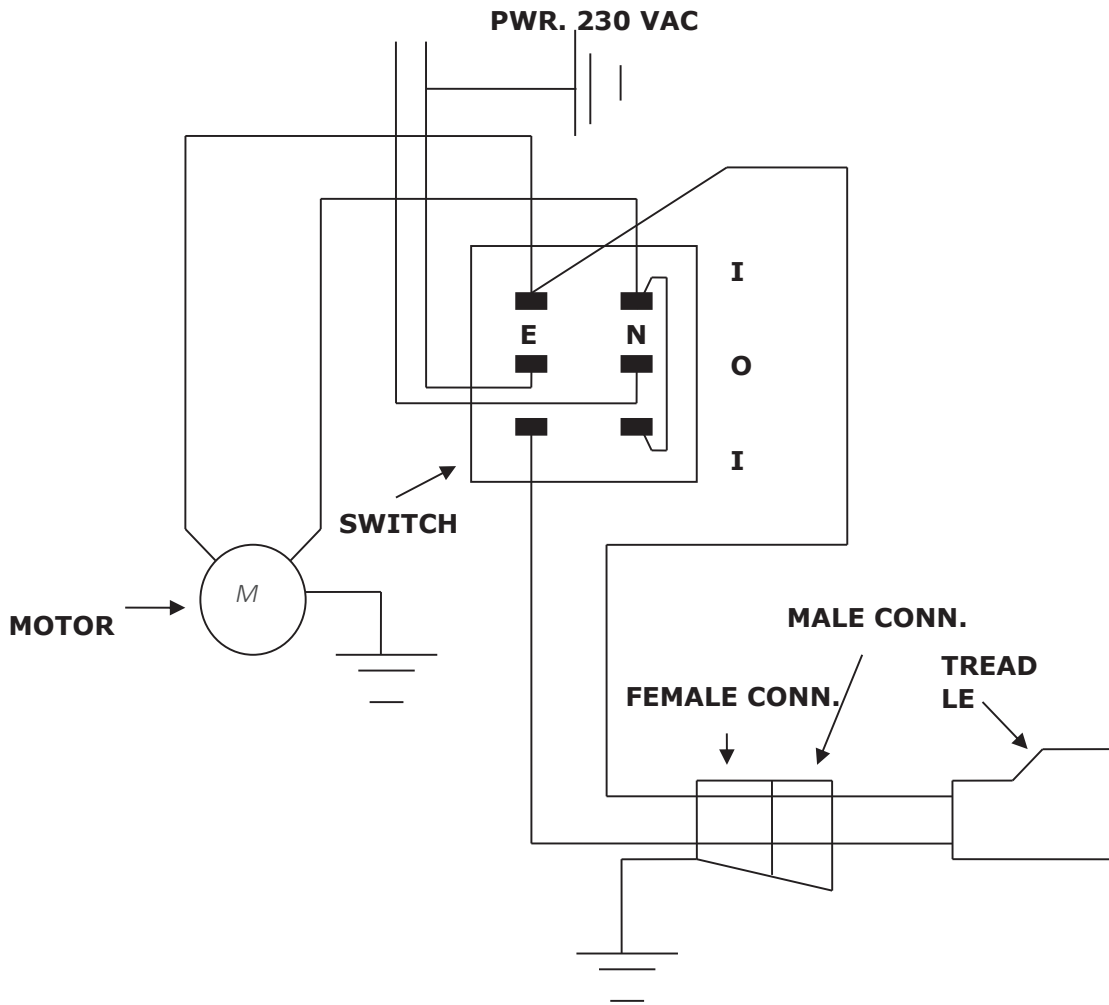
DEMOLITION AND DISPOSAL

ATTENTION: THE DEMOLITION AND DISPOSAL OF THE MACHINE IS THE EXCLUSIVE ONUS AND RESPONSIBILITY OF THE OWNER, WHO MUST ACT IN ACCORDANCE WITH REGULATIONS IN FORCE IN THEIR OWN COUNTRY IN REGARDS TO SAFETY, RESPECT AND PROTECTION OF THE ENVIRONMENT.

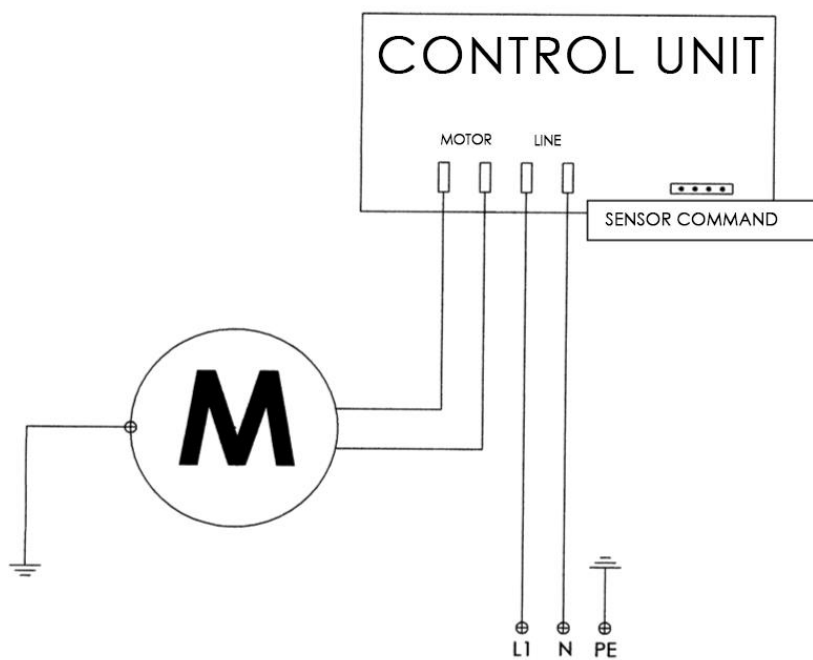
WHEN DEMOLISHING THE MACHINE, THE PROVISIONS OF REGULATIONS IN FORCE MUST NECESSARILY BE COMPLIED WITH. TO FACILITATE RECYCLING OPERATIONS, SORT THE DIFFERENT PARTS COMPOSING THE MACHINE INTO THE DIFFERENT TYPES OF CONSTRUCTION MATERIALS (PLASTIC, COPPER, IRON, ETC.).

WIRING DIAGRAMS

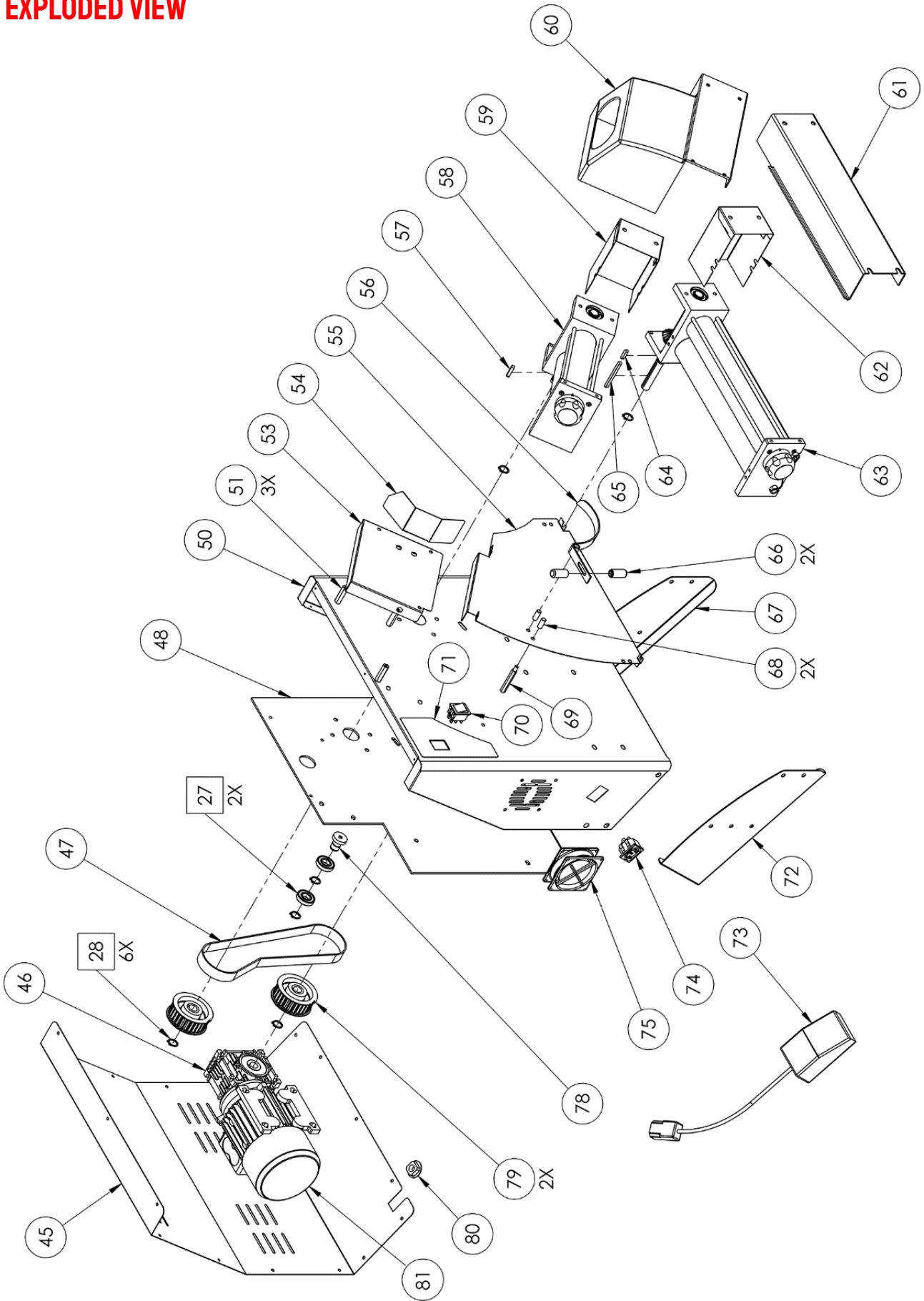
MODELS VGDO07, VGDO08, VGDO06, VGDOI AND VGDOI2



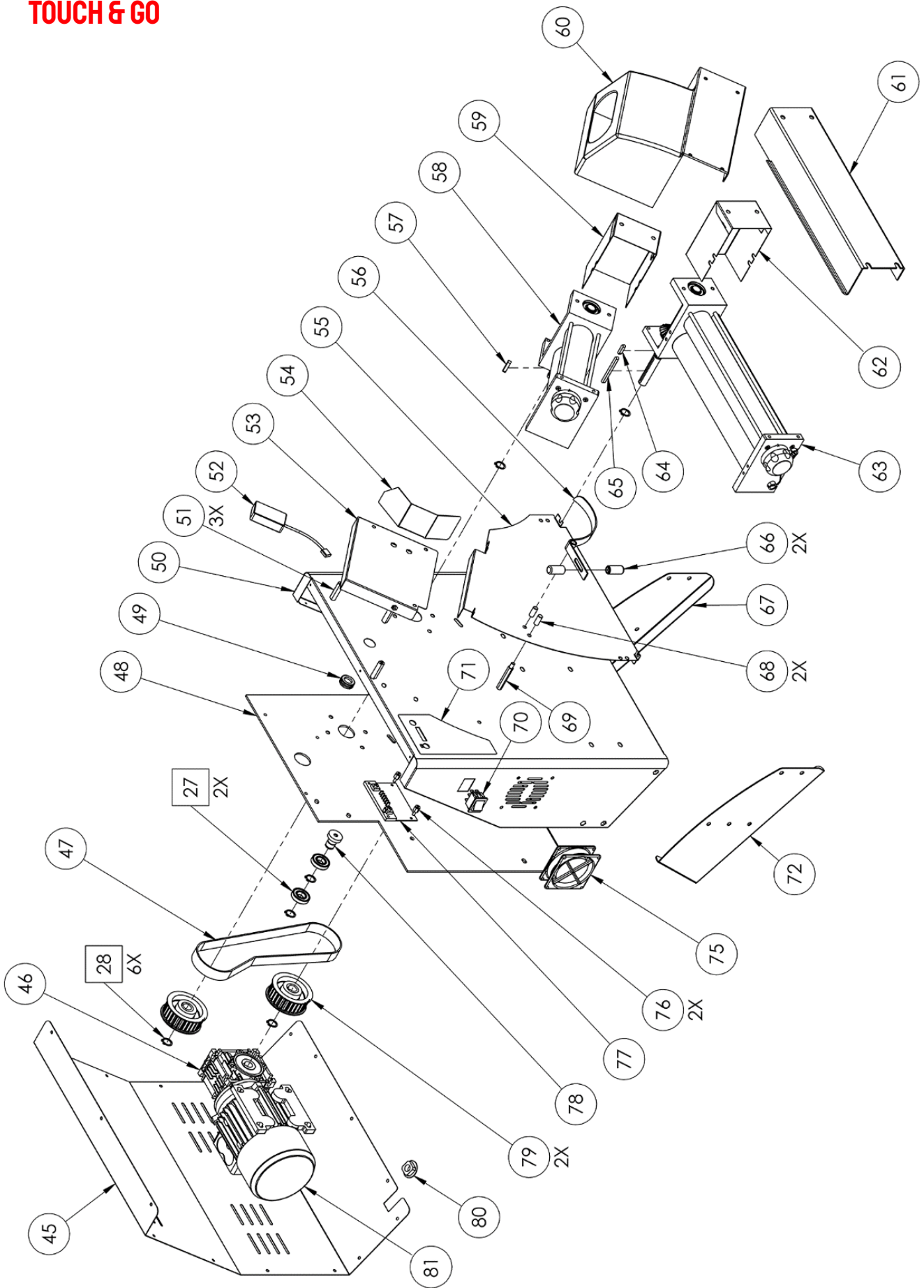
MODELS: TOUCH AND GO

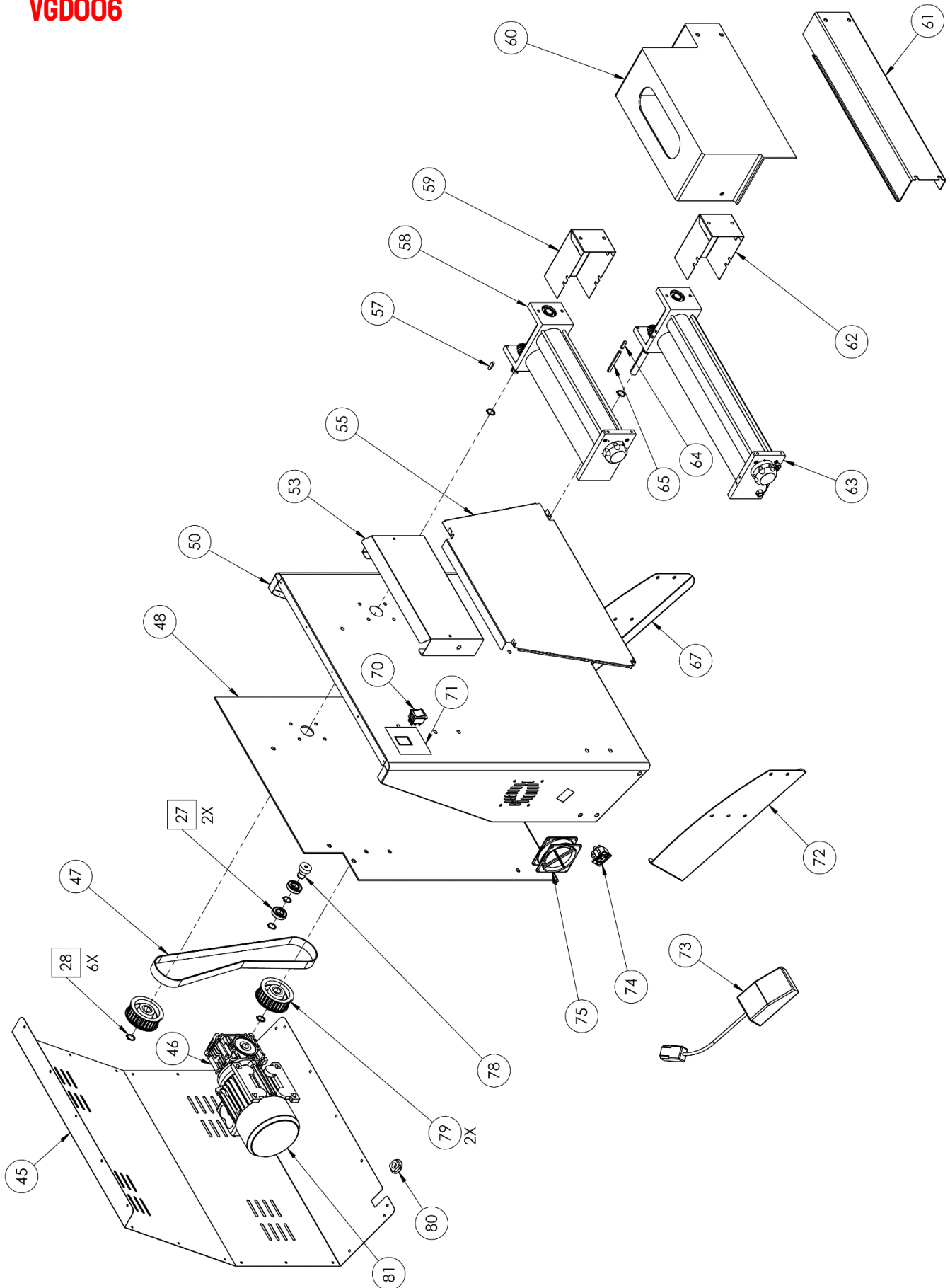


EXPLODED VIEW

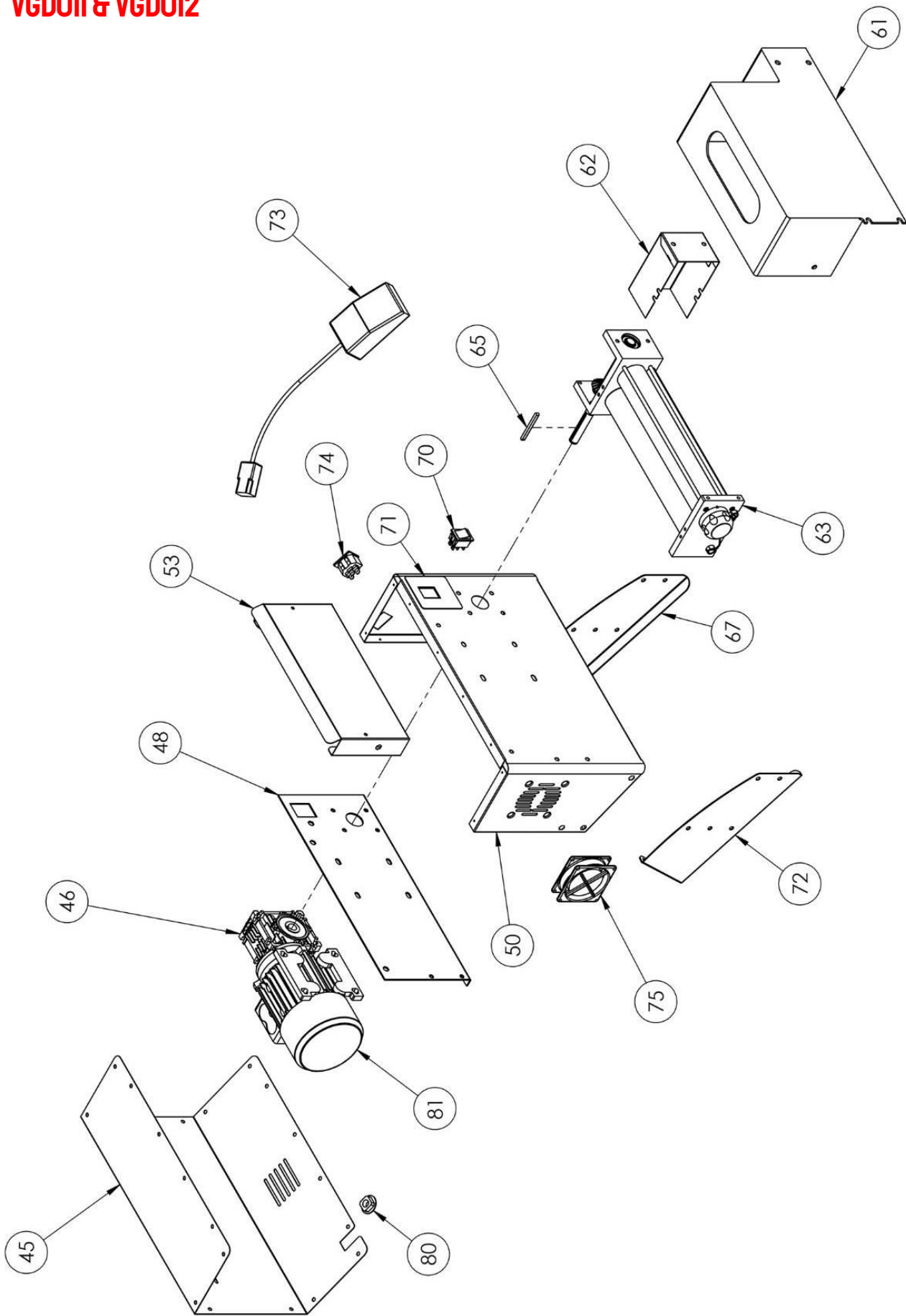


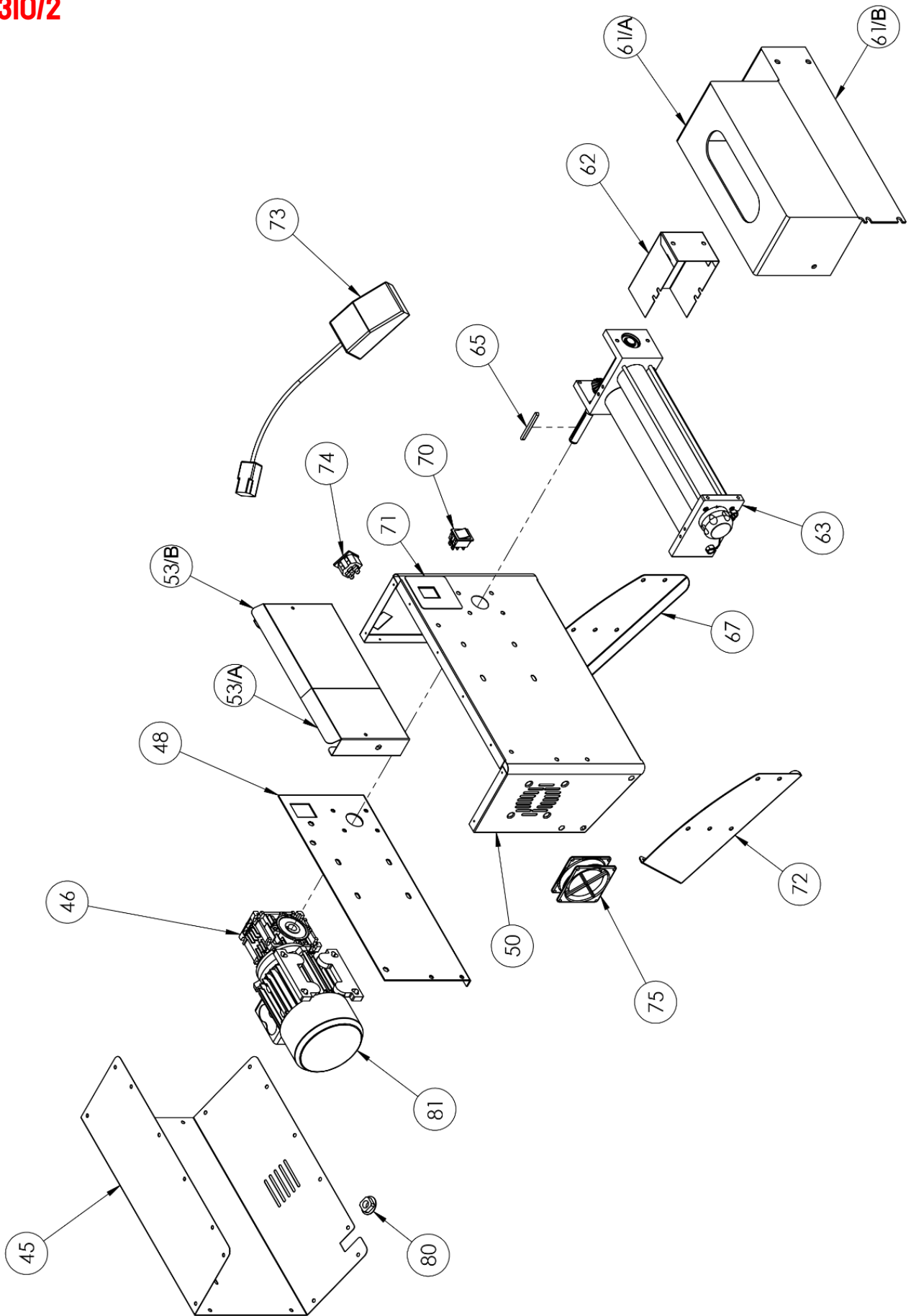
TOUCH & GO



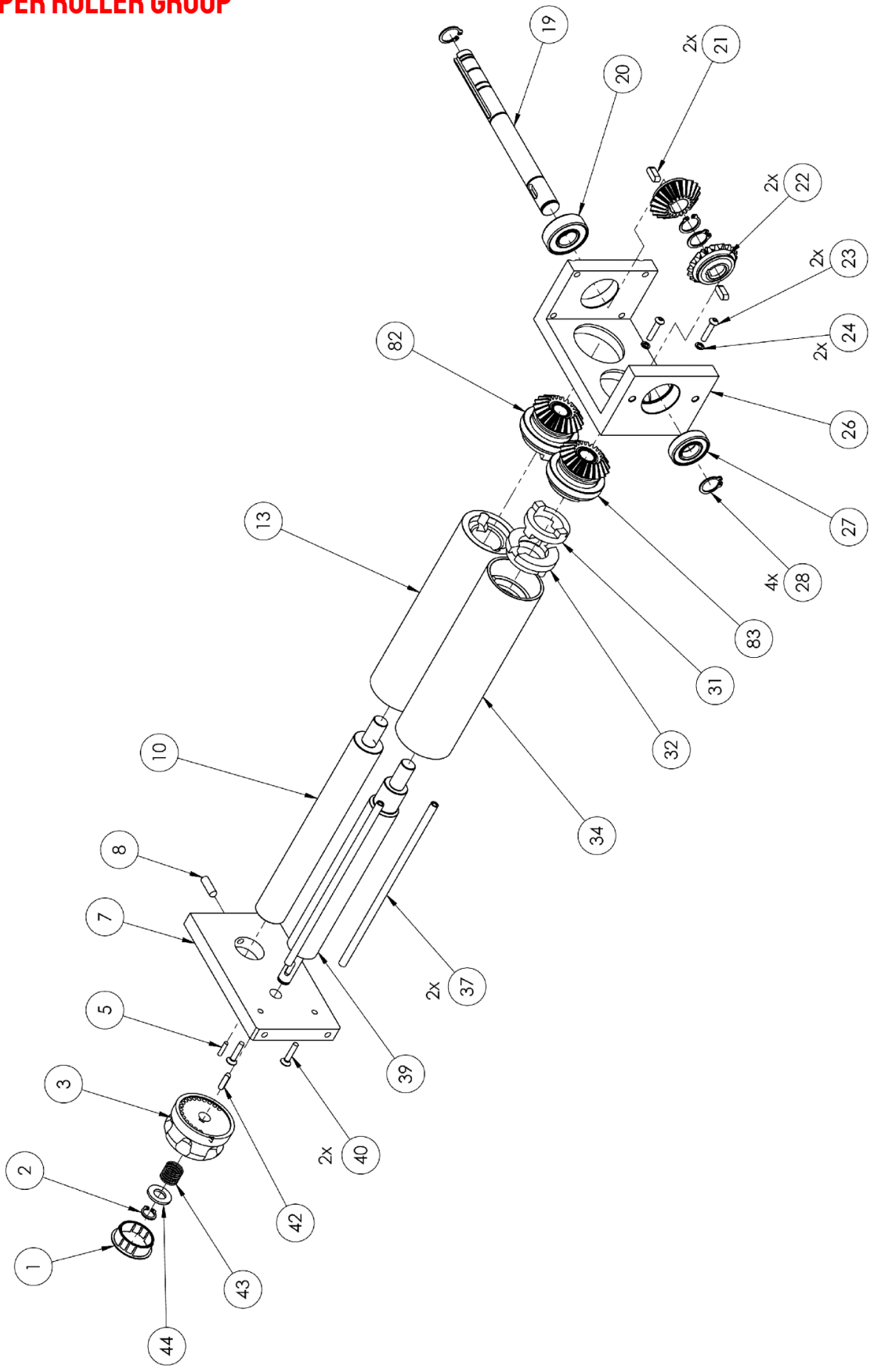


VGDOI1 & VGDOI2

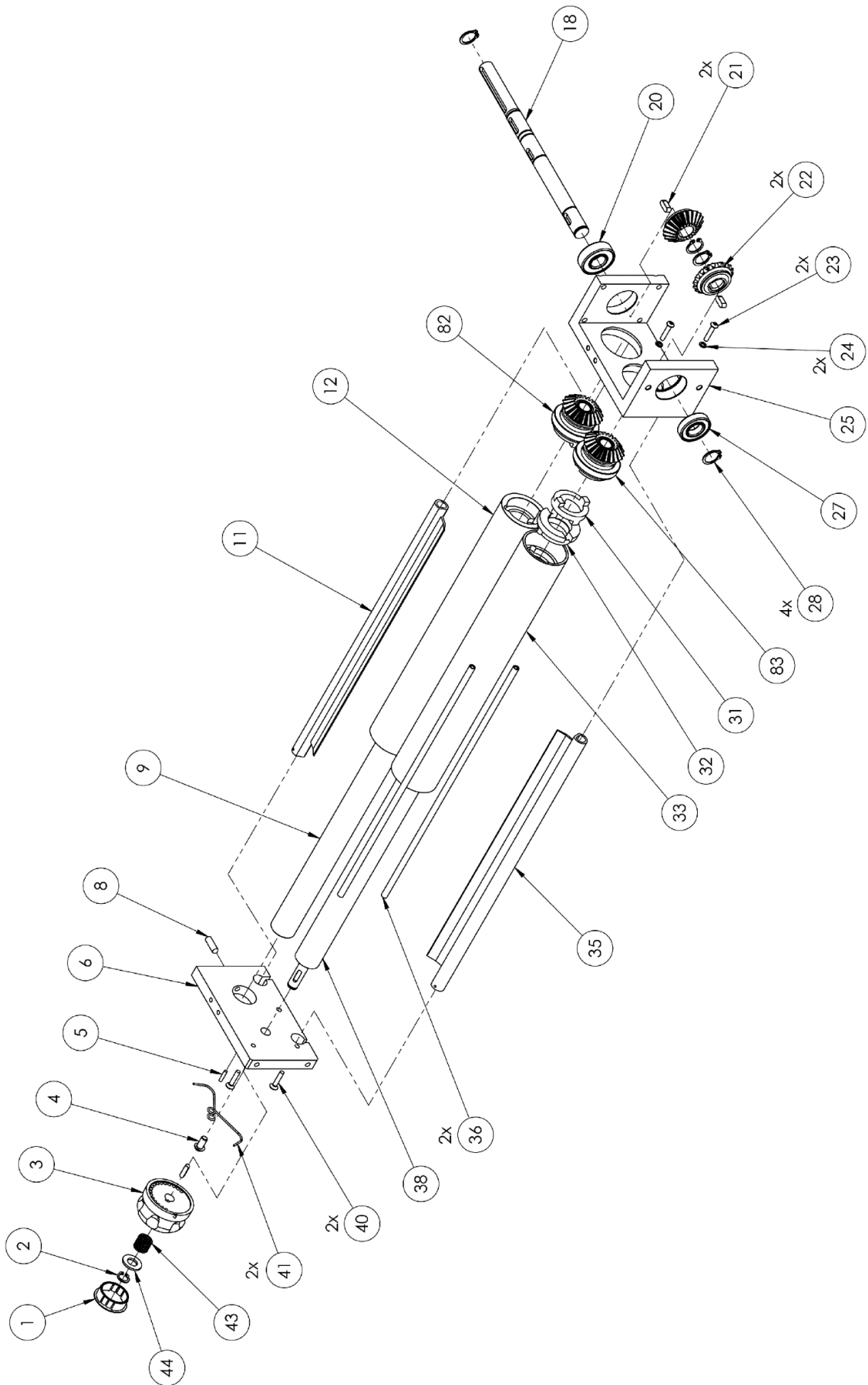




UPPER ROLLER GROUP



LOWER ROLLER GROUP



	VGD007	VGD009	VGD008	VGD010		VGD006	VGD011		VGD012
1	5T100010	5T100010	5T100010	5T100010		5T100010	5T100010		5T100010
2	5S500001	5S500001	5S500001	5S500001		5S500001	5S500001		5S500001
3	3P020001	3P020001	3P020001	3P020001		3P020001	3P020001		3P020001
4	5V500020	5V500020	5V500020	5V500020		5V500020	5V500020		5V500020
5	5S510005	5S510005	5S510005	5S510005		5S510005	5S510005		5S510005
6	3S010032	3S010032	3S010032	3S010032		3S010032	3S010032		3S010032
7	3S010027	3S010027	3S010027	3S010027		3S010038	-		-
8	5G510001	5G510001	5G510001	5G510001		5G510001	5G510001		5G510001
9	3A010042	3A010042	3A010047	3A010047		3A010054	3A010042		3A010054
10	3A010032	3A010032	3A010037	3A010037		3A010042	-		-
11	3R020005	3R020005	3R020010	3R020010		3R020003	3R020005		3R020003
12	3R010010	3R010010	3R010020	3R010020		3R010030	3R010010		3R010030
13	3R010001	3R010001	3R010005	3R010005		3R010015	-		-
17	5A010001	5A010001	5A010001	5A010001		5A010001	5A010001		5A010001
18	3A010072	3A010072	3A010072	3A010072		3A010072	3A010076		3A010076
19	3A010071	3A010071	3A010071	3A010071		3A010081	-		-
20	5C030000	5C030000	5C030000	5C030000		5C030000	5C030000		5C030000
21	5L500017	5L500017	5L500017	5L500017		5L500017	5L500017		5L500017
22	5I200005	5I200005	5I200005	5I200005		5I200005	5I200005		5I200005
23	5V500019	5V500019	5V500019	5V500019		5V500019	5V500019		5V500019
24	5R500028	5R500028	5R500028	5R500028		5R500028	5R500028		5R500028
25	3S010019	3S010019	3S010019	3S010019		3S010019	3S010019		3S010019
26	3S010016	3S010016	3S010016	3S010016		3S010021	-		-
27	5C030007	5C030007	5C030007	5C030007		5C030007	5C030007		5C030007
28	5S500010	5S500010	5S500010	5S500010		5S500010	5S500010		5S500010
31	5G010005	5G010005	5G010005	5G010005		5G010005	5G010005		5G010005
32	5G010001	5G010001	5G010001	5G010001		5G010001	5G010001		5G010001
33	3R010050	3R010050	3R010060	3R010060		3R010070	3R010050		3R010070
34	3R010040	3R010040	3R010045	3R010045		3R010055	-		-
35	3R020025	3R020025	3R020030	3R020030		3R020023	3R020025		3R020023
36	3T050035	3T050035	3T050025	3T050025		3T050020	3T050035		3T050020
37	3T050040	3T050040	3T050030	3T050030		3T050035	-		-
38	3A010011	3A010011	3A010016	3A010016		3A010024	3A010011		3A010024
39	3A010002	3A010002	3A010006	3A010006		3A010011	-		-
40	5V500017	5V500017	5V500017	5V500017		5V500017	5V500017		5V500017
41	5M500005	5M500005	5M500005	5M500005		5M500005	5M500005		5M500005
42	5L500010	5L500010	5L500010	5L500010		5L500010	5L500010		5L500010
43	5M500001	5M500001	5M500001	5M500001		5M500001	5M500001		5M500001
44	5R500010	5R500010	5R500010	5R500010		5R500010	5R500010		5R500010

	VG007	VG009	VG008	VG010		VG007	VG011		VG012
47	5C020010	5C020010	5C020015	5C020015		5C020015	-		-
52	-	5S010070	-	5S010070		-	-		-
56	4B010001	4B010001	4B010005	4B010005		-	-		-
57	5L500031	5L500031	5L500031	5L500031		5L500020	-		-
58	7G010166	7G010166	7G010170	7G010170		7G010174	-		-
59	4C010070	4C010070	4C010070	4C010070		4C010075	-		-
60	4P020026	4P020026	4P020031	4P020031		4P020036	-		-
61/A	4P020006	4P020006	4P020015	4P020015		4P020045	4P020037		4P020044
61/B									
62	4C010070	4C010070	4C010070	4C010070		4C010070	4C010070		4C010070
63	7G010168	7G010168	7G010172	7G010172		7G010176	7G010160		7G010164
64	5L500020	5L500020	5L500020	5L500020		5L500020	-		-
65	5L500024	5L500024	5L500024	5L500024		5L500024	5L500024		5L500001
66	3C010001	3C010001	3C010001	3C010001		-	-		-
68	3P030001	3P030001	3P030001	3P030001		-	-		-
70	5I100001	5I100001	5I100001	5I100001		5I100001	5I100001		5I100001
73	5P020001	-	5P020001	-		5P020001	5P020001		5P020001
74	5P200001	-	5P200001	-		5P200001	5P200001		5P200001
75	5V050005	5V050005	5V050005	5V050005		5V050005	5V050005		5V050005
77	-	5C150030	-	5C150030		-	-		-
78	3T300010	3T300010	3T300010	3T300010		3T300010	-		-
79	3P010010	3P010010	3P010010	3P010010		3P010010	-		-
80	5P100015	5P100015	5P100015	5P100015		5P100015	5P100015		5P100015
81+46 220V 50/60HZ	5M010004	5M010004	5M010004	5M010004		5M010004	5M010004		5M010004
81+46 110V 50/60HZ	5M010016	5M010016	5M010016	5M010016		5M010016	5M010016		5M010016
81+46 240V 50HZ	5M010014	5M010014	5M010014	5M010014		5M010014	5M010014		5M010014
82	7I010003	7I010003	7I010003	7I010003		7I010003	7I010003		7I010003
83	7I010004	7I010004	7I010004	7I010004		7I010004	7I010004		7I010004

TECHNICAL DATA

Description	Unit	VG007 VG009	VG008 VG010	VG006	VG011	VG012
Machine dimension	cm	L 47,5 P 37,5 H 66	L 58,5 P 43,5 H 79	L 66,5 P 43,5 H 71,5	L 48 P 33,5 H 43	L 65 P 34,5 H 43
Net weight	Kg	30	36	41	18	27
Operatine temperature	°C	+15 ÷ +45				
Dough weight	gr	80÷210	210÷700	220÷1000	80÷210	210÷700
Pizza diameter	cm	14÷29	26÷40	26÷45	14÷29	26÷40
Alimentation tension	Vac	220 (1 Ph + N + T) 50 /60 Hz (Standard) 240 (1 Ph + N + T) 50 Hz 110 (1 Ph + N + T) 50/60 Hz				
Absorbed power	W	250				
Motor power	W	240				



VGDO06 · CONTENDER DOUGH ROLLER - PIZZA FORMER. 45CM - 18 INCH

VGDO07 · CONTENDER DOUGH ROLLER - PIZZA FORMER. 30CM - 12 INCH

VGDO08 · CONTENDER DOUGH ROLLER - PIZZA FORMER. 40CM - 16 INCH

VGDO11 · CONTENDER SINGLE DOUGH ROLLER - PIZZA FORMER. 30CM - 12 INCH

VGDO12 · CONTENDER SINGLE DOUGH ROLLER - PIZZA FORMER. 45CM - 18 INCH



STEP UP TO THE PLATE