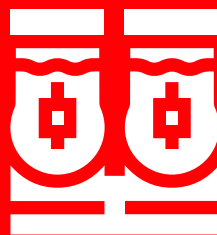


CONTENDER

STEP UP TO THE PLATE



SLUSH MACHINE USER MANUAL

SLU001 | SLU002

CONTENTS

I. INTRODUCTION	4
2. SAFETY INSTRUCTIONS	4
3. INSTALLATION PROCEDURES	5
4. PRODUCT PREPARATION AND APPLICATION	6
5. CLEANING, SANITISATION, AND MAINTENANCE	6
6. DISASSEMBLING THE PARTS	7
7. RE-ASSEMBLING THE PARTS	8
8. SETTING THE DENSITY OF THE BEVERAGE	11
9. BUTTON CONFIGURATIONS	11
10. ELECTRICAL DIAGRAMS	12
II. TECHNICAL SPECIFICATIONS	13
EXPLODED VIEWS AND SPARE PART LIST	14
TROUBLESHOOTING	20
NOTES	21



INTRODUCTION

DEAR CUSTOMER,

THANK YOU FOR CHOOSING OUR PRODUCT.

IMPORTANT!

OUR COMPANY IS NOT RESPONSIBLE FOR ANY NEGATIVE RESULTS AND DAMAGES THAT MAY OCCUR IN CASE THE SECURITY MEASURES MENTIONED IN THIS MANUAL ARE NOT IMPLEMENTED PROPERLY.

THE BEVERAGE YOU WILL PREPARE SHOULD HAVE SUGAR RATIO OF BETWEEN 12% AND 17%. IN SNOW MODE YOU SHOULD ONLY PREPARE SLUSH THOUGH YOU CAN PREPARE SHERBET, AYRAN AND OTHER BEVERAGES IN SHERBET MODE.

IN THE BUILDINGS, FACILITIES AND SIMILAR PLACES WHERE THE APPLIANCE IS TO BE CONNECTED, THERE MUST BE AN ELECTRICAL INSTALLATION IN ACCORDANCE WITH THE LOCAL REGULATIONS AND ALL NECESSARY MEASURES SHOULD BE TAKEN TO ENSURE THE SAFETY OF HUMAN LIFE AND PROPERTY.

1. INTRODUCTION

1. DO NOT INSTALL, OPERATE, REPAIR OR INTERFERE IN ANY WAY, WITHOUT READING THE MANUAL COMPLETELY.
2. FOR PROPER OPERATION OF THE DISPENSER, THE ROOM TEMPERATURE MUST BE BETWEEN + 5°C AND + 32°C
3. USE THE DEVICE ONLY TO COOL THE SPECIFIED TYPES OF BEVERAGES.
4. STAFF WHO IS RESPONSIBLE FOR DAILY OPERATIONS MUST BE CAREFULLY TRAINED ACCORDING TO THE PROCEDURES RELATED TO CLEANING, DISMANTLING, ASSEMBLY, AND OPERATIONS.

2. SAFETY INSTRUCTIONS



ELECTRICAL

1. THE DISPENSER SHOULD BE CONNECTED TO A GROUND NETWORK AS SPECIFIED IN CURRENT REGULATIONS, DO NOT USE AN EXTENSION CORD.
2. CHECK THE SUPPLY VOLTAGE OF THE DISPENSER FROM THE LABEL ON THE PANEL. DO NOT CONNECT THE DISPENSER TO AN ELECTRICITY OUTLET OTHER THAN WITH THE SPECIFIED SUPPLY VOLTAGE.
3. IF THE POWER CABLE IS DAMAGED, IT MUST BE REPLACED BY A MANUFACTURER'S AUTHORIZED SERVICE OR BY A SIMILARLY QUALIFIED PERSON.
4. DISCONNECT THE APPLIANCE FROM THE MAINS BEFORE ANY INTERVENTION.



OPERATIONAL

1. **DO NOT RUN THE DISPENSER WITHOUT READING THIS MANUAL.**
2. **DO NOT RUN THE DISPENSER UNLESS ALL PANELS ARE MOUNTED AND FIXED.**
3. **DO NOT PUT OBJECTS OR FINGER IN PANELS, LOUVERS AND FAUCET OUTLET.**
4. **THE DISPENSER IS NOT SUITABLE FOR OUTDOOR USE. MAKE SURE THE DISPENSER IS NOT PLACED AND DOES NOT OPERATE UNDER DIRECT SUNLIGHT.**
5. **THE DISPENSER SHOULD BE INSTALLED IN AN UPRIGHT POSITION.**
6. **IF YOU DID NOT USE THE DISPENSER FOR A LONG TIME BEFORE RUNNING, FIRST UNPLUG THE DISPENSER, CLEAN AND SANITIZE THE BOWL AND BOTTOM COMPARTMENT.**
7. **AT BOTTOM COMPARTMENT, ELECTRICALLY OPERATED INTERNAL PARTS SHOULD NEVER BE WASHED WITH WATER.**
8. **THE DISPENSER SHOULD NOT BE OPERATED BY CHILDREN OR USED AS A TOY.**
9. **DO NOT USE THE DEVICE OTHER THAN FOR ITS INTENDED USE.**
10. **DURING THE PREPARATION AND CLEANING PROCESS, USE GLOVES SUITABLE FOR HANDLING FOOD.**

3. INSTALLATION PROCEDURES

1. **REMOVE THE DEVICE FROM THE TRANSPORT BOX AND SAVE THE BOX FOR LATER USE.**
2. **CHECK FOR THE DAMAGE OCCURRED DURING TRANSPORTATION. IF ANY DAMAGE EXISTS ON THE BODY OR ANY SPARE PART PLEASE CONTACT THE FORWARDER.**
3. **IN CASE YOUR DISPENSER HAS NOT BEEN KEPT STRAIGHT DURING SHIPPING, KEEP IT UPRIGHT AND UNPLUGGED FOR AT LEAST ONE HOUR BEFORE STARTING THE INSTALLATION PROCEDURES.**
4. **CONNECT THE DISPENSER TO THE MAINS SO THAT THE CABLE IS EASILY ACCESSIBLE.**
5. **PLACE THE DISPENSER ONTO A SURFACE THAT CAN HOLD THE TOTAL WEIGHT OF THE DISPENSER AND THE BEVERAGE.**
6. **PLACE THE DISPENSER ON A DRY AND FLAT SURFACE. MAKE SURE THERE IS ENOUGH SPACE OF A MINIMUM OF 15 CM ON EACH SIDE FOR PROPER AIR CIRCULATION.**
7. **THERE SHOULD NOT BE ANY HEAT GENERATING SOURCE NEAR THE DISPENSER AS IT MIGHT AFFECT THE COOLING PERFORMANCE.**
8. **YOU CAN ADJUST THE HEIGHT WITH THE ADJUSTABLE FEET UNDER THE DISPENSER.**
9. **THE DISPENSER IS NOT DELIVERED PRE-STERILIZED. PLEASE READ SECTION 5 BEFORE STARTING THE MACHINE TO APPLY THE SANITIZATION PROCESS.**
10. **THE DISPENSER HAS TO BE DISASSEMBLED, CLEANED AND STERILIZED ACCORDING TO DETAILS SPECIFIED IN PARAGRAPH 6 BEFORE THE INITIAL USE.**

4. PRODUCT PREPARATION AND APPLICATION

PREPARING YOUR PRODUCT:

1. PRODUCT MAY BE Poured INTO THE BOWL ONLY WHEN THE MACHINE IS OFF AND UNPLUGGED.
2. DILUTE AND MIX THE CONCENTRATE WITH WATER IN A SUITABLE CONTAINER, FOLLOWING THE CONCENTRATE MANUFACTURER'S DIRECTIONS. THE MIXTURE OBTAINED MUST HAVE A MINIMUM SUGAR CONTENT OF 13 BRIX – A LOWER CONCENTRATION MAY RESULT IN MALFUNCTION AS WELL AS DAMAGE.
3. POUR THE PRODUCT INTO THE BOWL, TAKING CARE, NOT TO OVERFILL THE MAX LEVEL INDICATED.
4. THERE ARE SOME MOVING PARTS INSIDE THE BOWL, WHICH MAY CAUSE INJURIES; TURN OFF AND UNPLUG THE MACHINE BEFORE CARRYING OUT ANY OPERATION INSIDE THE BOWL.

5. CLEANING, SANITISATION AND MAINTENANCE

CLEANING:

IMPORTANT!

COMPONENTS SHOULD NOT BE WASHED IN THE DISHWASHER. ALSO, DO NOT DRY ANY COMPONENT IN AN OVEN OR ANY MICROWAVE MACHINE AFTER THE CLEANING PROCESS.

THE SANITIZING PROCESS SHOULD BE APPLIED TO THE MACHINE BEFORE YOU FIRST START UP THE MACHINE. IT IS RECOMMENDED TO APPLY DAILY.

1. THE MACHINE MUST BE BROUGHT TO POSITION "O" BEFORE ANY CLEANING OR MAINTENANCE OPERATION BEGINS. MAKE SURE THAT THE MACHINE IS UNPLUGGED.
2. PREPARE AT LEAST 5 LITRES OF WATER AND CLEANING SOLUTION. APPLY THE BOWLS UNTIL BE SURE THAT THERE IS NO DIRT ON THE SURFACE OF THE BOWLS.
3. GRANITA MACHINE SHOULD BE CLEANED REGULARLY. THIS WILL PROLONG THE LIFE OF YOUR MACHINE AND INCREASE THE QUALITY OF YOUR GRANITE.

SANITISING:

IMPORTANT!

THE SANITISING PROCESS SHOULD BE APPLIED TO THE MACHINE BEFORE YOU FIRST START UP THE MACHINE. IT IS RECOMMENDED TO APPLY DAILY.

1. I. WASH YOUR HAND WITH AN ANTIBACTERIAL SOAP.
2. WASH ALL THE PARTS PROPERLY UNTIL MAKE SURE THAT THERE IS NOT ANY CONTAMINANT ON THE PARTS.
3. IT IS RECOMMENDED THAT EACH BOWL SHOULD BE CLEANED EACH TIME IT IS BEING RE-FILLED OR ONCE PER TWO DAYS. ALL PARTS ARE DESIGNED ESPECIALLY FOR EASY CLEANING.

6. DISASSEMBLING THE PARTS

IMPORTANT!

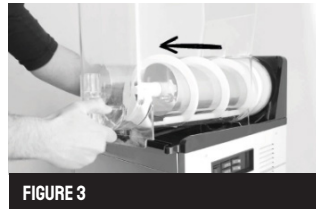
MAKE SURE TO TURN OFF THE MACHINE AND EMPTY THE BOWL THROUGH THE TAP.

REMOVING THE TAP:



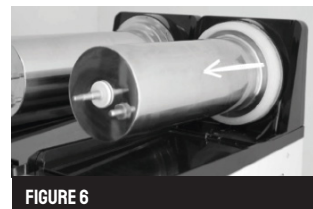
1. THE TAP SHOULD BE CLEANED REGULARLY TO PREVENT BACTERIA FORMATION AND TO GET RID OF WASTE FOOD ACCUMULATION.
2. AS SHOWN IN FIGURE 1, PRESS THE TAP FROM BOTH SIDES AND PULL IT UPWARDS, THE TAP WILL COME OUT OF ITS PLACE.

REMOVING THE BOWL:



1. REMOVE THE BOWL COVER.
2. HOLD THE TANK AND LIFT THE FRONT SIDE UP. SEE FIGURE 2.
3. AFTER PULLING OUT THE FRONT OF THE WALL, PULL THE BOWL TOWARDS YOU. SEE FIGURE 3.
4. IF YOU HAVE ANY DIFFICULTY WHEN REMOVING THE BOWL, RENEW THE GASKET LUBRICATION WITH A PROPER LUBRICANT (VASELINE, LUBRI-FILM, FOOD GRADE GREASE)

REMOVING THE HELIX MIXER:



5. TURN THE NUT ANTI CLOCKWISE. FIGURE 4.
6. PULL OUT THE WHITE HELIX MIXER TOWARDS YOURSELF. FIGURE 5.
7. REMOVE THE TANK GASKET. FIGURE 6

DRIP TRAY CLEANING:

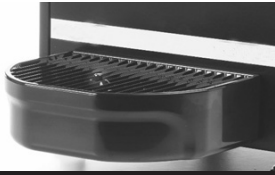


FIGURE 7

1. THE DRIP TRAY SHOULD BE CLEANED PROPERLY.
2. WHEN THE RED WARNING PIN IS ALL THE WAY UP, THE TRAY NEEDS TO BE EMPTIED.
3. WASH THE DRIP TRAY IN WARM WATER AND DRY BEFORE INSTALLING BACK IN PLACE.

PERIODIC CONDENSER CLEANING:



FIGURE 8



FIGURE 9



FIGURE 10



FIGURE 11

IMPORTANT!

THE CONDENSER NEEDS TO BE CLEANED PERIODICALLY IN ORDER FOR THE MACHINE TO MAINTAIN EFFICIENT COOLING PERFORMANCE.

1. UNPLUG THE MACHINE AND MAKE SURE THAT THERE IS NO WORKING COMPONENT BEFORE STARTING TO CLEAN THE CONDENSER.
2. LOOSEN THE SCREWS OF THE SIDE COVER WITH A SCREWDRIVER.
3. UNSCREW THE CONDENSER COVER AND TAKE THE COVER OFF. CONDENSER COVER IS PLACED BACK SIDE AT THE SLUSH MONO MODEL (FIGURE 9) AND RIGHT SIDE AT SLUSH TWIN AND SLUSH TRIPLE MODELS (FIGURE 10).
4. CLEAN THE CONDENSER WITH A VACUUM CLEANER. FIGURE 10.
5. IF YOU SEE SOME WRETTCHED FINS FIX THE ALUMINIUM FINS WITH A BRUSH. IT ALLOWS THE AIRFLOW TO PASS EASILY AND INCREASE THE CONDENSER CAPACITY. FIGURE 11.
6. IT IS RECOMMENDED TO APPLY THIS PROCESS ONCE PER 3 MONTHS.

7. RE-ASSEMBLING THE PARTS

1. MAKE SURE THAT ALL THE WASHED PIECES ARE THOROUGHLY CLEANED.
2. ALL WASHED PARTS MUST BE CAREFULLY ASSEMBLED.
3. NON-LUBRICATED PARTS REDUCE THE LIFETIME AND OPERATING PERFORMANCE OF THE MACHINE.

ASSEMBLING THE HELIX MIXER:

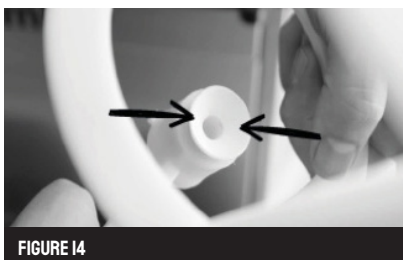


1. LUBRICATE THE BOWL GASKET AND THE PLACE WHERE THE GASKET SITS ON THE COOLING CYLINDER. THEN PLACE THE BOWL GASKET ON TO THE COOLING CYLINDER AS SHOWN IN FIGURE 12.
2. ATTACH THE GASKET TO THE WHITE HELIX MIXER AS SHOWN IN FIGURE 13.

IMPORTANT!

MAKE SURE TO LUBRICATE THE HELIX MIXER GASKET EVERY TIME YOU ASSEMBLE THE MIXER.

3. APPLY THE VASELINE ON THE GASKET. FIGURE 14
4. REPLACE THE WHITE HELIX MIXER ON THE CYLINDER PLATE AND PUSH FORWARD UNTIL IT SITS FIRMLY TO THE BACK END OF THE PLATE. FIGURE 15.

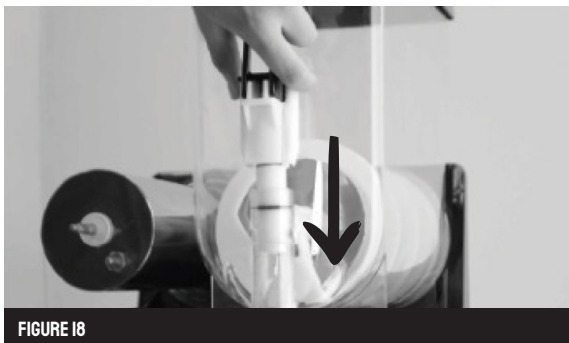


ASSEMBLING THE BOWL:



1. REPLACE THE BOWL ON THE CYLINDER PLATE AND HELIX BY LIFTING IT UP AND PUSHING FORWARD. IT WOULD BE EASIER TO HOLD THE DISPENSER'S METAL BODY AS YOU ASSEMBLE THE BOWL. FIGURE 16. IF YOU HAVE ANY DIFFICULTY WHEN REMOVING THE BOWL, RENEW THE GASKET LUBRICATION WITH A PROPER LUBRICANT (VASELINE, LUBRI-FILM, FOOD GRADE GREASE)
2. PAY ATTENTION NOT TO HOLD THE BOWL SHOULDER INTO THE GROOVE ON THE TOP TABLE. THIS WOULD CAUSE A LOOSE FIT AND LEAKAGE. FIGURE 17.

ASSEMBLING THE TAP:



- I. PRESS THE PLUNGER OF THE TAP INTO THE TAP CHANNEL IN THE BOWL AS SHOWN IN FIGURE 18 AND PRESS IT DOWN UNTIL IT FITS THE SHOULDER.

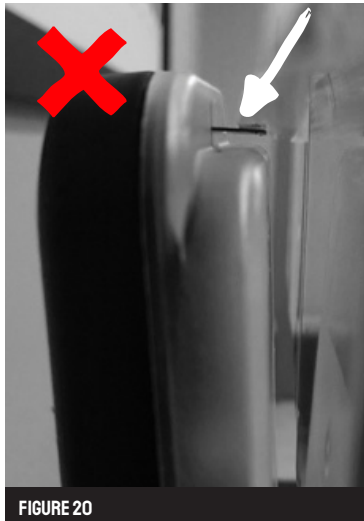
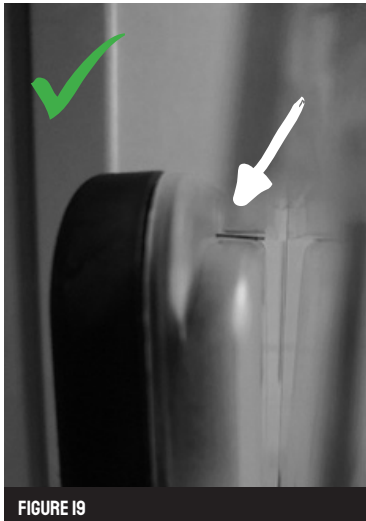
IMPORTANT!

MAKE SURE TO LUBRICATE TAP PISTON AND O-RINGS WITH VASELINE OR FOOD GRADE LUBRICANT EVERY TIME YOU ASSEMBLE THE TAP.

ASSEMBLING THE BOWL COVER:

IMPORTANT!

FOLLOW THE INSTRUCTIONS BELOW CAREFULLY WHEN YOU MOUNT THE BOWL COVER. OTHERWISE THE DISPENSER WON'T COOL THE BOWL.



- I. IN ALLURE MODELS, THERE IS SAFETY SYSTEM THAT STOPS THE MIXER FUNCTION WHEN THE USER OPENS THE BOWL COVER. BOWL COVER SITS ON THE SWITCH WHICH CONTROLS THIS SAFETY OPERATION. WHEN YOU PLACE THE BOWL COVER, PAY ATTENTION TO SIT THE COVER PROPERLY ON TO THE BOWL. FIGURE 19-20.

8. SETTING THE DENSITY OF THE BEVERAGE



FIGURE 21



FIGURE 22

1. USER CAN ADJUST THE BEVERAGE'S SOFTNESS OR DENSITY BY TURNING THE SCREW AS SHOWN IN FIGURE 21 AND 22.
2. IF YOU CHOOSE TO DRINK ICIER BEVERAGE, TURN THE SCREW COUNTER-CLOCKWISE AND YOU WILL SEE THE INDICATOR GOES DOWNWARD TO PLUS (+) SIDE.
3. IF YOU CHOOSE TO DRINK A SOFTER BEVERAGE, TURN THE SCREW CLOCKWISE AND YOU WILL SEE THE INDICATOR GOES UPWARD TO MINUS (-) SIDE.

ELECTRICAL DIAGRAMS

9. BUTTON CONFIGURATIONS

SLUSH SINGLE:

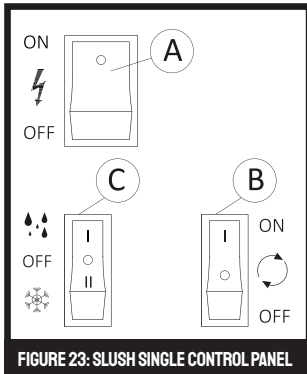


FIGURE 23: SLUSH SINGLE CONTROL PANEL

SLUSH TWIN:

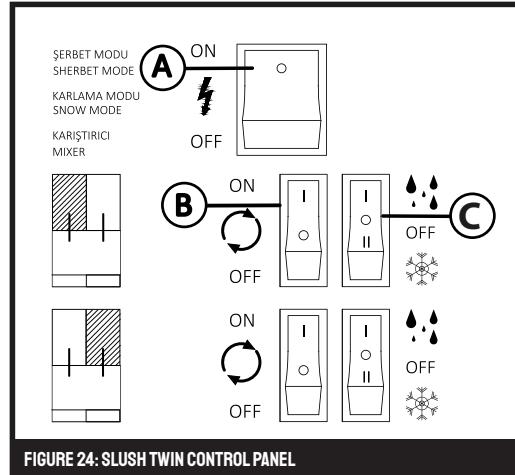


FIGURE 24: SLUSH TWIN CONTROL PANEL

SLUSH TRIPLE:

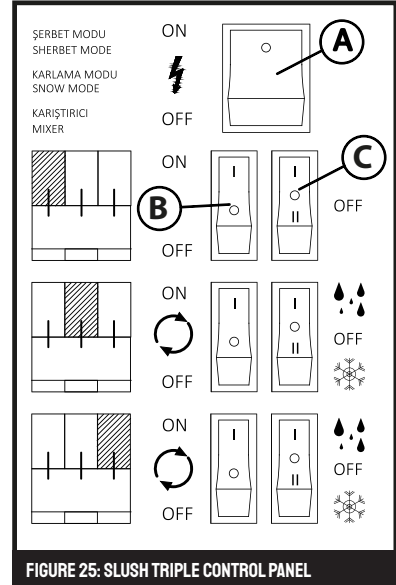


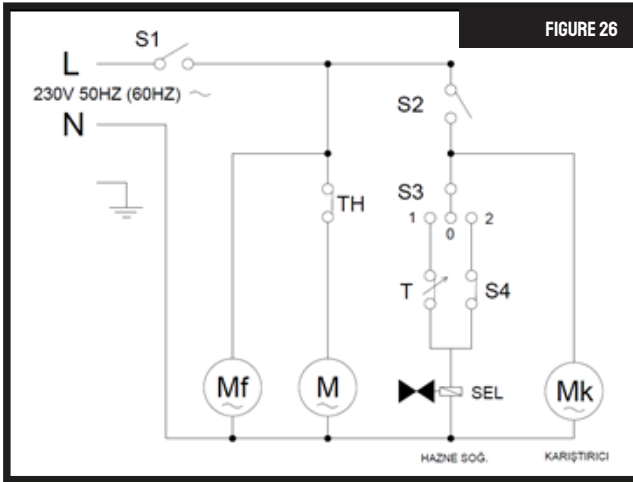
FIGURE 25: SLUSH TRIPLE CONTROL PANEL

USE OF CONTROL PANEL:

1. A - MAIN SWITCH B - MIXER SWITCH C - MODE SWITCH D - ILLUMINATING SWITCH
2. MAIN SWITCH (A) IS THE SWITCH THAT ALL THE ELECTRICAL COMPONENTS CONNECTED TO. WHEN IT IS OPEN, ELECTRICITY COMES TO DISPENSER, COMPRESSOR AND FAN STARTS TO RUN. FOR COOLING MODES, FOLLOW THE INSTRUCTIONS BELOW.
3. MIXER SWITCH (B) AND MOD SWITCH (C) ARE CONNECTED SERIES AND WHEN MIXER SWITCH IS ON MIXER STARTS TO RUN.
4. MOD SWITCH CONTROLS SLUSH AND SHERBET MODE. TO COOL THE BOWL IN DESIRED MODE TURN THE MODE SWITCH TO POSITION; (II) FOR SLUSH MODE, (I) FOR SHERBET MODE.
5. IF EITHER MIXER (B) OR MOD (C) SWITCH IS OFF, THEN COOLING WON'T BE ACTIVE.
6. IN ALLURE MODELS, USER CAN ACTIVATE THE FRONT PANEL AND BOWL LIGHTNING WITH ILLUMINATING SWITCH(D).

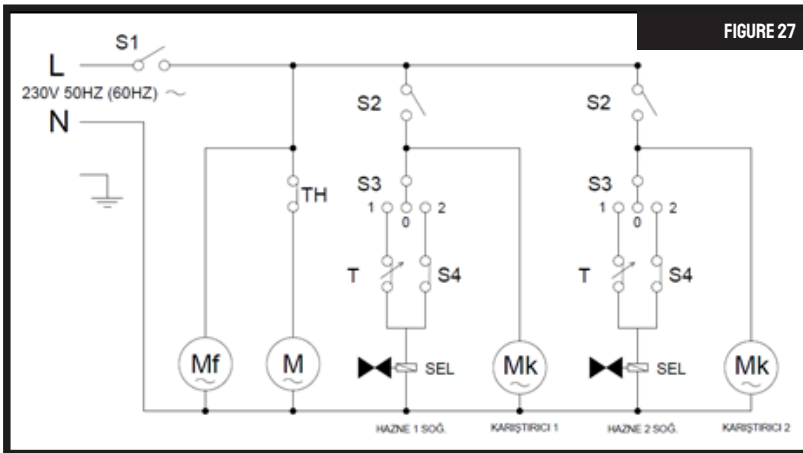
IO. ELECTRICAL DIAGRAMS

SLUSH SINGLE:



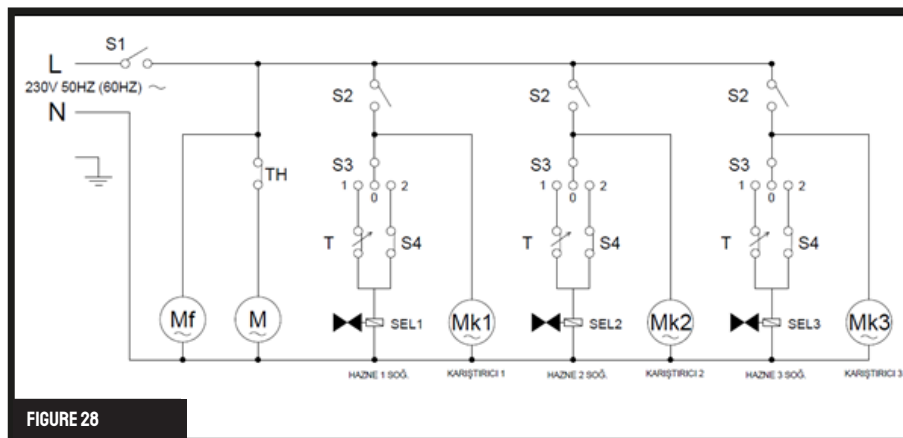
- SI: MAIN SWITCH
- S2: MIXER SWITCH
- S3: 3-CONTACT SWITCH
- S4: DEFROST SWITCH
- T: THERMOSTAT
- TH: COMPRESSOR THERMIC RELAY
- M: COMPRESSOR
- MF: FAN MOTOR
- MK: MIXER MOTOR
- SEL: SOLENOID VALVE

SLUSH TWIN:



- SI: MAIN SWITCH
- S2: MIXER SWITCH
- S3: 3-CONTACT SWITCH
- S4: DEFROST SWITCH
- T: THERMOSTAT
- TH: COMPRESSOR THERMIC RELAY
- M: COMPRESSOR
- MF: FAN MOTOR
- MK: MIXER MOTOR
- SEL: SOLENOID VALVE

SLUSH TRIPLE:



- SI: MAIN SWITCH
- S2: MIXER SWITCH
- S3: 3-CONTACT SWITCH
- S4: DEFROST SWITCH
- T: THERMOSTAT
- TH: COMPRESSOR THERMIC RELAY
- M: COMPRESSOR
- MF: FAN MOTOR
- MK: MIXER MOTOR
- SEL: SOLENOID VALVE

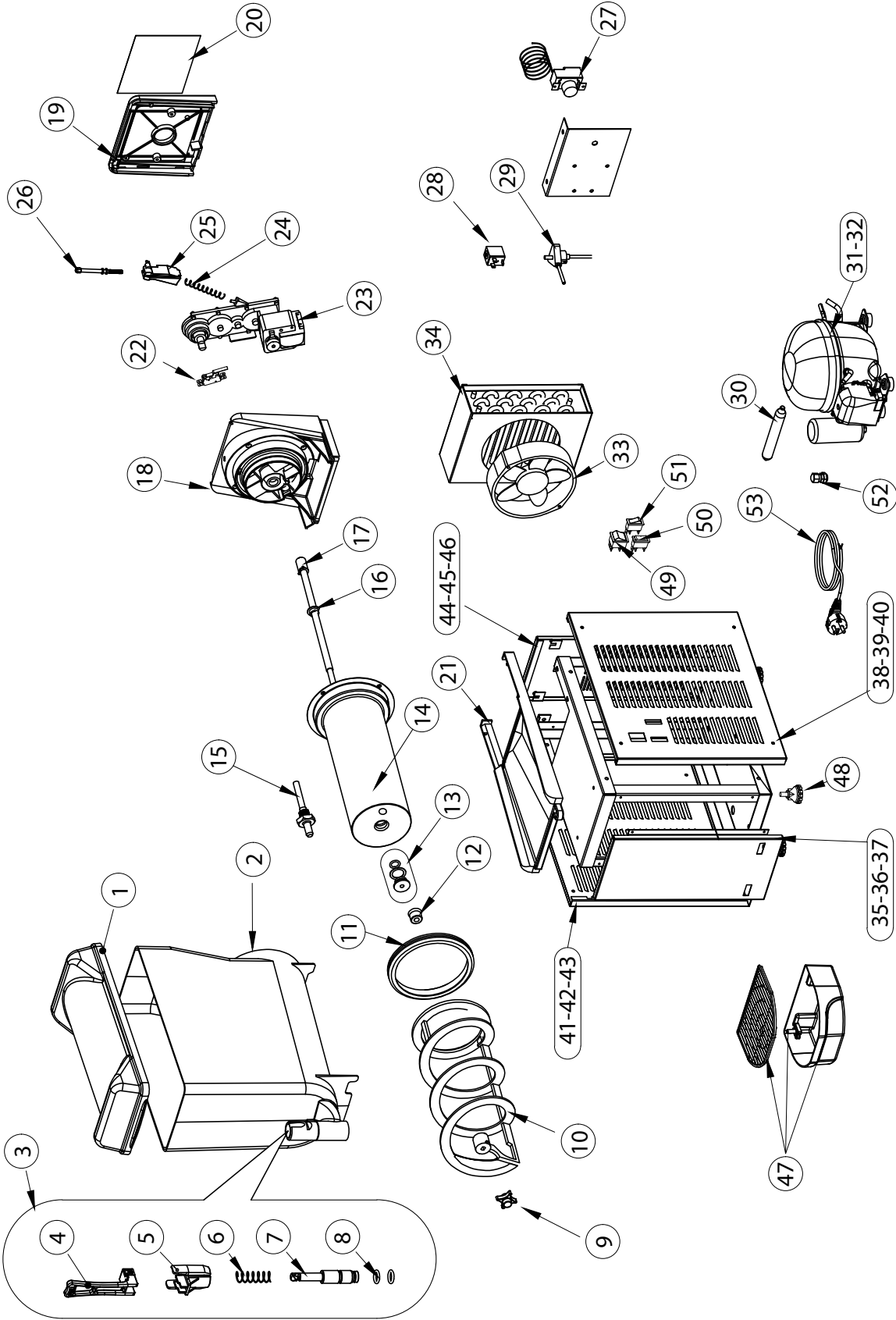
II. TECHNICAL SPECIFICATIONS

SLUSH SINGLE		
Bowl capacity	12L	
Weight & Dimensions	Machine	Package
Weight	24,7 kg	27,2 kg
Width	195 mm	225 mm
Depth	530 mm	510 mm
Height	770 mm	805 mm
Technical Specification		
Defrost Mode	Mechanik	
Cooling gas	R404A / R290	
Cooling power	490 W	
Power	340 W	
Current	1,54 A	
Supply voltage	220-240 V 50 Hz	
Optional voltage	208-220 V 60 Hz	
Optional voltage	115 V 60 Hz	

SLUSH TWIN		
Bowl capacity	12L + 12L	
Weight & Dimensions	Machine	Package
Weight	41,1 kg	44 kg
Width	390 mm	435 mm
Depth	530 mm	520 mm
Height	770 mm	805 mm
Technical Specification		
Defrost Mode	Mechanic	
Cooling gas	R404A / R290	
Cooling power	984 W	
Power	495 W	
Current	2,25 A	
Supply voltage	220-240 V 50 Hz	
Optional voltage	208-220 V 60 Hz	
Optional voltage	115 V 60 Hz	

SLUSH TRIPLE		
Bowl capacity	12L + 12L + 12L	
Weight & Dimensions	Machine	Package
Weight	58,5 kg	62 kg
Width	590 mm	630 mm
Depth	530 mm	530 mm
Height	770 mm	805 mm
Technical Specification		
Defrost Mode	Mechanic	
Cooling gas	R404A / R290	
Cooling power	1400 W	
Power	1050 W	
Current	3,72 A	
Supply voltage	220-240 V 50 Hz	
Optional voltage	208-220 V 60 Hz	
Optional voltage	115 V 60 Hz	

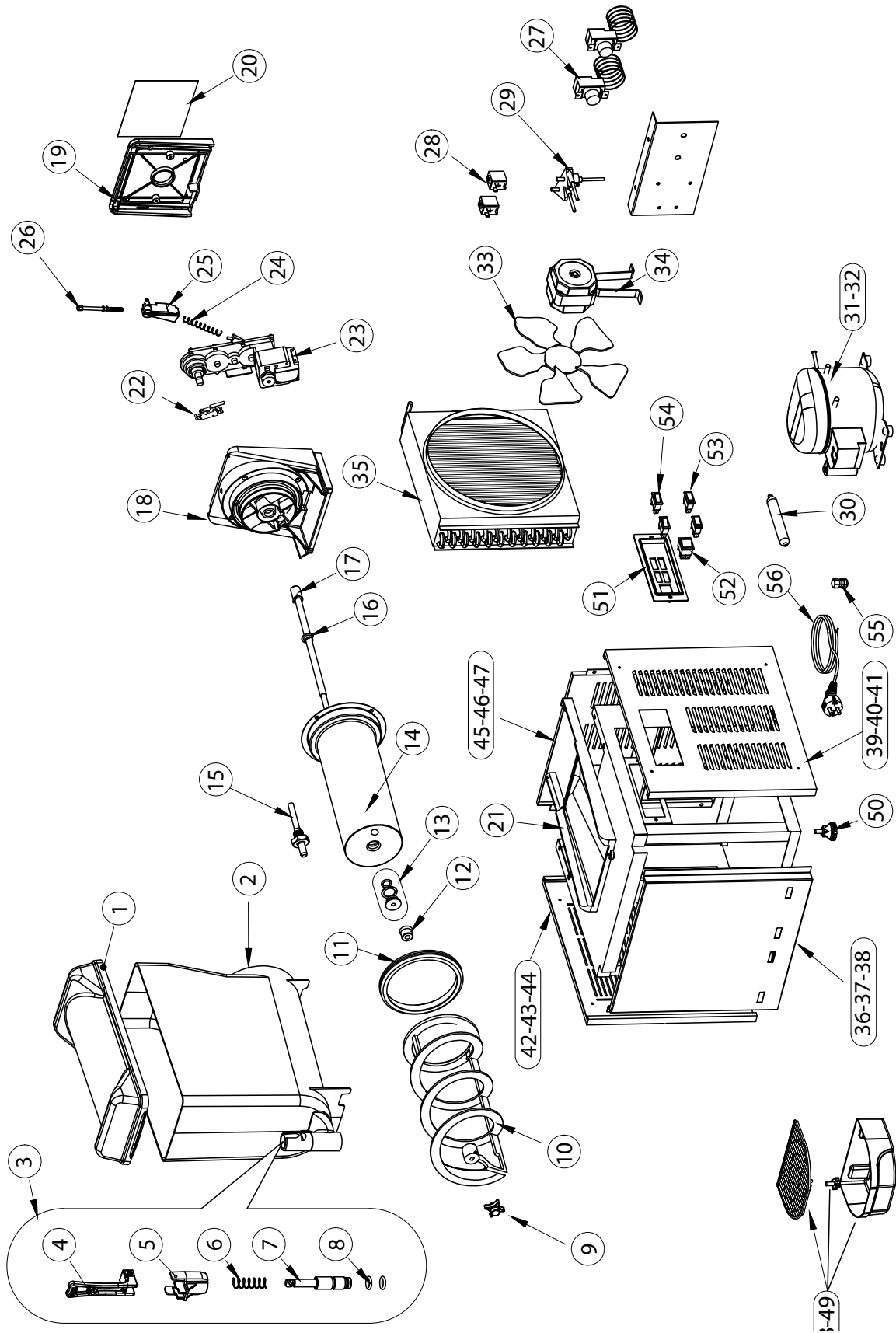
SLUSH SINGLE



SPARE PART LIST

NO	CODE	PARÇA ADI	PART NAME
1	YM-0011	SLUSH 12 L HAZNE KAPAĞI ŞEFFAF	SLUSH 12 L BOWL COVER TRANSPARENT
2	YM-0009	SLUSH 12 L HAZNE	SLUSH 12 L BOWL
3	YM-0389	SLUSH MUSLUK TAKIMI	SLUSH TAP SET
4	YM-0387	SLUSH MUSLUK KOLU	SLUSH TAP HANDLE
5	YM-0385	SLUSH MUSLUK GÖVDESİ	SLUSH TAP BODY
6	YM-0392	SLUSH MUSLUK YAYI	SLUSH TAP SPRING
7	YM-0390	SLUSH MUSLUK PİSTONU	SLUSH TAP PISTON
8	YM-0223	SLUSH MUSLUK PİSTON CONTASI O-RİNG	SLUSH TAP PISTON GASKET O-RING
9	YM-0373	SLUSH HELEZON SOMUNU	SLUSH AUGER NUT
10	YM-0367	SLUSH HELEZON	SLUSH AUGER
11	YM-0488	SLUSH HAZNE CONTASI	SLUSH BOWL GASKET
12	YM-0467	SLUSH HELEZON CONTASI	SLUSH AUGER GASKET
13	YM-0720	SLUSH TAS ÖN YATAK PLASTİĞİ TAKIM	SLUSH COOLING PLATE FRONT SLEEVE SET
14	YM-0492	SLUSH SOĞUTUCU TAS	SLUSH COOLING PLATE
15	YM-0441	SLUSH TERMOSTAT PROB YUVASI	SLUSH THERMOSTAT PROBE HOUSING
16	YM-0552	SLUSH SİNER BURÇ ŞAPKALI	SLUSH SINTER BUSHING
17	YM-0368	SLUSH HELEZON AKTARMA MİLİ TAKIM	SLUSH AUGER SHAFT SET
18	YM-0362	SLUSH ARKA TABLA	SLUSH REAR TABLE
19	YM-0364	SLUSH ARKA TABLA KAPAĞI	SLUSH REAR TABLE COVER
20	YM-0490	SLUSH GÖRSEL FİLM	SLUSH VISUAL CARD
21	YM-0358	SLUSH ALT TABLA	SLUSH BOTTOM TABLE
22	YM-0408	SLUSH SWITCH	SLUSH SWITCH
23	YM-0057	SLUSH KARIŞTIRICI MOTOR 33RPM	SLUSH MIXER MOTOR 33RPM
24	YM-0405	SLUSH YOĞUNLUK AYAR YAYI	SLUSH DENSITY ADJUSTMENT SPRING
25	YM-0402	SLUSH YOĞUNLUK AYAR GÖSTERGESİ	SLUSH DENSITY INDICATOR
26	YM-0124	SLUSH YOĞUNLUK AYAR PİMİ (SOMUNLA BİRLİKTE)	SLUSH DENSITY ADJUSTMENT PIN (WITH NUT)
27	YM-0202	ANALOG TERMOSTAT	ANALOG THERMOSTAT
28	YM-0611	SELENOİD BOBİNİ (1 ADET)	SOLENOID COIL (1 PCS)
29	YM-0909	SELENOİD GÖVDE 1 GİRİŞ 1 ÇIKIŞ	SOLENOID BODY 1 INPUT 1 OUTPUT
30	YM-0019	20 GR DRAYER	20 GR DRIER
31	YM-0903	1/4 HP KOMPRESÖR R290	1/4 HP COMPRESSOR R290
32	YM-0904	1/4 HP KOMPRESÖR R404	1/4 HP COMPRESSOR R404
33	YM-0825	SLUSH MONO 38W KARE FAN	SLUSH MONO 38W SQUARE FAN
34	YM-0635	SLUSH MONO KONDENSER	SLUSH MONO CONDENSER
35	YM-0794	SLUSH MONO ÖN KAPAK SARI	SLUSH MONO FRONT COVER YELLOW
36	YM-0798	SLUSH MONO ÖN KAPAK SİYAH	SLUSH MONO FRONT COVER BLACK
37	YM-0802	SLUSH MONO ÖN KAPAK INOX	SLUSH MONO FRONT COVER INOX
38	YM-0796	SLUSH MONO SOL KAPAK SARI	SLUSH MONO LEFT COVER YELLOW
39	YM-0800	SLUSH MONO SOL KAPAK SİYAH	SLUSH MONO LEFT COVER BLACK
40	YM-0804	SLUSH MONO SOL KAPAK INOX	SLUSH MONO LEFT COVER INOX
41	YM-0795	SLUSH MONO SAĞ KAPAK SARI	SLUSH MONO RIGHT COVER YELLOW
42	YM-0799	SLUSH MONO SAĞ KAPAK SİYAH	SLUSH MONO RIGHT COVER BLACK
43	YM-0803	SLUSH MONO SAĞ KAPAK INOX	SLUSH MONO RIGHT COVER INOX
44	YM-0797	SLUSH MONO ARKA KAPAK SARI	SLUSH MONO BACK COVER YELLOW
45	YM-0801	SLUSH MONO ARKA KAPAK SİYAH	SLUSH MONO BACK COVER BLACK
46	YM-0805	SLUSH MONO ARKA KAPAK INOX	SLUSH MONO BACK COVER INOX
47	YM-0702	DAMLALIK TAKIM YENİ MODEL	DRIP TRAY SET NEW MODEL
48	YM-0099	MAKİNE AYAĞI	MACHINE LEG
49	YM-0551	1-0 GENİŞ NOKTA IŞIKLI ANAHTAR (KILIFLI)	1-0 WIDE ILLUMINATED SWITCH (WITH COVER)
50	YM-0736	1-0-2 TEKLİ IŞIKSIZ ANAHTAR (KILIFLI)	1-0-2 SINGLE NON-ILLUMINATED SWITCH (WITH COVER)
51	YM-0624	1-0 TEKLİ IŞIKSIZ ANAHTAR (KILIFLI)	1-0 SINGLE NON-ILLUMINATED SWITCH (WITH COVER)
52	YM-0143	KABLO REKORU PG9	CABLE GLANDS PG9
53	YM-0523	FİŞLİ KABLO 3X1,5 MM 2 M	PLUG CABLE 3X1,5 MM 2 M

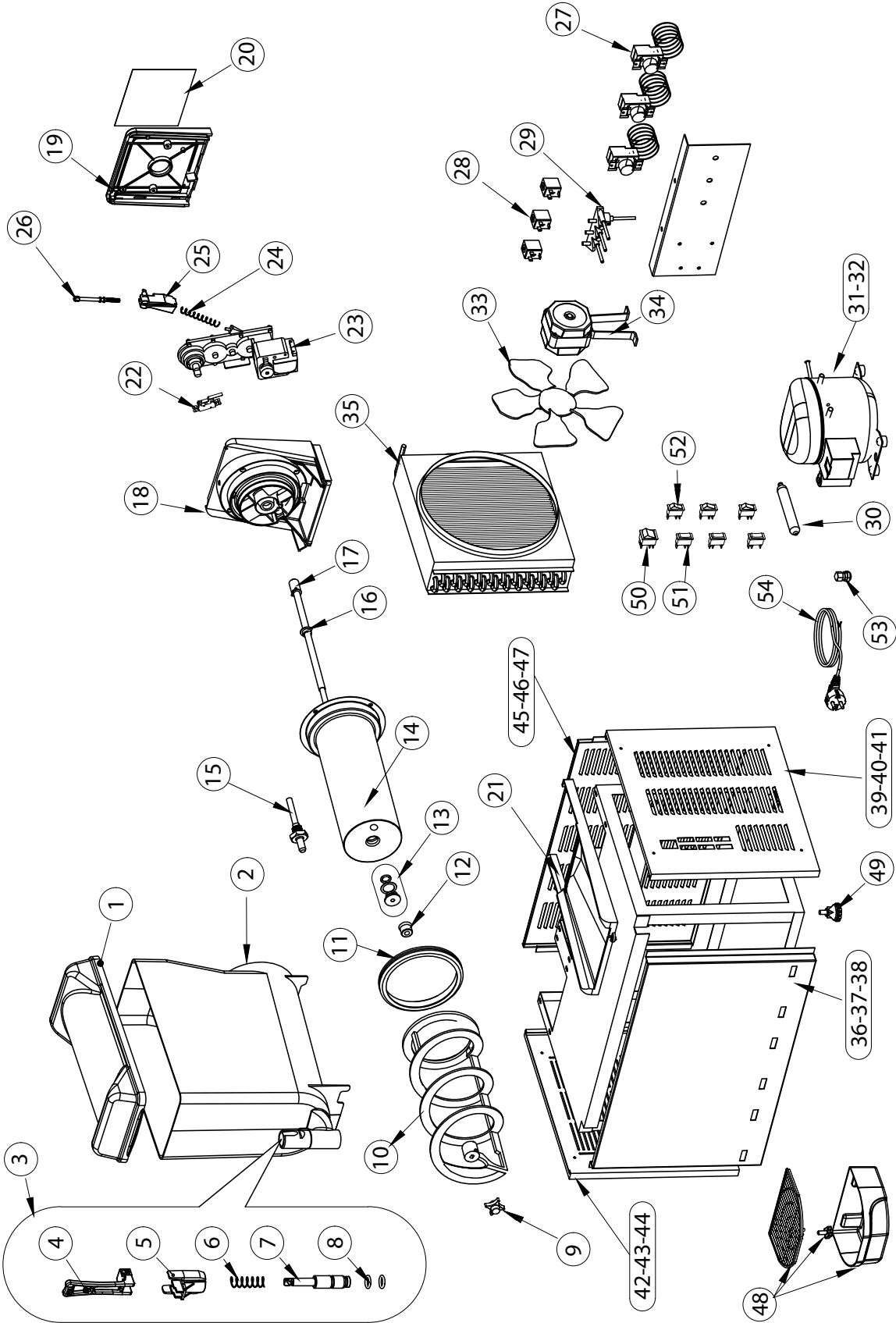
SLUSH TWIN



SPARE PART LIST

NO	CODE	PARÇA ADI	PART NAME
1	YM-0011	SLUSH 12 L HAZNE KAPAĞI ŞEFFAF	SLUSH 12 L BOWL COVER TRANSPARENT
2	YM-0009	SLUSH 12 L HAZNE	SLUSH 12 L BOWL
3	YM-0389	SLUSH MUSLUK TAKIMI	SLUSH TAP SET
4	YM-0387	SLUSH MUSLUK KOLU	SLUSH TAP HANDLE
5	YM-0385	SLUSH MUSLUK GÖVDESİ	SLUSH TAP BODY
6	YM-0392	SLUSH MUSLUK YAYI	SLUSH TAP SPRING
7	YM-0390	SLUSH MUSLUK PİSTONU	SLUSH TAP PISTON
8	YM-0223	SLUSH MUSLUK PİSTON CONTASI O-RİNG	SLUSH TAP PISTON GASKET O-RING
9	YM-0373	SLUSH HELEZON SOMUNU	SLUSH AUGER NUT
10	YM-0367	SLUSH HELEZON	SLUSH AUGER
11	YM-0488	SLUSH HAZNE CONTASI	SLUSH BOWL GASKET
12	YM-0467	SLUSH HELEZON CONTASI	SLUSH AUGER GASKET
13	YM-0720	SLUSH TAS ÖN YATAK PLASTİĞİ TAKIM	SLUSH COOLING PLATE FRONT SLEEVE SET
14	YM-0492	SLUSH SOĞUTUCU TAS	SLUSH COOLING PLATE
15	YM-0441	SLUSH TERMOSTAT PROB YUVASI	SLUSH THERMOSTAT PROBE HOUSING
16	YM-0552	SLUSH SİNER BURÇ ŞAPKALI	SLUSH SINTER BUSHING
17	YM-0368	SLUSH HELEZON AKTARMA MİLİ TAKIM	SLUSH AUGER SHAFT SET
18	YM-0362	SLUSH ARKA TABLA	SLUSH REAR TABLE
19	YM-0364	SLUSH ARKA TABLA KAPAĞI	SLUSH REAR TABLE COVER
20	YM-0490	SLUSH GÖRSEL FİLM	SLUSH VISUAL CARD
21	YM-0358	SLUSH ALT TABLA	SLUSH BOTTOM TABLE
22	YM-0408	SLUSH SWITCH	SLUSH SWITCH
23	YM-0057	SLUSH KARIŞTIRICI MOTOR 33RPM	SLUSH MIXER MOTOR 33RPM
24	YM-0405	SLUSH YOĞUNLUK AYAR YAYI	SLUSH DENSITY ADJUSTMENT SPRING
25	YM-0402	SLUSH YOĞUNLUK AYAR GÖSTERGESİ	SLUSH DENSITY INDICATOR
26	YM-0124	SLUSH YOĞUNLUK AYAR PİMİ (SOMUNLA BİRLİKTE)	SLUSH DENSITY ADJUSTMENT PIN (WITH NUT)
27	YM-0202	ANALOG TERMOSTAT	ANALOG THERMOSTAT
28	YM-0611	SELENOİD BOBİNİ (1 ADET)	SOLENOID COIL (1 PCS)
29	YM-0349	SELENOİD GÖVDE 1 GİRİŞ 2 ÇIKIŞ	SOLENOID BODY 1 INPUT 2 OUTPUT
30	YM-0056	30 GR DRAYER	30 GR DRIER
31	YM-0781	3/4 HP KOMPRESÖR R290	3/4 HP COMPRESSOR R290
32	YM-0226	3/4 HP KOMPRESÖR R404	3/4 HP COMPRESSOR R404
33	YM-0046	SLUSH 25 CM 34 DERECE KANAT	SLUSH 25 CM 34 DEGREE FAN BLADE
34	YM-0485	16W FAN MOTORU	16W FAN MOTOR
35	YM-0379	SLUSH TWIN/TRIPLE KONDENSER	SLUSH TWIN/TRIPLE CONDENSER
36	YM-0568	SLUSH TWIN ÖN KAPAK SARI	SLUSH TWIN FRONT COVER YELLOW
37	YM-0785	SLUSH TWIN ÖN KAPAK SİYAH	SLUSH TWIN FRONT COVER BLACK
38	YM-0749	SLUSH TWIN ÖN KAPAK INOX	SLUSH TWIN FRONT COVER INOX
39	YM-0569	SLUSH TWIN SOL KAPAK SARI	SLUSH TWIN LEFT COVER YELLOW
40	YM-0752	SLUSH TWIN SOL KAPAK SİYAH	SLUSH TWIN LEFT COVER BLACK
41	YM-0788	SLUSH TWIN SOL KAPAK INOX	SLUSH TWIN LEFT COVER INOX
42	YM-0570	SLUSH TWIN/TRIPLE SAĞ KAPAK SARI	SLUSH TWIN/TRIPLE RIGHT COVER YELLOW
43	YM-0755	SLUSH TWIN/TRIPLE SAĞ KAPAK SİYAH	SLUSH TWIN/TRIPLE RIGHT COVER BLACK
44	YM-0787	SLUSH TWIN/TRIPLE SAĞ KAPAK INOX	SLUSH TWIN/TRIPLE RIGHT COVER INOX
45	YM-0571	SLUSH TWIN ARKA KAPAK SARI	SLUSH TWIN BACK COVER YELLOW
46	YM-0786	SLUSH TWIN ARKA KAPAK SİYAH	SLUSH TWIN BACK COVER BLACK
47	YM-0756	SLUSH TWIN ARKA KAPAK INOX	SLUSH TWIN BACK COVER INOX
48	YM-0111	DAMLALIK TAKIM ESKİ MODEL	DRIP TRAY SET OLD MODEL
49	YM-0702	DAMLALIK TAKIM YENİ MODEL	DRIP TRAY SET NEW MODEL
50	YM-0099	MAKİNE AYAĞI	MACHINE LEG
51	YM-0360	SLUSH TWIN ANAHTAR PANOSU	SLUSH TWIN SWITCH PANEL
52	YM-0551	1-0 GENİŞ NOKTA IŞIKLI ANAHTAR (KILIFLI)	1-0 WIDE ILLUMINATED SWITCH (WITH COVER)
53	YM-0736	1-0-2 TEKLİ IŞIKSIZ ANAHTAR (KILIFLI)	1-0-2 SINGLE NON-ILLUMINATED SWITCH (WITH COVER)
54	YM-0624	1-0 TEKLİ IŞIKSIZ ANAHTAR (KILIFLI)	1-0 SINGLE NON-ILLUMINATED SWITCH (WITH COVER)
55	YM-0143	KABLO REKORU PG9	CABLE GLANDS PG9
56	YM-0523	FİŞLİ KABLO 3X1,5 MM 2 M	PLUG CABLE 3X1,5 MM 2 M

SLUSH TRIPLE



SPARE PART LIST

NO	CODE	PARÇA ADI	PART NAME
1	YM-0011	SLUSH 12 L HAZNE KAPAĞI ŞEFFAF	SLUSH 12 L BOWL COVER TRANSPARENT
2	YM-0009	SLUSH 12 L HAZNE	SLUSH 12 L BOWL
3	YM-0389	SLUSH MUSLUK TAKIMI	SLUSH TAP SET
4	YM-0387	SLUSH MUSLUK KOLU	SLUSH TAP HANDLE
5	YM-0385	SLUSH MUSLUK GÖVDESİ	SLUSH TAP BODY
6	YM-0392	SLUSH MUSLUK YAYI	SLUSH TAP SPRING
7	YM-0390		SLUSH TAP PISTON
8	YM-0223	SLUSH MUSLUK PİSTON CONTASI O-RİNG	SLUSH TAP PISTON GASKET O-RING
9	YM-0373	SLUSH HELEZON SOMUNU	SLUSH AUGER NUT
10	YM-0367	SLUSH HELEZON	SLUSH AUGER
11	YM-0488	SLUSH HAZNE CONTASI	SLUSH BOWL GASKET
12	YM-0467	SLUSH HELEZON CONTASI	SLUSH AUGER GASKET
13	YM-0720	SLUSH TAS ÖN YATAK PLASTİĞİ TAKIM	SLUSH COOLING PLATE FRONT SLEEVE SET
14	YM-0492	SLUSH SOĞUTUCU TAS	SLUSH COOLING PLATE
15	YM-0441	SLUSH TERMOSTAT PROB YUVASI	SLUSH THERMOSTAT PROBE HOUSING
16	YM-0552	SLUSH SİNTER BURÇ ŞAPKALI	SLUSH SINTER BUSHING
17	YM-0368	SLUSH HELEZON AKTARMA MİLİ TAKIM	SLUSH AUGER SHAFT SET
18	YM-0362	SLUSH ARKA TABLA	SLUSH REAR TABLE
19	YM-0364	SLUSH ARKA TABLA KAPAĞI	SLUSH REAR TABLE COVER
20	YM-0490	SLUSH GÖRSEL FİLM	SLUSH VISUAL CARD
21	YM-0358	SLUSH ALT TABLA	SLUSH BOTTOM TABLE
22	YM-0408	SLUSH SWITCH	SLUSH SWITCH
23	YM-0057	SLUSH KARIŞTIRICI MOTOR 33RPM	SLUSH MIXER MOTOR 33RPM
24	YM-0405	SLUSH YOĞUNLUK AYAR YAYI	SLUSH DENSITY ADJUSTMENT SPRING
25	YM-0402	SLUSH YOĞUNLUK AYAR GÖSTERGESİ	SLUSH DENSITY INDICATOR
26	YM-0124	SLUSH YOĞUNLUK AYAR PİMİ (SOMUNLA BİRLİKTE)	SLUSH DENSITY ADJUSTMENT PIN (WITH NUT)
27	YM-0202	ANALOG TERMOSTAT	ANALOG THERMOSTAT
28	YM-0611	SELENOİD BOBİNİ (1 ADET)	SOLENOID COIL (1 PCS)
29	YM-0544	SELENOİD GÖVDE 1 GİRİŞ 3 ÇIKIŞ	SOLENOID BODY 1 INPUT 3 OUTPUT
30	YM-0056	30 GR DRYER	30 GR DRIER
31	YM-0905	1 HP KOMPRESÖR R290	1 HP COMPRESSOR R290
32	YM-0612	1 HP KOMPRESÖR R404	1 HP COMPRESSOR R404
33	YM-0046	SLUSH 25 CM 34 DERECE KANAT	SLUH 25 CM 34 DEGREE FAN BLADE
34	YM-0485	16W FAN MOTORU	16W FAN MOTOR
35	YM-0379	SLUSH TWIN/TRIPLE KONDENSER	SLUSH TWIN/TRIPLE CONDENSER
36	YM-0750	SLUSH TRIPLE ÖN KAPAK SARI	SLUSH TRIPLE FRONT COVER YELLOW
37	YM-0789	SLUSH TRIPLE ÖN KAPAK SİYAH	SLUSH TRIPLE FRONT COVER BLACK
38	YM-0751	SLUSH TRIPLE ÖN KAPAK INOX	SLUSH TRIPLE FRONT COVER INOX
39	YM-0753	SLUSH TRIPLE SOL KAPAK SARI	SLUSH TRIPLE LEFT COVER YELLOW
40	YM-0754	SLUSH TRIPLE SOL KAPAK SİYAH	SLUSH TRIPLE LEFT COVER BLACK
41	YM-0792	SLUSH TRIPLE SOL KAPAK INOX	SLUSH TRIPLE LEFT COVER INOX
42	YM-0570	SLUSH TWIN/TRIPLE SAĞ KAPAK SARI	SLUSH TWIN/TRIPLE RIGHT COVER YELLOW
43	YM-0755	SLUSH TWIN/TRIPLE SAĞ KAPAK SİYAH	SLUSH TWIN/TRIPLE RIGHT COVER BLACK
44	YM-0787	SLUSH TWIN/TRIPLE SAĞ KAPAK INOX	SLUSH TWIN/TRIPLE RIGHT COVER INOX
45	YM-0757	SLUSH TRIPLE ARKA KAPAK SARI	SLUSH TRIPLE BACK COVER YELLOW
46	YM-0790	SLUSH TRIPLE ARKA KAPAK SİYAH	SLUSH TRIPLE BACK COVER BLACK
47	YM-0758	SLUSH TRIPLE ARKA KAPAK INOX	SLUSH TRIPLE BACK COVER INOX
48	YM-0702	DAMLALIK TAKIM YENİ MODEL	DRIP TRAY SET NEW MODEL
49	YM-0099	MAKİNE AYAĞI	MACHINE LEG
50	YM-0551	1-0 GENİŞ NOKTA IŞIKLI ANAHTAR (KILIFLI)	1-0 WIDE ILLUMINATED SWITCH (WITH COVER)
51	YM-0736	1-0-2 TEKLİ IŞIKSIZ ANAHTAR (KILIFLI)	1-0-2 SINGLE NON-ILLUMINATED SWITCH (WITH COVER)
52	YM-0624	1-0 TEKLİ IŞIKSIZ ANAHTAR (KILIFLI)	1-0 SINGLE NON-ILLUMINATED SWITCH (WITH COVER)
53	YM-0143	KABLO REKORU PG9	CABLE GLANDS PG9
54	YM-0523	FİŞLİ KABLO 3X1,5 MM 2 M	PLUG CABLE 3X1,5 MM 2 M

TROUBLESHOOTING

PROBLEM	CAUSE	SOLUTION
<i>The dispenser is not working</i>	<ol style="list-style-type: none"> 1. The dispenser may not be connected to the electricity. 2. The thermal protector may be off. 3. The fuse may be disconnected. 4. Thermostats may be closed. 5. The switches may be on the off (0) position 6. There may be a power shortage. 	<ol style="list-style-type: none"> 1. Connect the dispenser to the electricity. 2. Wait for some a while,thermal will be activated. 3. Check the main fuse. 4. Open the thermostats. 5. Turn the switches to the on (I) position. 6. Contact your electricity provider.
<i>The tap constantly drips</i>	<ol style="list-style-type: none"> 1. The tap gasket might not be in place. 2. The tap hose may be torn. 3. The tap piston might not be lubricated. 4. The body of the faucet may not fit properly. 5. The tap spring may have lost its hardness. 	<ol style="list-style-type: none"> 1. Check the gaskets it must be two pieces. 2. Replace the tap hose with a new one. 3. Lubricate the tap piston. 4. Fit the tab of the faucet body in to the bowl. 5. Replace the tap spring with a new one.
<i>The beverage is flowing from different points of the machine.</i>	<ol style="list-style-type: none"> 1. The bowl is may not be installed properly 2. The bowl and the gasket are may not lubricated with Vaseline. 3. May the gasket is damaged 	<ol style="list-style-type: none"> 1. Make sure the hopper front tab goes in to the groove in the sub-plate 2. Lubricate the bowl and the gasket. 3. Replace the gasket with a new one.
<i>White helix mixer does not turn</i>	<ol style="list-style-type: none"> 1. Set the mixer switch to the "0" position 2. The cooling plate is may covered with ice preventing the helix to turn. 3. Bowl cover might be open. (in Allure models) 	<ol style="list-style-type: none"> 1. Set the mixer switch to the "I" position. 2. Turn off the cooling and wait for the ice to melt. Add some sugar. Do not use hot water. 3. Place the bowl cover properly.
<i>The dispenser does not produce granita</i>	<ol style="list-style-type: none"> 1. C key is may in (I) position 2. The dispenser may be too close to another device that generates heat. 3. Air circulation around the dispenser may not be sufficient. 4. May condenser is dirty. 5. The density may not be adjusted 6. Bowl cover might not fit properly (for allure models). 7. Although C switch is in "II" position, if B switch is in "0" position, it does not cool and slush. 8. The auger gasket may be too tight 	<ol style="list-style-type: none"> 1. Change the C keys to the (II) position 2. Change the dispenser place to the where there is no heat. 3. Make sure there is enough airflow by securing 15 cm on each side of the dispenser 4. Clean the condenser with a vacuum cleaner and brush. 5. Adjust the density setting towards the plus direction. 6. Make sure the bowl cover engages. 7. Change B to (I) 8. Loosen the auger gasket
<i>White helix mixer is making excessive noise when turning.</i>	<ol style="list-style-type: none"> 1. The cooling plate is covered with ice preventing the helix to turn. 2. Screw mixer might be broken 3. Screw mixer nut might not be lubricated. 	<ol style="list-style-type: none"> 1. Turn off the cooling and wait for the ice to melt. Add some sugar. Do not use hot water. 2. Replace screw mixer with new one 3. Lubricate the screw mixer nut

2 X 12L TWIN SLUSH MACHINE · SKU: SLU001 | 3 X 12L TRIPLE SLUSH MACHINE · SKU: SLU002



STEP UP TO THE PLATE

DISTRIBUTED BY RG DISTRIBUTORS LTD. TEL: 0333 358 3678