

CONTENDER

STEP UP TO THE PLATE



CONTENDER PROFESSIONAL HAND BLENDERS

MXH028 | MXH029 | MXH030

CONTENTS

I. GENERAL INFORMATION

· PURPOSE OF THE MANUAL.....	4
· MANUFACTURER AND MACHINE IDENTIFICATION.....	4
· MACHINE DESCRIPTIONS.....	5
· TECHNICAL SPECIFICATIONS.....	6
· OVERALL DIMENSIONS.....	7
· SAFETY DEVICES.....	8
· SAFETY INFORMATION.....	8
· RESIDUAL RISKS.....	9

2 INSTALLATION INFORMATION

· PACKAGING AND UNPACKING.....	10
· INSTALLATION AREA.....	10
· ELECTRICAL CONNECTIONS.....	10

3 USE AND CLEANING INFORMATION

· CONTROL DESCRIPTION.....	11
· MIXER USE.....	11
· WHIP USE.....	12
· RECOMMENDATIONS FOR USE.....	12
· END OF THE DAY CLEANING.....	13
· EXTENDED PERIODS OF DISUSE.....	13
· TROUBLESHOOTING.....	13

4 ATTACHMENTS

· SPARE PARTS CATALOGUE.....	26
------------------------------	----



PURPOSE OF THE MANUAL

THIS MANUAL WAS WRITTEN BY THE MANUFACTURER AND IS AN INTEGRAL PART OF MACHINE EQUIPMENT. DURING DESIGN AND CONSTRUCTION THE MANUFACTURER HAS CAREFULLY CONSIDERED POSSIBLE HAZARDS AND PERSONAL RISKS THAT MAY RESULT FROM INTERACTION WITH THE MACHINE. IN ADDITION TO OBSERVING THE SPECIFIC LAWS IN FORCE, THE MANUFACTURER HAS ADOPTED ALL “EXEMPLARY CONSTRUCTION TECHNIQUE PRINCIPLES”. THE PURPOSE OF THIS INFORMATION IS TO ADVISE THE USERS TO ADOPT EXTREME CAUTION TO AVOID RISKS. HOWEVER, DISCRETION IS INVALUABLE. SAFETY IS ALSO IN THE HANDS OF ALL THE OPERATORS WHO INTERACT WITH THE MACHINE. KEEP THIS MANUAL IN A SUITABLE PLACE, ALWAYS WITHIN REACH FOR CONSULTATION. THE FOLLOWING SYMBOLS ARE INCLUDED TO BETTER STRESS SOME PASSAGES:



INFORMATION: INDICATES PARTICULARLY IMPORTANT TECHNICAL INFORMATION.



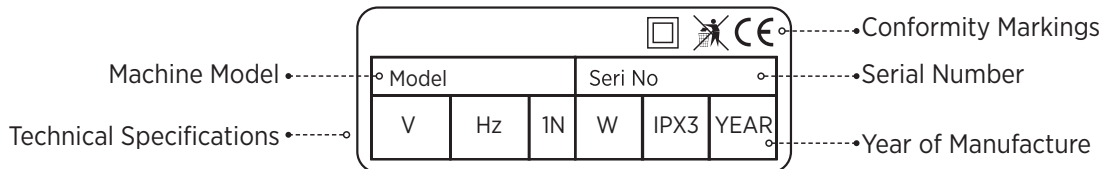
DANGER - WARNING: INDICATES HAZARDS THAT MAY CAUSE SERIOUS DAMAGES; ATTENTION IS REQUIRED

THE FOLLOWING IS ENCLOSED WITH THIS MANUAL:

- WARRANTY CERTIFICATE DESCRIBING THE MANUFACTURER’S WARRANTY CONDITIONS.
- DOCUMENTS THAT PROVE CONFORMITY WITH EFFECTIVE HEALTH AND SAFETY LAWS.

CONTACT THE AUTHORISED DEALER FOR ANY SERVICE REQUEST, INFORMATION OR SPARE PARTS ORDER.

MACHINE AND MANUFACTURER IDENTIFICATION



MACHINE DESCRIPTIONS

THE MIXER RANGE IS MADE UP OF THE FOLLOWING MODELS:

MODEL MXH028 WAS DESIGNED FOR SMALL PROCESSING NEEDS. THE UTENSIL HAS A CLASSIC VERTICAL HOLD SHAPE. THE MOTOR UNIT IS CONSTRUCTED WITH A PLASTIC STRUCTURE WHILE THE MIXING UTENSIL IS MADE UP OF STAINLESS STEEL, ALUMINIUM ALLOY AND PLASTIC ELEMENTS. THE MACHINE HAS ONLY ONE SPEED.

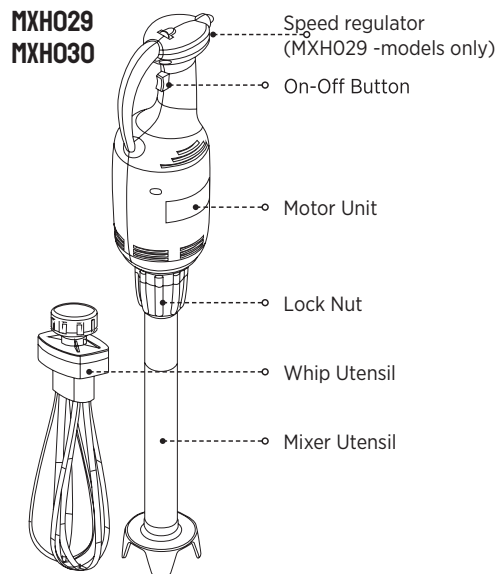
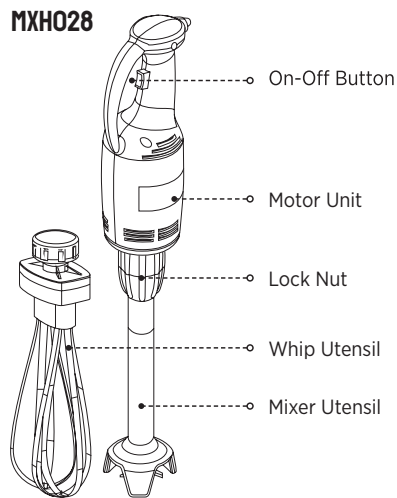


MODEL MXH029 WAS DESIGNED FOR SMALL-MEDIUM WORK NEEDS. THE UTENSIL HAS A CLASSIC VERTICAL HOLD SHAPE. THE MOTOR UNIT IS CONSTRUCTED WITH A PLASTIC STRUCTURE WHILE THE MIXING AND WHIP UTENSILS ARE MADE UP OF STAINLESS STEEL, ALUMINIUM ALLOY AND PLASTIC ELEMENTS. THE MACHINE HAS ONE MIXER SPEED AND ADJUSTABLE WHIP SPEED.



GENERAL INFORMATION	
NOISE LEVEL	LESS THAN 70 DB(A)
INSTALLATION	HAND-HELD UTENSIL
PROTECTION LEVEL	IPX3
ELECTRICAL SHOCK PROTECTION	CLASS II
DIRECTIVE COMPLIANCE	93/68/EC - 98/37/EC - 2003/108/EC - 2002/72/EC - REGULATION (EC) NO 1935/2004 - 2004/108/EC - 2006/95/EC

TECHNICAL SPECIFICATIONS

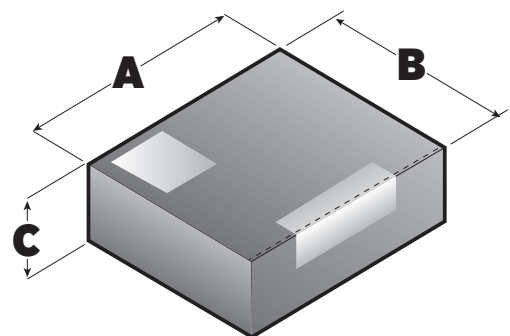


SKU/MODEL	POWER SUPPLY	POWER	REVOLUTION	NET WEIGHT	PACKAGED WEIGHT
MXH028	230V 50/60HZ IPH	0,25 KW	13000 RPM	2,25 KG.	3,85 KG. +/- 10
MXH029	230V 50/60HZ IPH	0,4 KW	2500-11000 RPM	3,90 KG.	5,50 KG. +/- 10
MXH030	230V 50/60HZ IPH	0,4 KW	2500-11000 RPM	4,10 KG.	4,85 KG. +/- 10

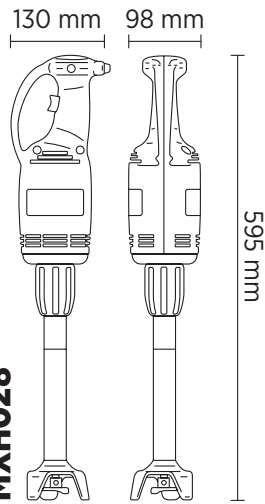
OVERALL DIMENSIONS

PACKAGED DIMENSIONS

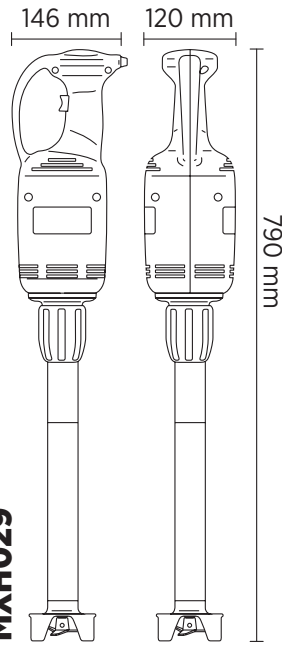
SKU/MODEL	A	B	C
MXH028	530 MM +/- 3	320 MM +/- 3	185 MM +/- 3
MXH029	530 MM +/- 3	320 MM +/- 3	185 MM +/- 3
MXH030	675 MM +/- 3	235 MM +/- 3	155 MM +/- 3



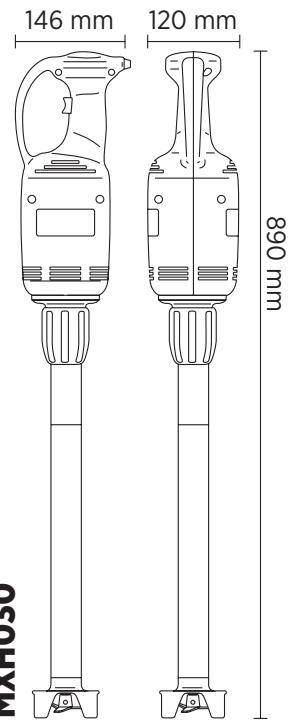
MXH028



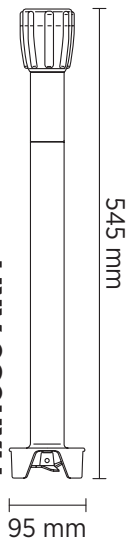
MXH029



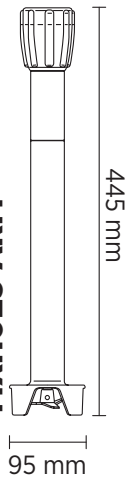
MXH030



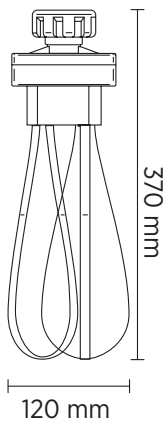
MXH030 ARM



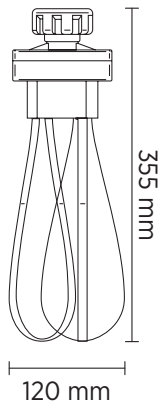
MXH029 ARM



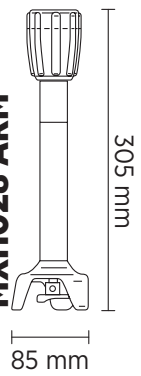
MXH029 WHIP



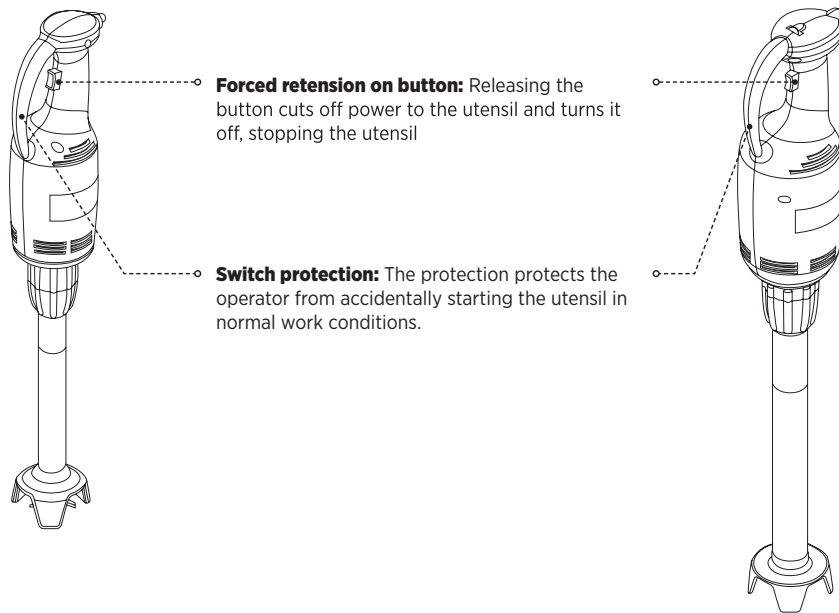
MXH028 WHIP



MXH028 ARM



SAFETY DEVICES



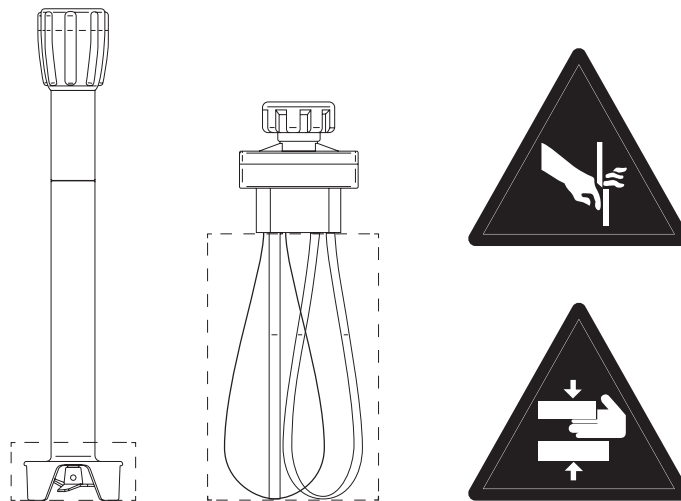
SAFETY INFORMATION

- i** CAREFUL CONSULTATION OF THIS MANUAL BEFORE INSTALLATION AND USE IS ESSENTIAL. CONTINUAL OBSERVANCE OF THE INDICATIONS FOUND IN THE MANUAL GUARANTEE PERSONAL AND MACHINE SAFETY.
- i** NEVER TAMPER WITH SAFETY DEVICES FOR ANY REASON.
- i** STRICT OBSERVANCE OF THE WORK SAFETY REGULATIONS ISSUED BY THE RESPONSIBLE ORGANISATIONS IN EACH COUNTRY IS STRONGLY RECOMMENDED.
- i** THE MANUFACTURER/SUPPLIER IS NOT LIABLE FOR DAMAGES TO PERSONS OR THINGS DUE TO THE NEGLECT OF SAFETY REGULATIONS.
- i** CORRECT MACHINE PLACEMENT, ILLUMINATION AND CLEANLINESS ARE IMPORTANT CONDITIONS FOR PERSONAL SAFETY.
- i** DO NOT EXPOSE THE MACHINE TO THE ELEMENTS.
- i** MACHINE CONNECTIONS AND START-UP MUST ONLY BE PERFORMED BY SPECIALISED TECHNICIANS.
- i** MAKE SURE THAT THE SYSTEM SPECIFICATIONS OF THE ROOM WHERE THE MACHINE IS INSTALLED CORRESPOND TO THE INFORMATION PRINTED ON THE PLATE.
- i** MAKE SURE THE MACHINE IS CONNECTED TO A GROUNDING SYSTEM.
- i** THE WORK AREA AROUND THE MACHINE MUST ALWAYS BE KEPT CLEAN AND DRY.
- i** USE THE GARMENTS FORESEEN BY WORK SAFETY REGULATIONS.

- i** THIS UTENSIL MUST ONLY BE USED FOR ITS SPECIFIC PURPOSE; ANY OTHER USE IS CONSIDERED IMPROPER AND THEREFORE HAZARDOUS.
- i** CHECK THE SUITABILITY AND WEIGHT OF PRODUCTS TO BE PROCESSED; DO NOT OVERLOAD THE MACHINE.
- i** INTRODUCING OBJECTS, TOOLS, HANDS OR OTHER THINGS WITHIN HAZARDOUS PARTS IS FORBIDDEN.
- i** KEEP THE MACHINE AWAY FROM CHILDREN.
- i** DISCONNECT THE POWER CORD FROM THE ELECTRICAL SOCKET WHEN THE MACHINE IS NOT IN USE.
- i** IN THE EVENT OF MALFUNCTIONS AND/OR PROBLEMS, DO NOT ATTEMPT TO REPAIR THE MACHINE. CONTACT THE AUTHORISED DEALER.
- i** USE ORIGINAL SPARE PARTS.
- i** BEFORE CLEANING THE MACHINE, DISCONNECT THE POWER SUPPLY BY UNPLUGGING THE MACHINE.
- i** DO NOT CLEAN WITH HIGH-PRESSURE JETS OF WATER.

RESIDUAL RISKS

IN ACCORDANCE WITH POINT 1.7.2 “RESIDUAL RISK WARNINGS” IN MACHINE DIRECTIVE 98/37/EC AND FURTHER AMENDMENTS, PLEASE NOTE THAT THE SAFETY GUARDS, CONSTRUCTED IN ACCORDANCE WITH SAID DIRECTIVE, DO NOT COMPLETELY ELIMINATE CUTTING AND TRAPPING RISK TO UPPER LIMBS.



DANGER-WARNINGS: NEVER NEAR UPPER LIMBS OR OTHER BODY PARTS TO THE INDICATED UTENSIL AREA WHEN INSERTED IN THE MOTOR UNIT. ONLY CLEAN UTENSILS REMOVED FROM THE MOTOR UNIT.

INSTALLATION INFORMATION

PACKING AND UNPACKING

THE MACHINE IS PACKAGED IN CARDBOARD WITH POLYESTER FOAM INSERTS TO GUARANTEE FULL INTEGRITY DURING TRANSPORT.

- * HANDLE THE PACKAGING ACCORDING TO THE INSTRUCTIONS.
- * OPEN THE PACKAGING AND CHECK THE INTEGRITY OF ALL COMPONENTS. KEEP PACKAGING FOR FUTURE MOVES.
- * LIFT THE MACHINE AS INDICATED AND PLACE IT IN THE INSTALLATION AREA.

INSTALLATION AREA

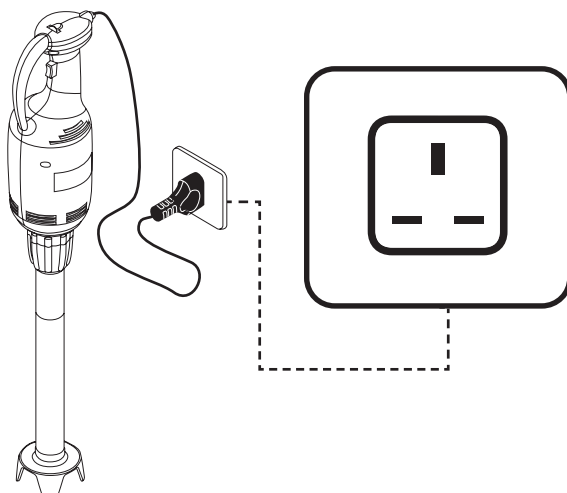
THE ARRANGED AREA MUST BE SUITABLY ILLUMINATED AND AN ELECTRICAL SOCKET MUST BE AVAILABLE. THE RESTING SURFACE MUST BE SUFFICIENTLY AMPLE, EVEN AND DRY. THE FRY TOP MUST BE INSTALLED IN ROOMS WITH NON-EXPLOSIVE ENVIRONMENTS. IN ANY CASE, INSTALLATION MUST ALSO BE PERFORMED IN CONSIDERATION OF THE WORK SAFETY LAWS IN FORCE.

ROOM CONDITIONS TABLE

DESCRIPTIONS	VALUES
WORKING TEMPERATURE	0-35 °C (32-95 °F)
STORAGE TEMPERATURE	530 MM +/- 3
RELATIVE HUMIDITY	MAXIMUM 80% WITH 20 °C ROOM TEMPERATURE MAXIMUM 50% WITH ROOM TEMPERATURE BETWEEN 20-60 °C
DUSTINESS	LESS THAN 0.03 G/M ³

ELECTRICAL CONNECTIONS

VERIFY THE EFFICIENCY OF THE GROUNDING SYSTEM IN THE BUILDING. MAKE SURE THAT LINE VOLTAGE (V) AND FREQUENCY (HZ) CORRESPOND TO THOSE OF THE MACHINE (SEE THE IDENTIFICATION PLATE AND WIRING DIAGRAM). THE MACHINE IS EQUIPPED WITH AN ELECTRICAL CORD THAT CONNECTS TO A MULTIPOLAR PLUG. THE PLUG IS TO BE CONNECTED TO A WALL SWITCH EQUIPPED WITH A CIRCUIT BREAKER.



**DANGER-WARNINGS:
ELECTRICAL CONNECTIONS TO
THE SUPPLY MAINS MUST BE
PERFORMED BY SPECIALISED
PERSONNEL.**

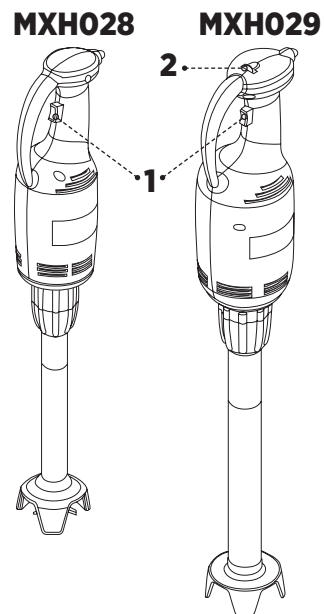
USE AND CLEANING INFORMATION

CONTROL DESCRIPTIONS

- 1) **ON-OFF BUTTON:** PRESS THE BUTTON TO START THE MACHINE. RELEASE TO STOP THE MACHINE.
- 2) **SPEED ADJUSTMENT KNOB (MXHO29 MODEL ONLY):** THE SPEED ADJUSTMENT KNOB BOTH ADJUSTS UTENSIL SPEED AND DIRECTLY BY-PASSES TO MAXIMUM MACHINE SPEED. TO SWITCH FROM ONE CONDITION TO ANOTHER, ROTATE THE KNOB ONE NOTCH.
- A) **ADJUSTABLE SPEED (ONLY USE WITH THE WHIP UTENSIL):**
ON MXHO29 AND MXHO30 MODELS, IT IS MARKED:

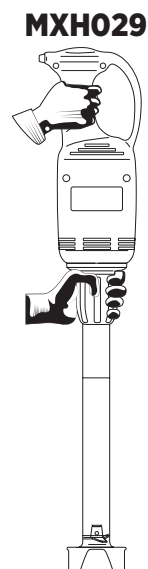


- B) **MAXIMUM SPEED (ONLY USE WITH THE MIXER UTENSIL):**
ON MXHO29, AND MXHO30 MODELS, IT IS MARKED:



MIXER USE

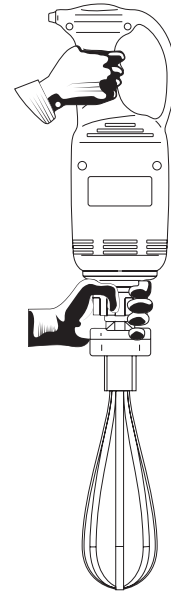
- INSERT THE MIXER UTENSIL IN THE MOTOR UNIT AND TIGHTEN THE UTENSIL LOCK NUT.
- CONNECT THE MOTOR UNIT TO THE POWER PLUG.
- FOR MXHO28 & MXHO29 MODELS, TURN THE SPEED ADJUSTMENT KNOB.
- FIRMLY HOLD THE MIXER LOCK NUT WITH ONE HAND AND THE MOTOR UNIT HANDLE WITH THE OTHER.
- INSERT THE MIXER IN THE CONTAINER WITH THE PRODUCT TO BE PROCESSED.
- PRESS THE ON BUTTON BEING CAREFUL NOT TO NEAR HANDS OR ANY OTHER PART OF THE BODY TO THE AREA WHERE THE MIXER BLADES ARE LOCATED.
- WHEN FINISHED, RELEASE THE ON BUTTON TO STOP THE UTENSIL AND REMOVE THE UTENSIL FROM THE CONTAINER.



DANGER-WARNINGS: NEVER NEAR UPPER LIMBS OR OTHER PARTS OF THE BODY TO THE AREA WHERE THE MIXER UTENSIL BLADE IS LOCATED WHEN INSERTED IN THE MOTOR UNIT. ONLY CLEAN UTENSILS REMOVED FROM THE MOTOR UNIT..

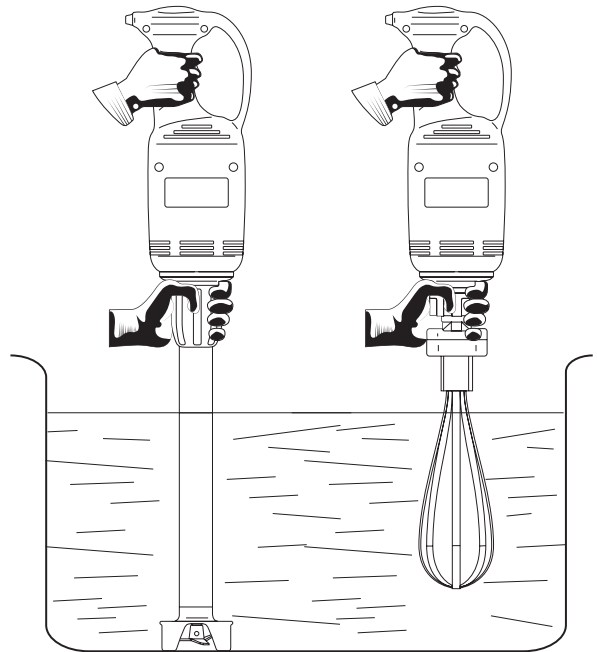
WHIP USE

- INSERT THE WHIP UTENSIL IN THE MOTOR UNIT AND TIGHTEN THE UTENSIL LOCK NUT.
- CONNECT THE MOTOR UNIT TO THE POWER PLUG.
- FOR MODEL MXHO29, TURN THE SPEED ADJUSTMENT KNOB TO A NUMBER BETWEEN I AND IO.
- FOR MODEL MXHO29, TURN THE SPEED ADJUSTMENT KNOB.
- FIRMLY HOLD THE MIXER LOCK NUT WITH ONE HAND AND THE MOTOR UNIT HANDLE WITH THE OTHER.
- INSERT THE WHIP IN THE CONTAINER WITH THE PRODUCT TO BE PROCESSED.
- PRESS THE ON BUTTON BEING CAREFUL NOT TO NEAR HANDS OR ANY OTHER PART OF THE BODY TO THE AREA WHERE THE WHIPS ARE LOCATED.
- ROTATE THE SPEED ADJUSTMENT KNOB TO SELECT THE BEST ROTATION SPEED FOR THE PROCESS.
- WHEN FINISHED, RELEASE THE ON BUTTON TO STOP THE UTENSIL AND REMOVE THE WHIP UTENSIL FROM THE CONTAINER.



RECOMMENDATIONS FOR USE

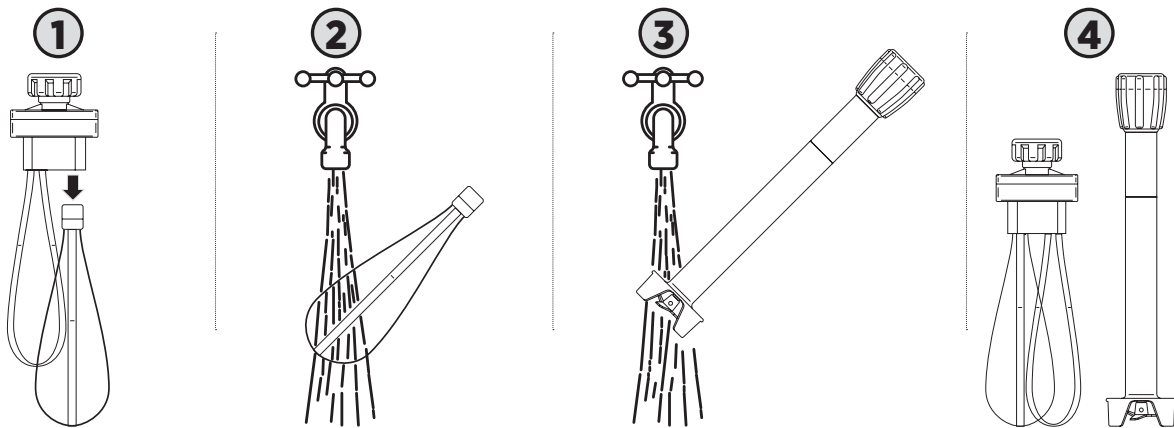
- USE THE MIXER UTENSIL IN CONTAINERS, MAKING SURE TO REST THE PROTECTIVE BLADE HOOD ON THE BOTTOM SO THAT PROCESSING PRODUCT NEVER EXCEEDS THE MAXIMUM LEVEL NOTCH ON THE UTENSIL (2/3 OF THE ACCESSORY).
- USE THE WHIP TOOL IN CONTAINERS, MAKING SURE NEVER TO REST THE TWO WHIPS ON THE BOTTOM AND SO THAT THE GEAR BOX IS ALWAYS OUT OF THE PROCESSING PRODUCT.



INFORMATION: BE VERY CAREFUL NEVER TO SUBMERGE THE WHIP UTENSIL GEAR BOX IN PROCESSING PRODUCT TO AVOID DAMAGING THE GEAR UNIT INSIDE.

END OF THE DAY CLEANING

- UNPLUG THE MOTOR UNIT FROM THE POWER SOCKET.
- REMOVE UTENSILS FROM THE MOTOR UNIT. ¹
- REMOVE THE WHIPS FROM THE WHIP UTENSIL AND WASH THEM UNDER RUNNING WATER (ONLY WHEN THE UTENSIL IS REMOVED FROM THE MOTOR UNIT). ²
- WASH THE MIXER UTENSIL UNDER RUNNING WATER (ONLY WHEN THE UTENSIL IS REMOVED FROM THE MOTOR UNIT).
- HANG THE UTENSILS WITH THE MIXER ENDS (MIXER BLADE OR WHIPS) FACING DOWN. ⁴
- CLEAN EXTERNAL MOTOR UNIT PARTS WITH A DAMP SPONGE AND DRY (ONLY PERFORM THIS OPERATION WHEN UNPLUGGED FROM THE POWER SOCKET).
- DO NOT USE METALLIC PADS AND ABRASIVE DETERGENTS.
- ACCURATELY CLEAN USING NEUTRAL



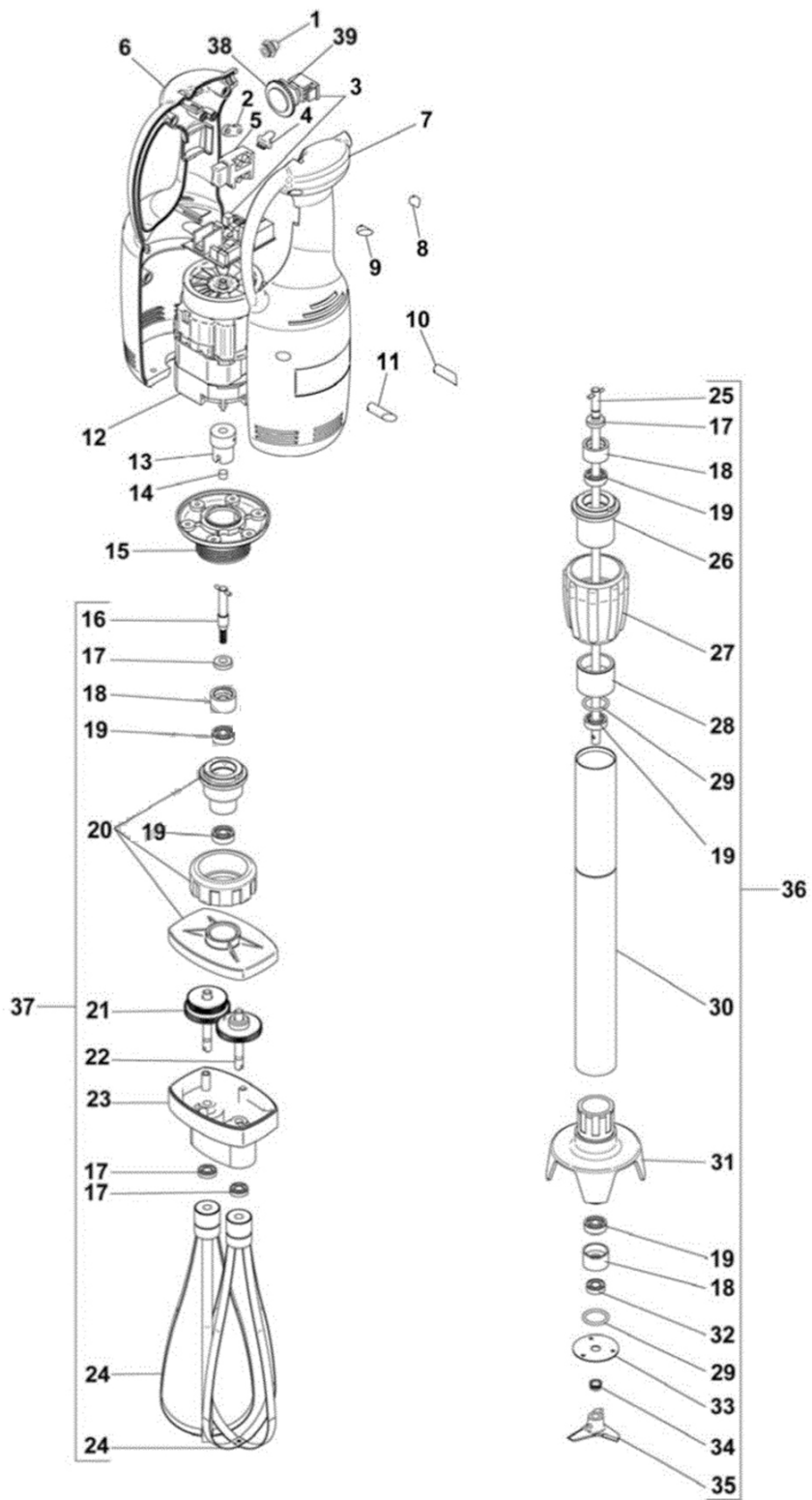
EXTENDED PERIODS OF DISUSE

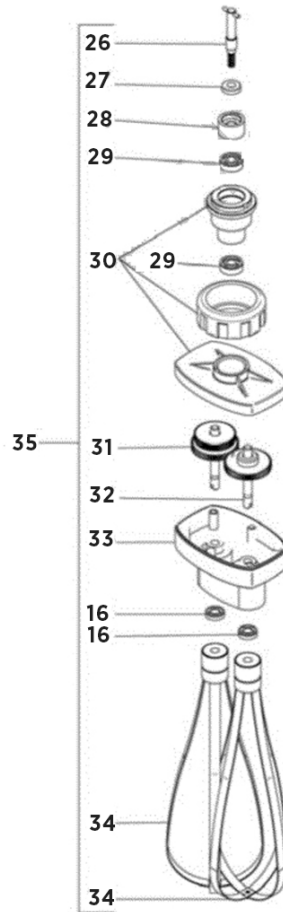
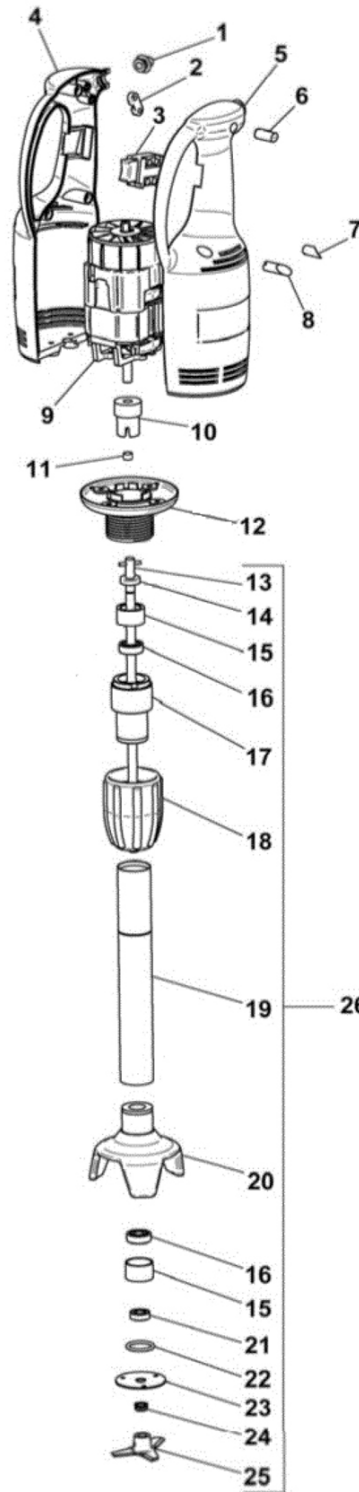
- FOR EXTENDED PERIODS OF DISUSE, UNPLUG THE UTENSIL FROM THE POWER SOCKET, CLEAN THE UTENSIL AND COVER IT WITH A CLOTH TO PROTECT IF FROM DUST.

PROBLEMS, CAUSES, SOLUTIONS

- IN CASE OF MALFUNCTION OR BREAKAGE, TURN OFF THE FUSE ON THE WALL AND CONTACT YOUR DEALER SERVICE CENTRE.
- AVOID DISASSEMBLING INTERNAL MACHINE PARTS.

PROBLEM	CAUSE	SOLUTION
THE MACHINE DOES NOT START	MAIN SWITCH OFF	TURN ON MAIN SWITCH TO "I"
	NO POWER REACHES THE MOTOR UNIT	CONTACT YOUR DEALER'S SERVICE





CONTENDER 300MM STICK BLENDER · SKU: MXH028

CONTENDER 400MM STICK BLENDER · SKU: MXH029

CONTENDER 500MM STICK BLENDER · SKU: MXH030



STEP UP TO THE PLATE